



# What We Fund

TBDSSAB funds programs that help vulnerable people live with dignity, respect, and quality of life.

The District of Thunder Bay Social Services Administration Board supports people to improve their lives and become self-sufficient. We do this as the service system manager for vital, quality social services needed by individuals and families living in the District of Thunder Bay—including child care and early years, community housing, homelessness prevention programs—and through the delivery of Ontario Works.

## Program Delivery

Programs and services at TBDSSAB are offered through a mix of direct and funded program delivery.



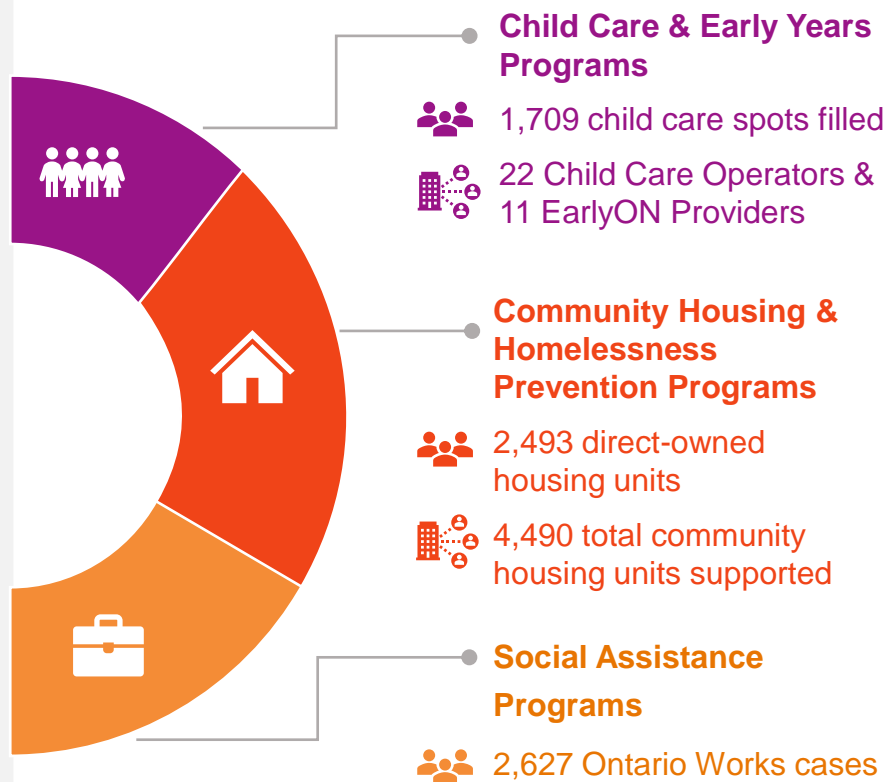
### Direct Programs

Funds transferred to individuals & families.



### Funded Programs

Funds transferred to organizations who deliver services to individuals and families in the community.



# What We Fund

December 2023

## Understanding the 2024 Budget

### Examples of Impact



#### Housing & Homelessness Programs

**48%**  
\$57,868,700

**\$16.7M** for homelessness prevention programs, including **\$9.0M** for capital projects, **\$3.0M** towards outreach, **\$1.8M** toward housing assistance programs, and **1.6M** toward Emergency Shelters  
**4,490** total community housing units supported, with 7300+ residents. Of these, **2,493** are direct-owned



#### Social Assistance Programs

**29%**  
\$34,707,400

**2,627** Ontario Works cases supporting an average of **4,582** people monthly in 2023  
**19.7%** of terminations from OW are to employment for 2023



#### Child Care & Early Years Programs

**23%**  
\$28,357,000

**\$10.5M** investment into CWELCC, resulting in **56%** average reduction to child care fees  
**\$3.9M** supporting **11** EarlyON Service Providers  
**\$2.0M** to child care fee subsidies  
**22** Licensed Child Care Operators supporting **52** program sites

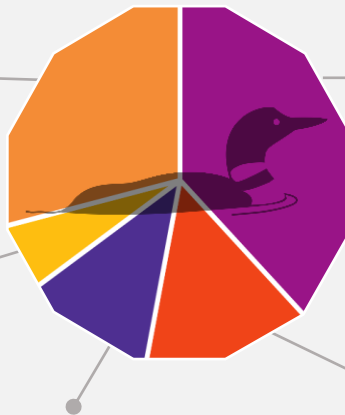
Total **\$120,747,100**

## The TBDSSAB Dollar (2024)

**29¢** for direct transfers for individuals & families

**6¢** for administration and overhead

**12¢** on direct costs of program delivery



**38¢** transferred to community partners to deliver programs

**15¢** used to operate direct-owned housing properties