



What We Fund

TBDSSAB funds programs that help vulnerable people live with dignity, respect, and quality of life.

The District of Thunder Bay Social Services Administration Board supports people to improve their lives and become self-sufficient. We do this as the service system manager for vital, quality social services needed by individuals and families living in the District of Thunder Bay—including child care and early years, community housing, homelessness prevention programs—and through the delivery of Ontario Works.

Program Delivery

Programs and services at TBDSSAB are offered through a mix of direct and funded program delivery.



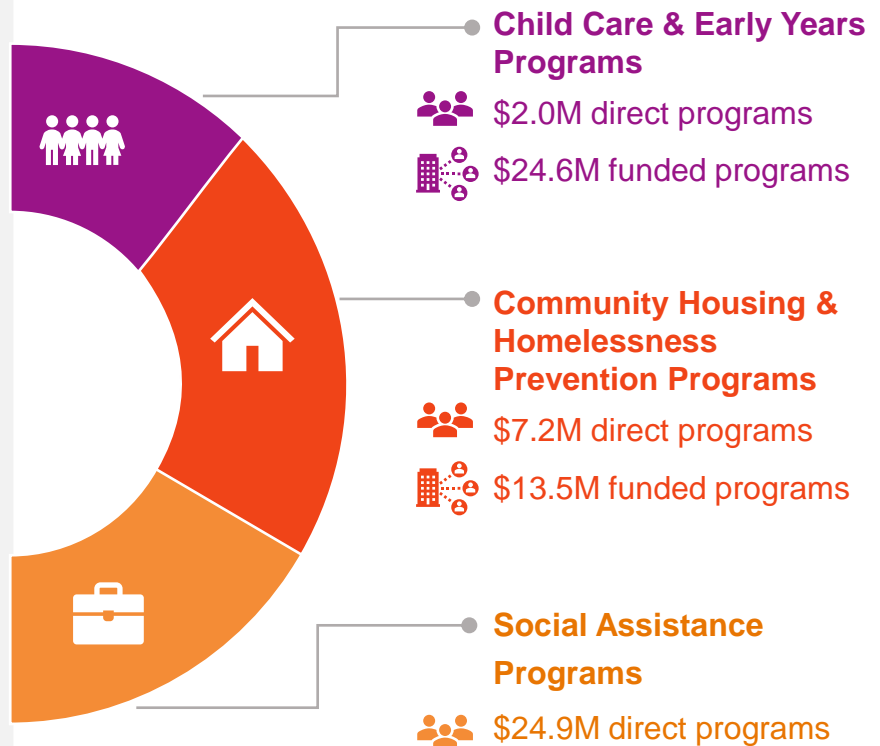
Direct Programs

Funds transferred to individuals & families.



Funded Programs

Funds transferred to organizations who deliver services to individuals and families in the community.



What We Fund

February 2023

Understanding the 2023 Budget

Examples of Impact



Child Care & Early Years Programs

25%
\$27,876,200

\$2.0M to child care fee subsidies
\$9.4M investment into CWELCC, resulting in
56% average reduction to child care fees
22 Licensed Child Care Operators supporting
52 program sites
\$3.8M supporting **11** EarlyON Service Providers



Community Housing & Homelessness Programs

44%
\$49,365,300

4,490 total community housing units supported,
with 7000+ residents. Of these, **2,493**
are direct-owned
\$5.8M for homelessness prevention programs,
including **\$1.1M** toward Emergency
Shelters, **\$2.6M** toward outreach, and
\$1.5M for housing assistance programs



Social Assistance Programs

31%
\$34,584,200

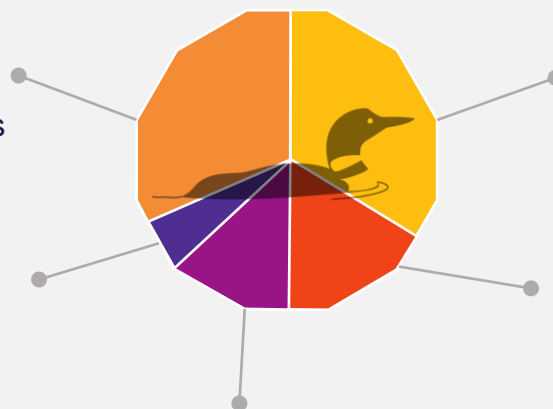
2,596 Ontario Works cases supporting an
average of **4,555** people in 2022
17 Employer partners through the 'Going to
Work' employer incentives program

Total **\$111,446,300**

The TBDSSAB Dollar

31¢ for direct transfers for individuals & families

6¢ for administration and overhead



34¢ transferred to community partners to deliver programs

16¢ used to operate direct-owned housing properties

13¢ spent on direct costs of program delivery