



TBDSSAB Quarterly Operational Report

Report No. 2021-21

TBDSSAB 1st Quarter Operational Report

Table of Contents

Social Housing

- ❖ Waitlist and Housed Statistics 3
- ❖ Applicant Data 4
- ❖ New Tenant Data 5
- ❖ Shelter Use and Chronic Homelessness 6

Ontario Works

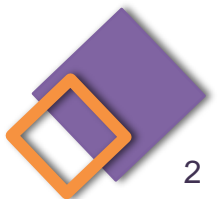
- ❖ Caseload Statistics 7
- ❖ Employment Assistance Services 8

Child Care

- ❖ Waitlist by Age Category 10
- ❖ Waitlist Trends 11
- ❖ Current Usage Statistics 12

Early Years Programs

- ❖ EarlyON 13



Social Housing: Waitlist and Housed Statistics

Total Applicants on Waitlist	819
Special Priority Program (SPP)	16
Exceptional – High Needs Homeless	68
Exceptional – Other	19
Chronological	716

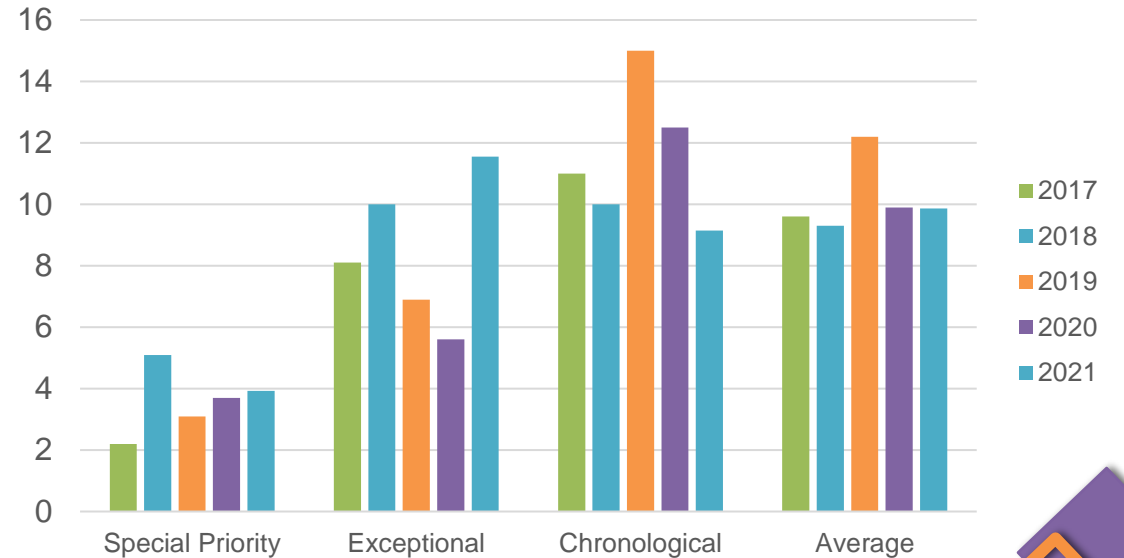
2021 Year to Date Average Time on Waitlist since Application

	Months
Special Priority Program	3.9
Exceptional	11.5
Chronological	9.1
Average	9.9

Total and Chronological Waitlist Trends ¹

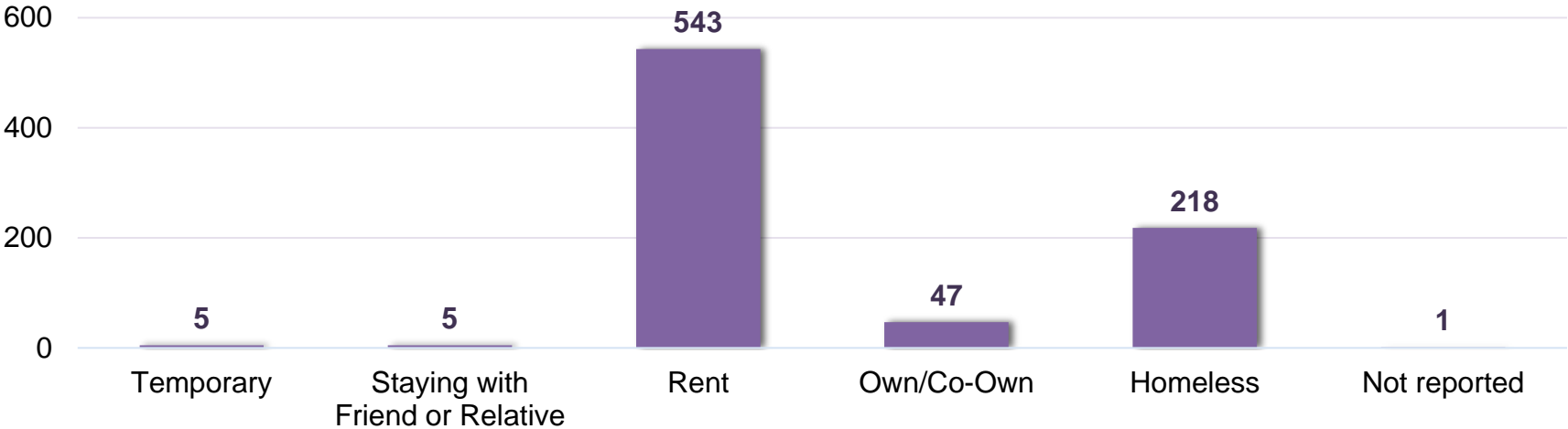


Average Time on Waitlist Year over Year in Months

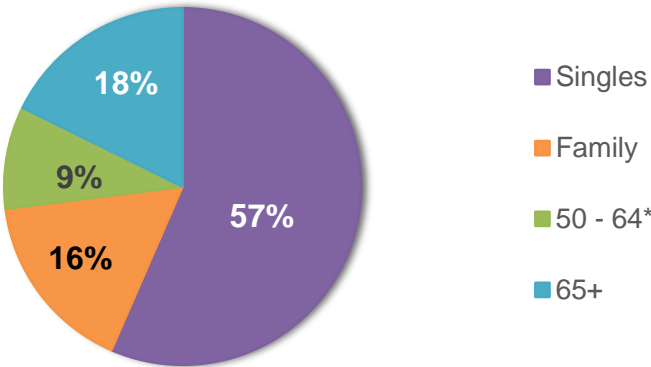


Social Housing: Applicant Data

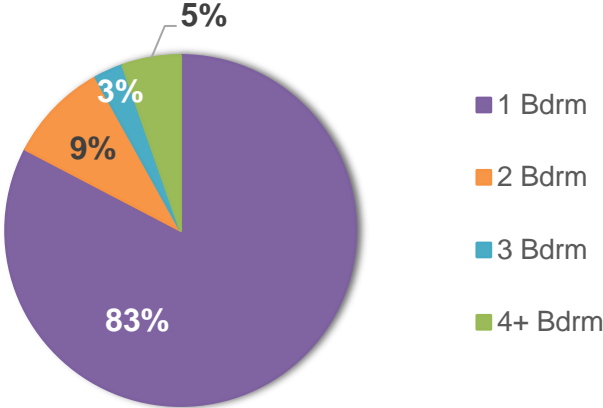
Current Housing Status of Applicants, as of end of Q1



Household Type Demand, as of end of Q1



Unit Type Demand, as of end of Q1

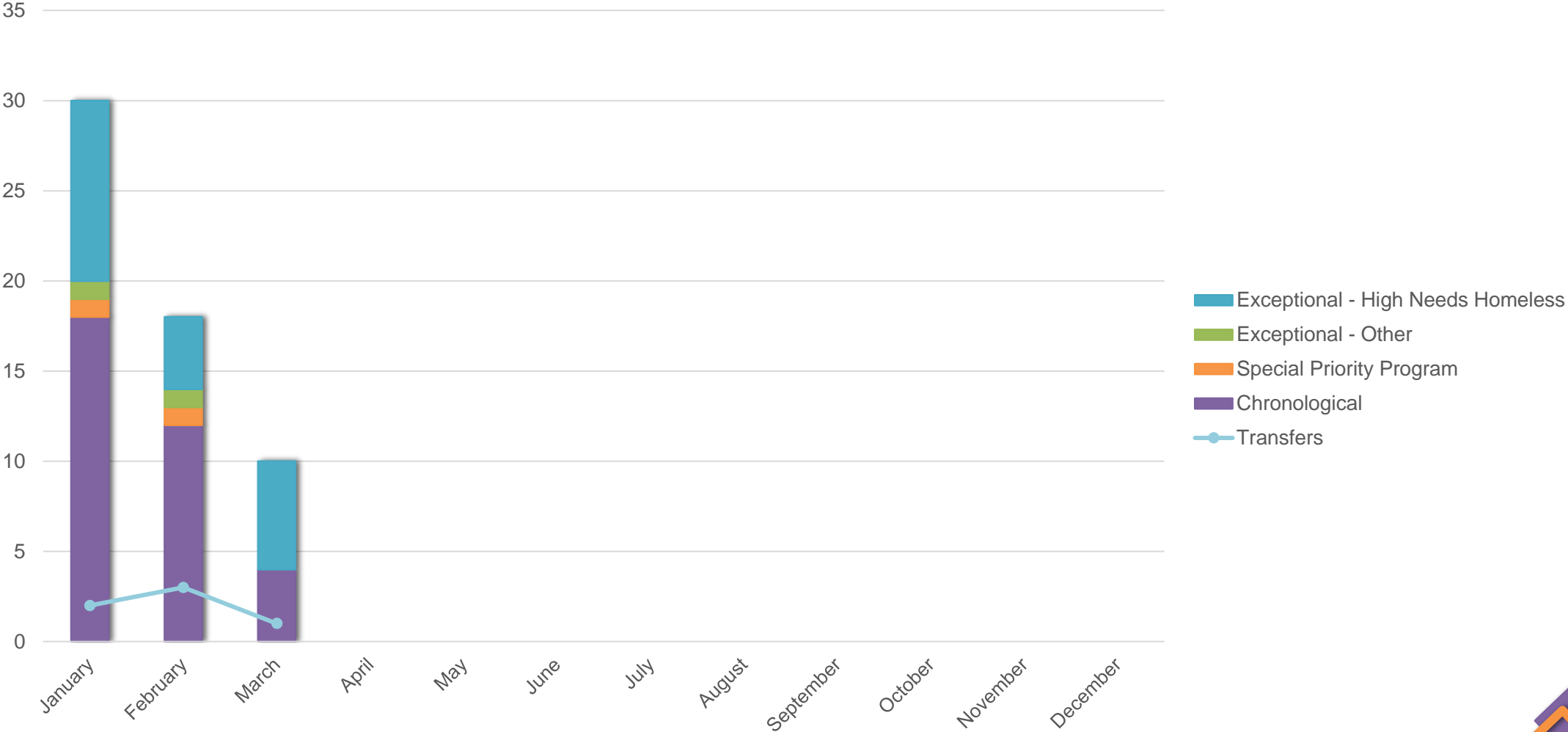


* Includes applicants 50-64 who applied for Senior units, and special BISNO project with McKellar Place



Social Housing: Applicants Housed

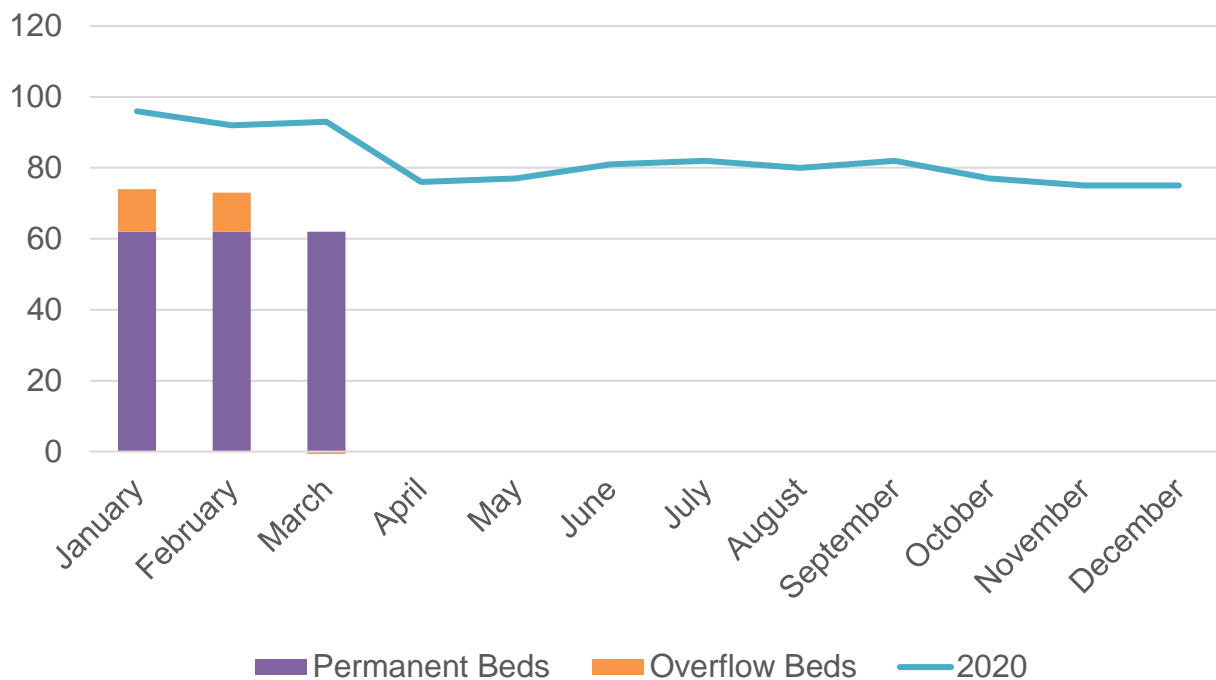
Housed by Application Type



Shelter Use and Chronic Homelessness

[Back to Table of Contents](#)

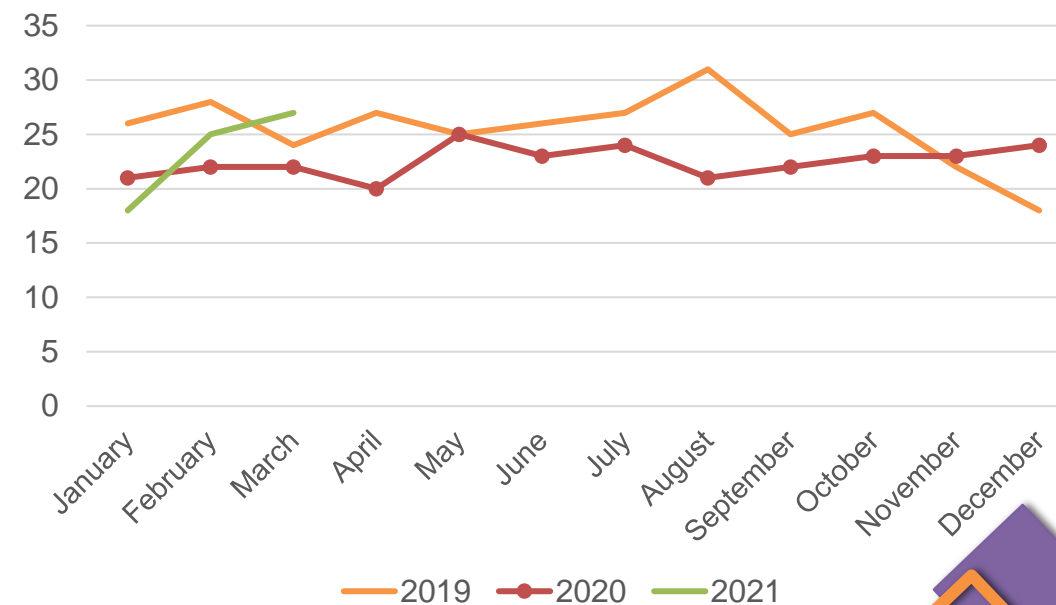
Average Daily Emergency Shelter Usage - Beds



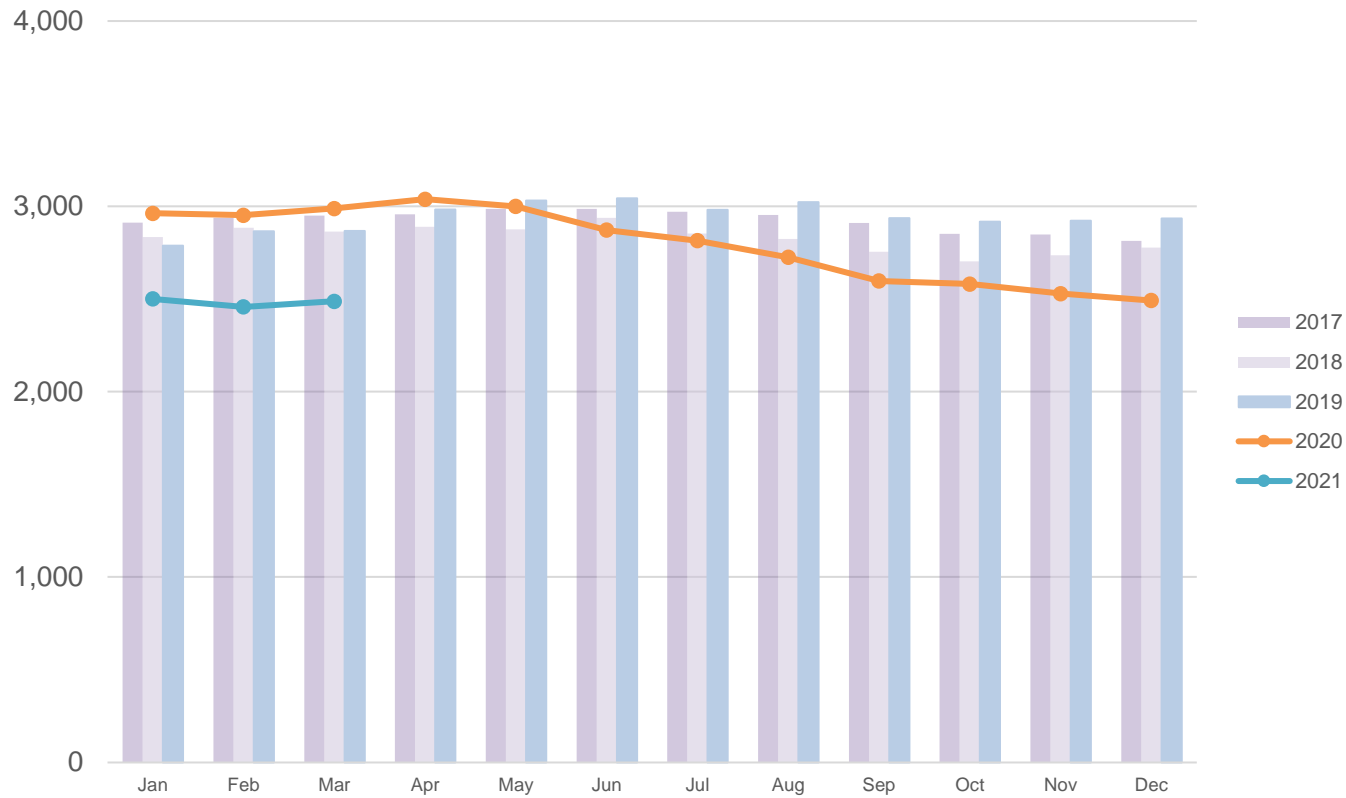
	Daily Average Number of Isolation Shelter Rooms	Daily Average Number of Overflow Shelter Rooms
January	13.2	2.8
February	60.8	8.3
March	66.0	10.0*

	Q1	Year to Date
Total Housed on Transitional Outreach Support Caseload	11	11
Initial SPDATs Administered	26	26
Follow Up SPDAT assessments	6	6

Number of People Experiencing Chronic Homelessness Using Shelters by Month



OW Caseload ¹



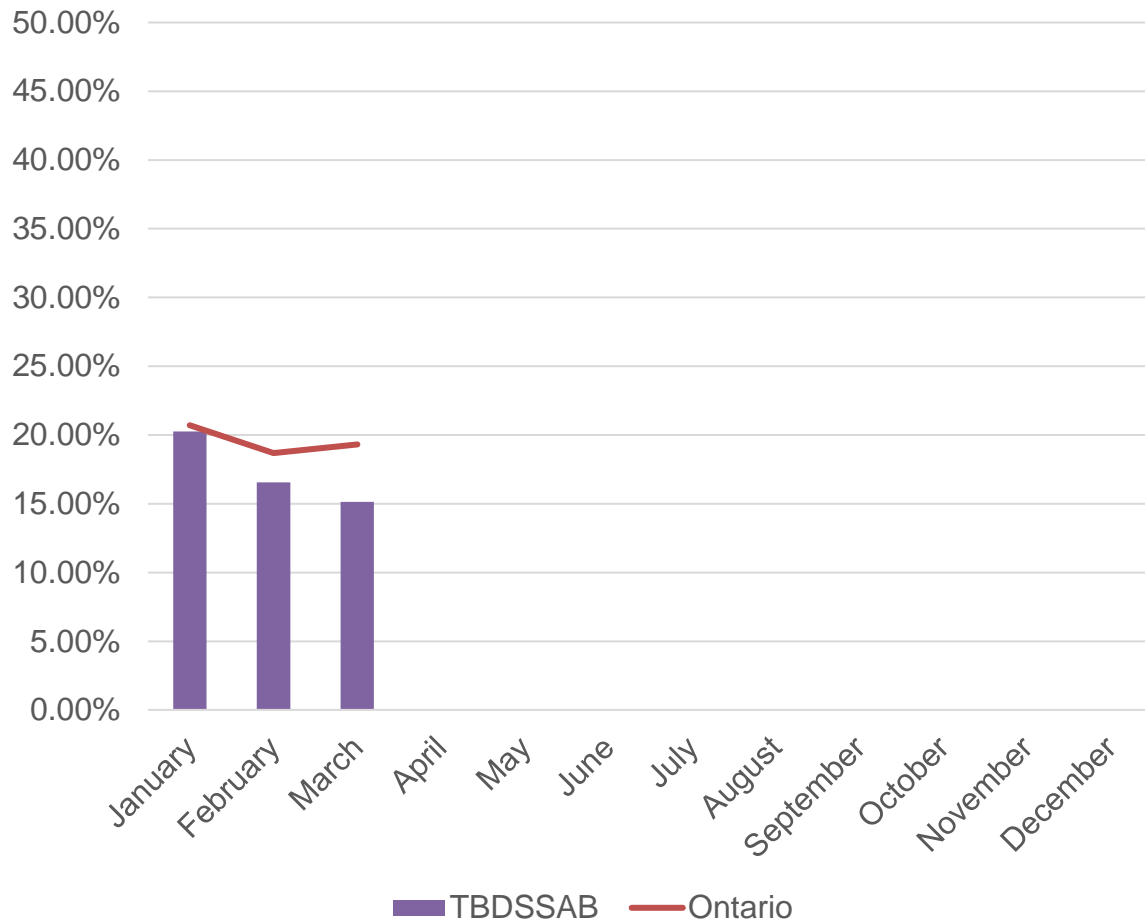
OW Caseload ¹	2,488
--------------------------	--------------

	Number of Cases
Temp Care Cases	2,488
ODSP Participating	77

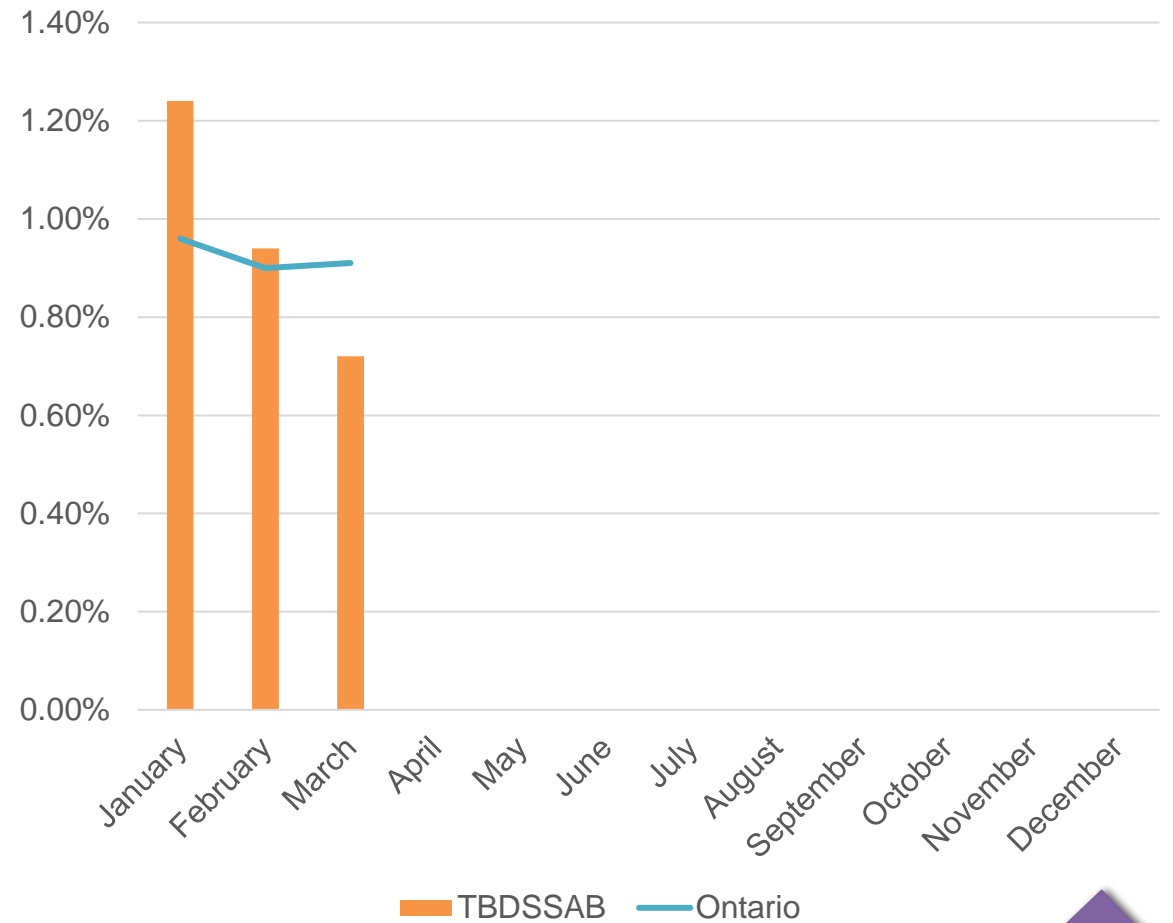


Ontario Works: Employment Assistance Services

% of Terminations Exiting to Employment*

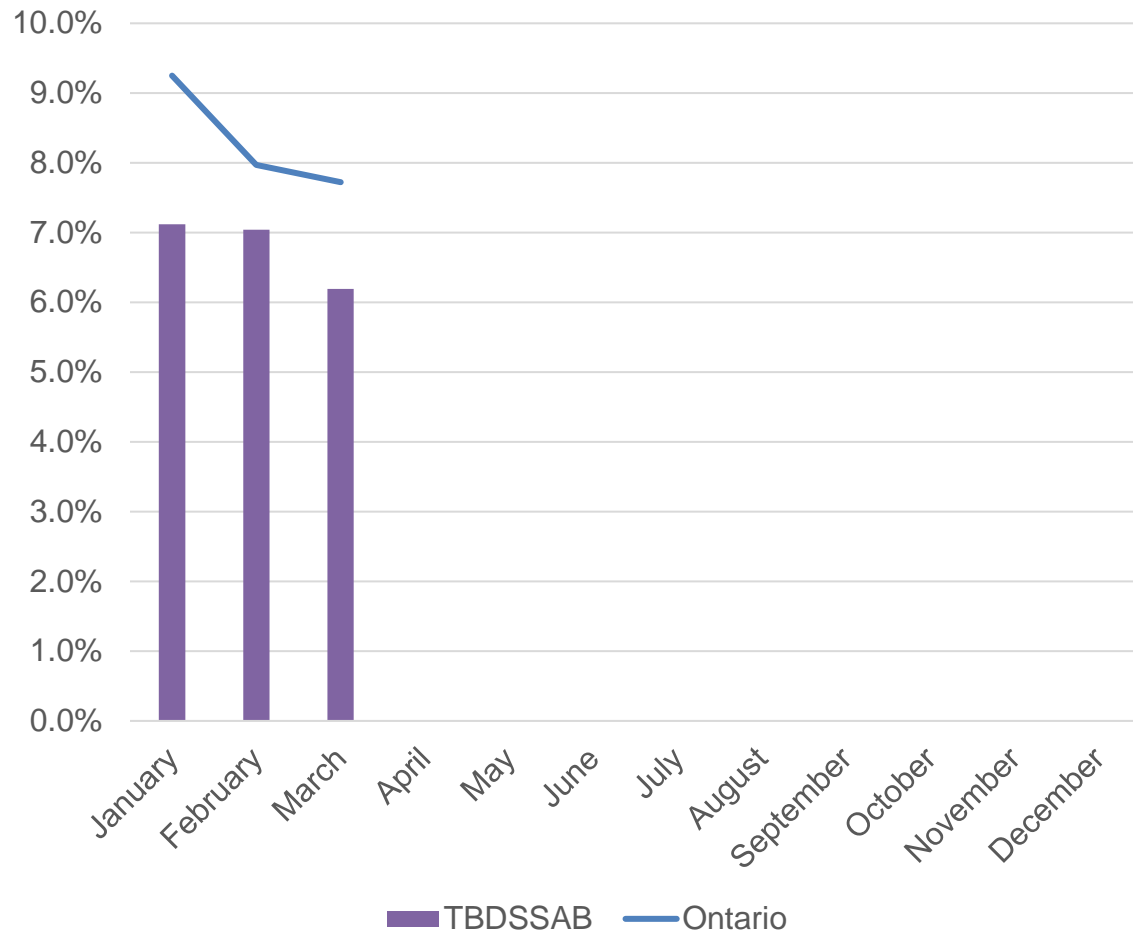


% of Caseload Exiting to Employment

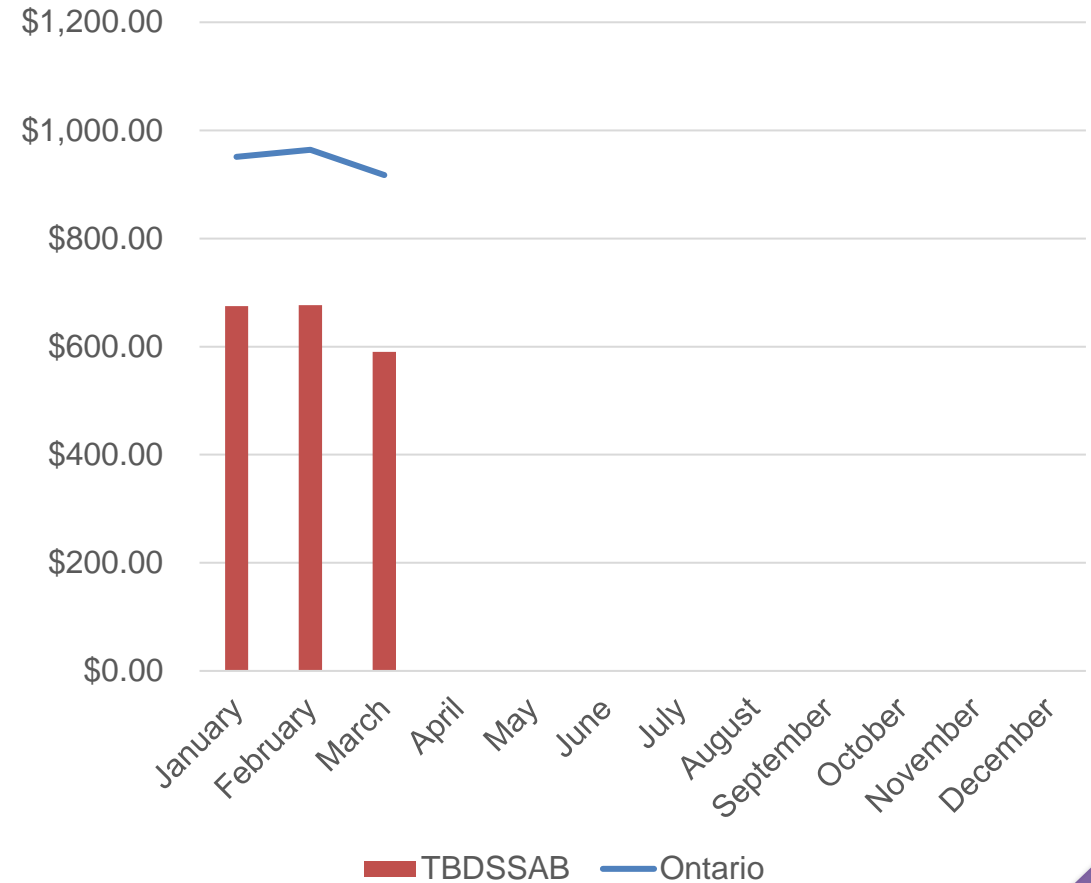


Ontario Works: Employment Assistance Services

% Caseload with Employment Earnings



Average Monthly Employment Earnings by Case

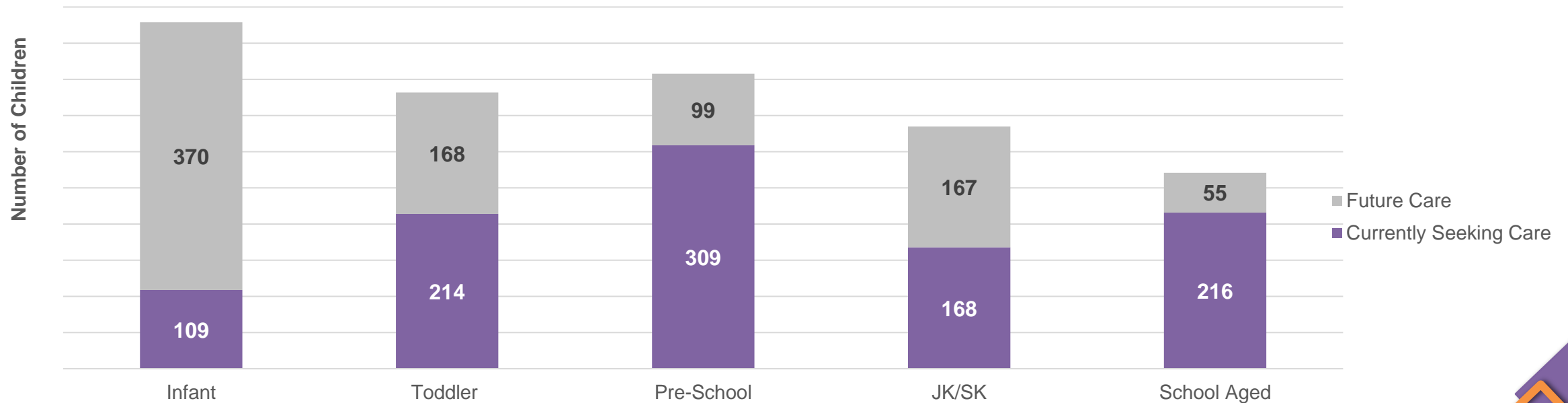


Child Care: Waitlist by Age Category

Number of Families Applying for Fee Subsidy*	618	Number of Families for a Full Pay Space	1,257
Number of Families Applying Special Needs Services*	85	Number of Placed Children Q1	41

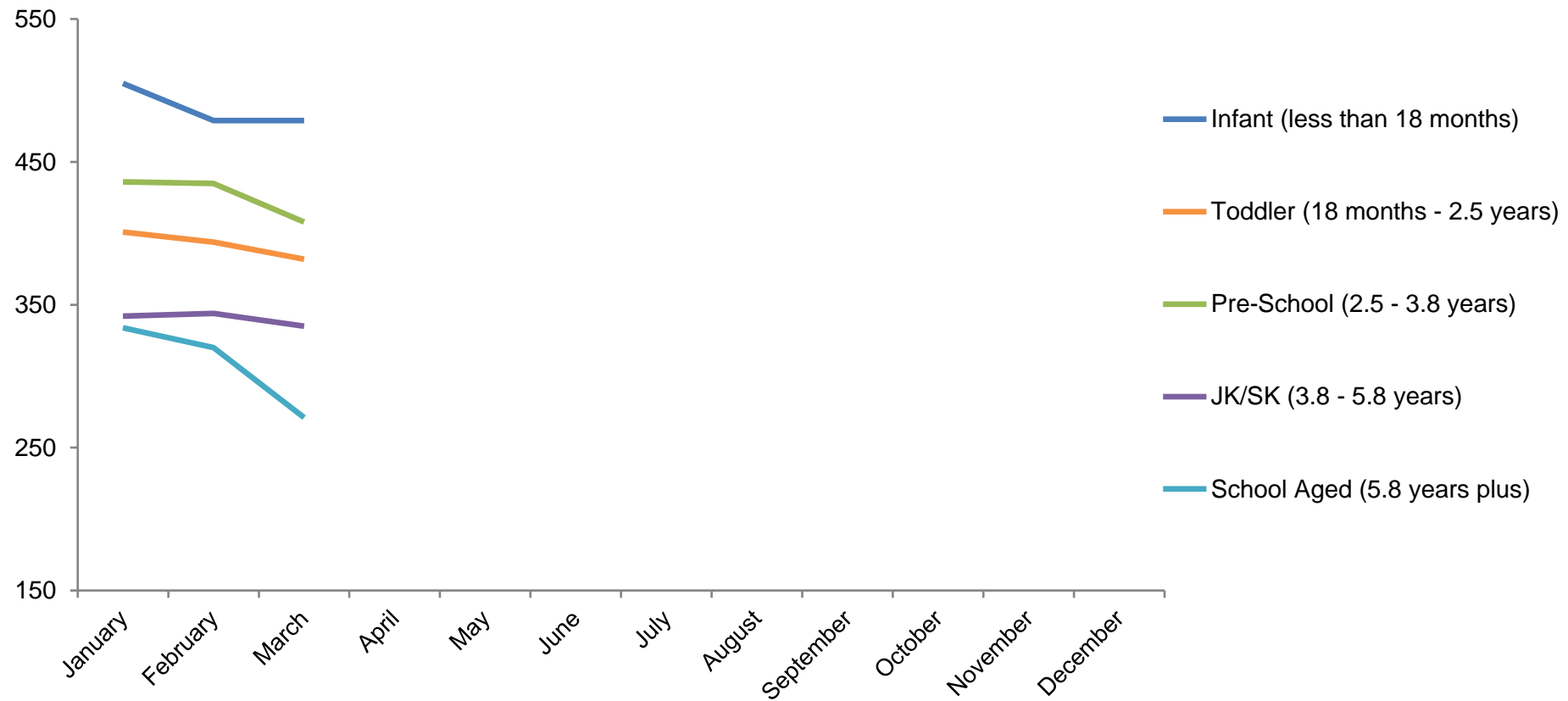
*Note – applications are subject to eligibility review.

**Total Child Care Waitlist and Children Currently Waiting for Care
(Individual/Unique Children)**



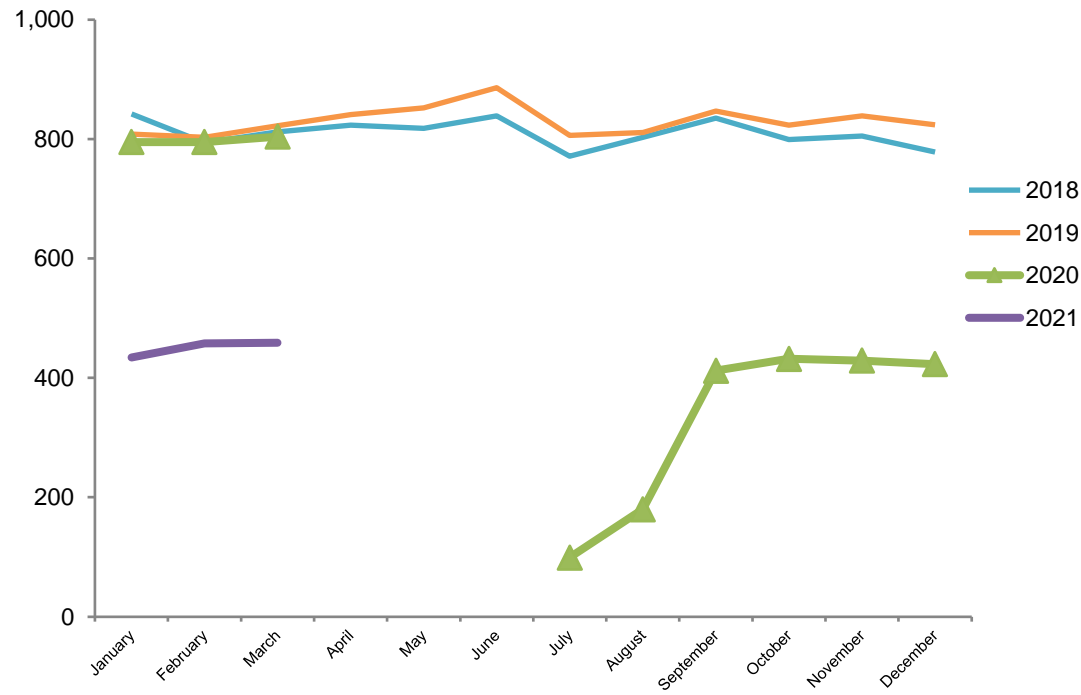
Total Waitlist as of end of Q1 2021 1,875 Percent of Waitlist Currently Seeking Care as of end of Q1 2021 54%

Total Waitlist Trends by Program: 2021

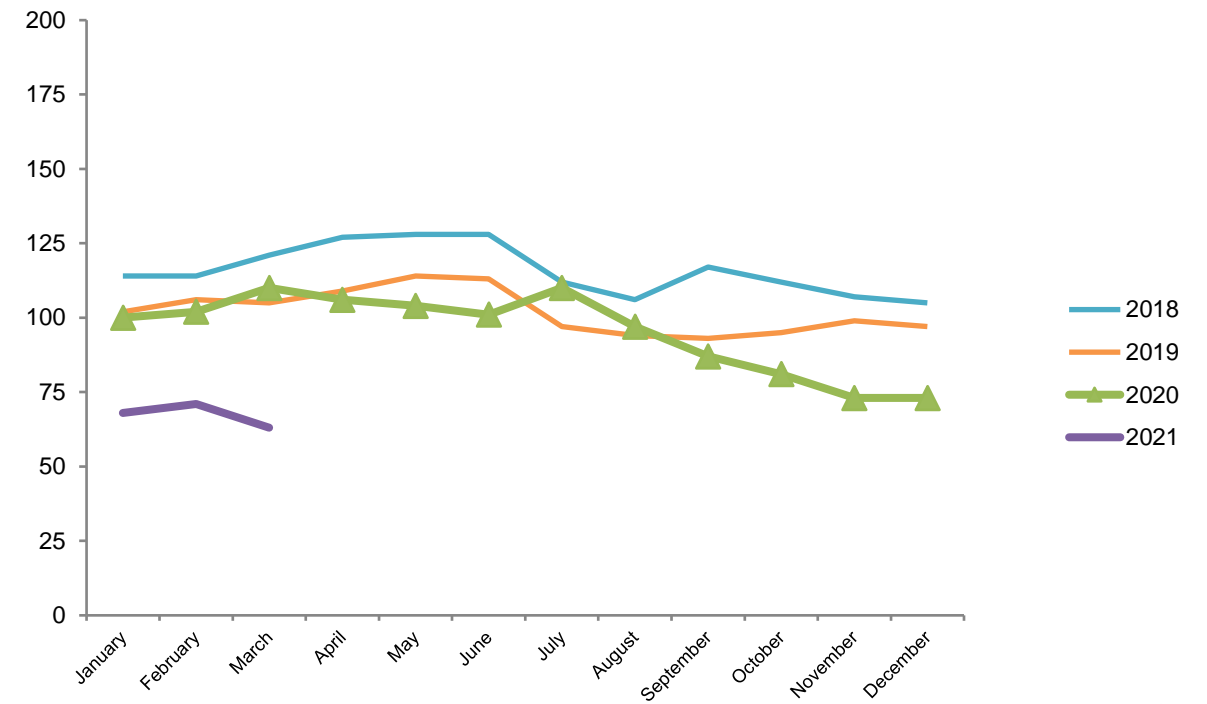


Child Care: Current Usage Statistics

Children Receiving Fee Subsidy

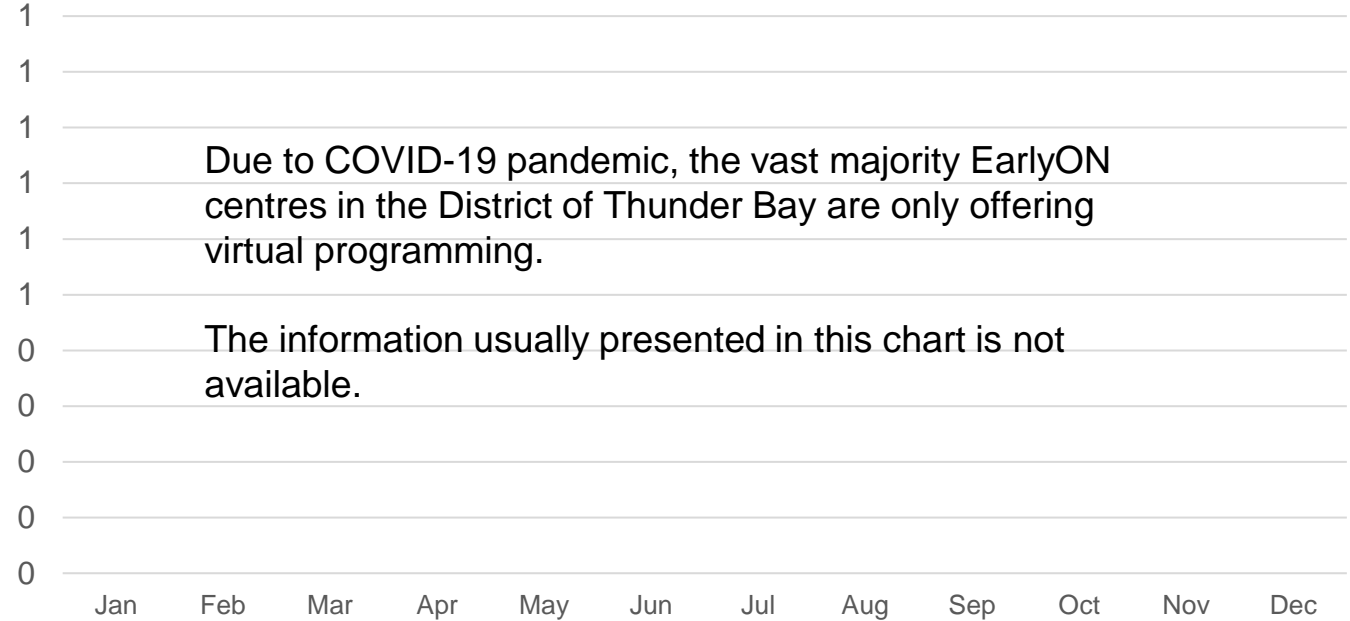


Children Receiving Special Needs Services



Early Years Programs: EarlyON

Children and Parents Who Attended an EarlyON Centre in the District of Thunder Bay



■ Children
 ■ Parents/Caregivers
 ● Unique Children YTD
 ○ Unique Parents/Caregivers YTD

Services and Programs Provided to meet clients needs during COVID-19 pandemic closure

of Virtual Programs offered in Q1 460

of Contactless Delivery of Learn at Home Kits in Q1 1150

