



# TBDSSAB Quarterly Operational Report

Report No. 2021-04

TBDSSAB 4<sup>th</sup> Quarter Operational Report

# Table of Contents

## **Social Housing**

- ❖ Waitlist and Housed Statistics 3
- ❖ Applicant Data 4
- ❖ New Tenant Data 5
- ❖ Shelter Use and Chronic Homelessness 6

## **Ontario Works**

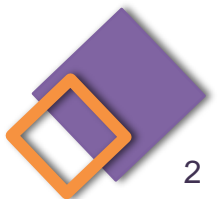
- ❖ Caseload Statistics 7
- ❖ Employment Assistance Services 8

## **Child Care**

- ❖ Waitlist by Age Category 10
- ❖ Waitlist Trends 11
- ❖ Current Usage Statistics 12

## **Early Years Programs**

- ❖ EarlyON 13



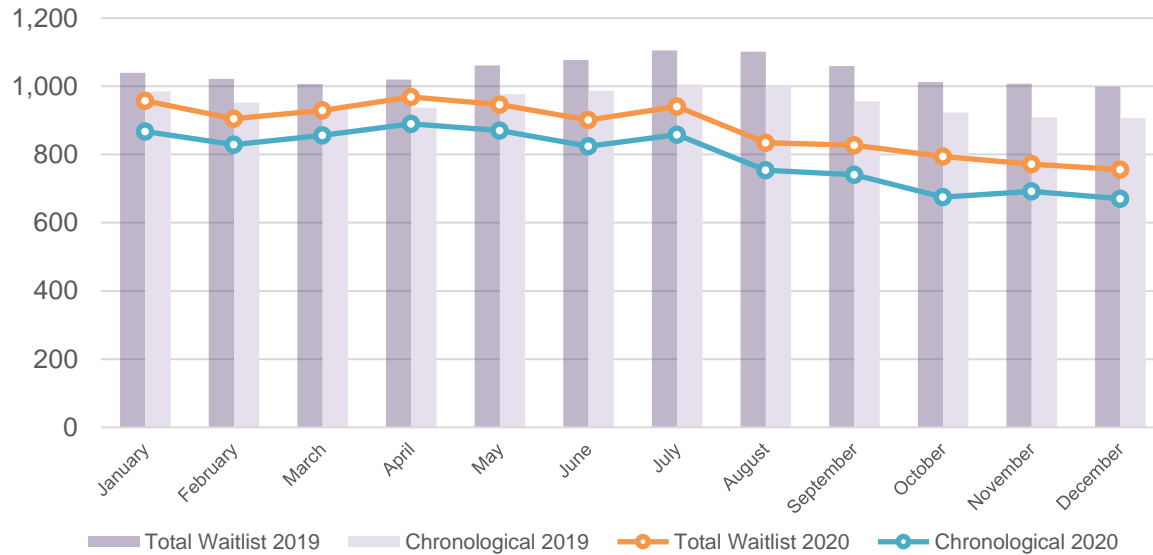
# Social Housing: Waitlist and Housed Statistics

<b>Total Applicants on Waitlist</b>	<b>756</b>
Special Priority Program (SPP)	14
Exceptional – High Needs Homeless	55
Exceptional – Other	17
Chronological	670

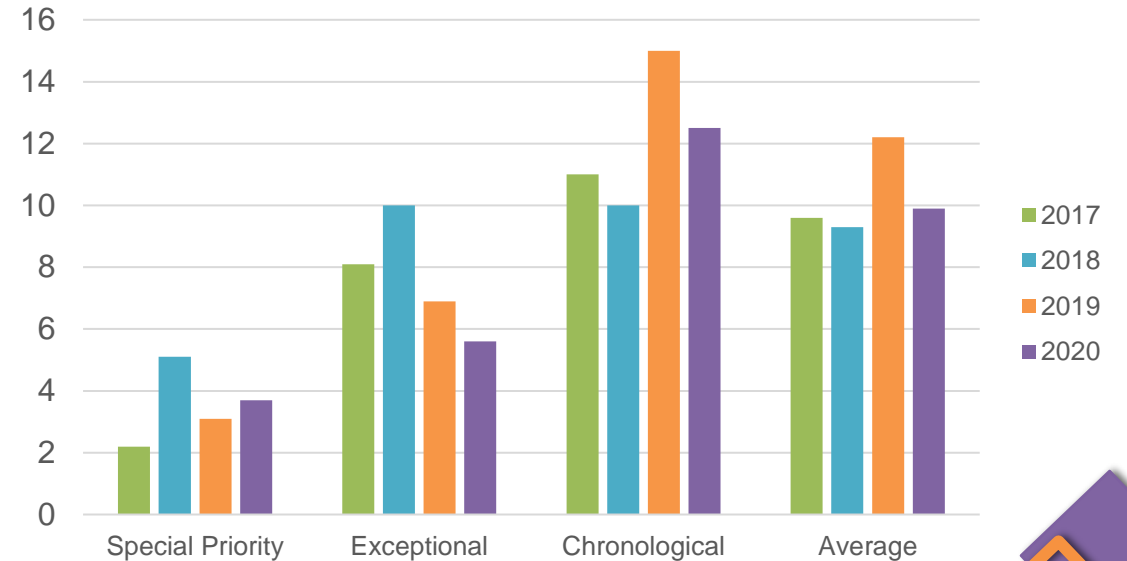
## 2020 Year to Date Average Time on Waitlist since Application

	<b>Months</b>
Special Priority Program	3.7
Exceptional	5.6
Chronological	12.5
Average	9.9

**Total and Chronological Waitlist Trends <sup>1</sup>**

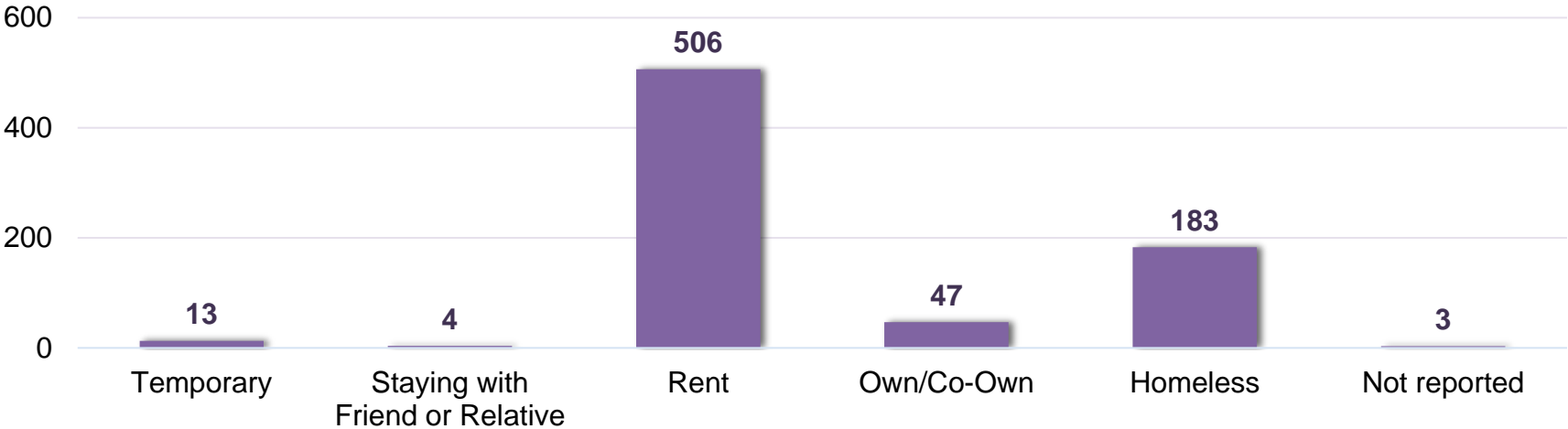


**Average Time on Waitlist Year over Year in Months**

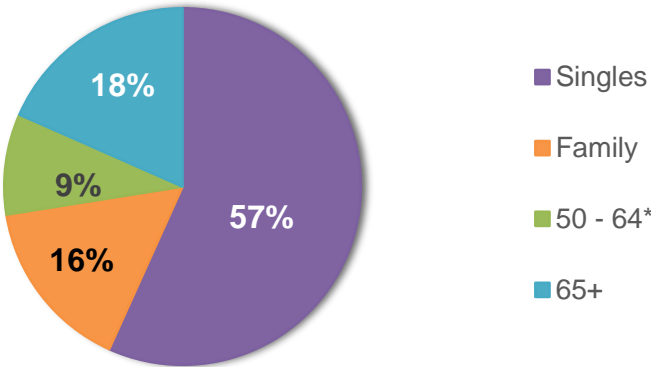


# Social Housing: Applicant Data

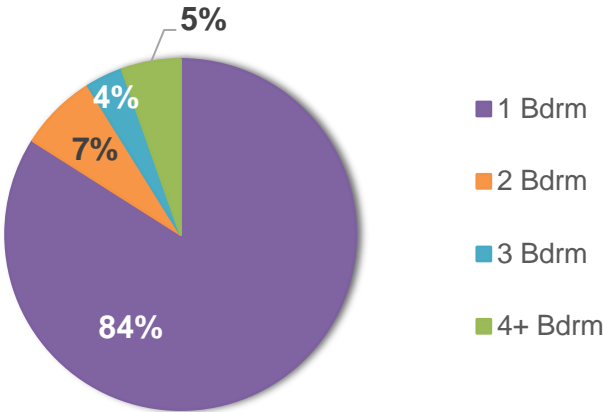
### Current Housing Status of Applicants, as of end of Q4



### Household Type Demand, as of end of Q4



### Unit Type Demand, as of end of Q4

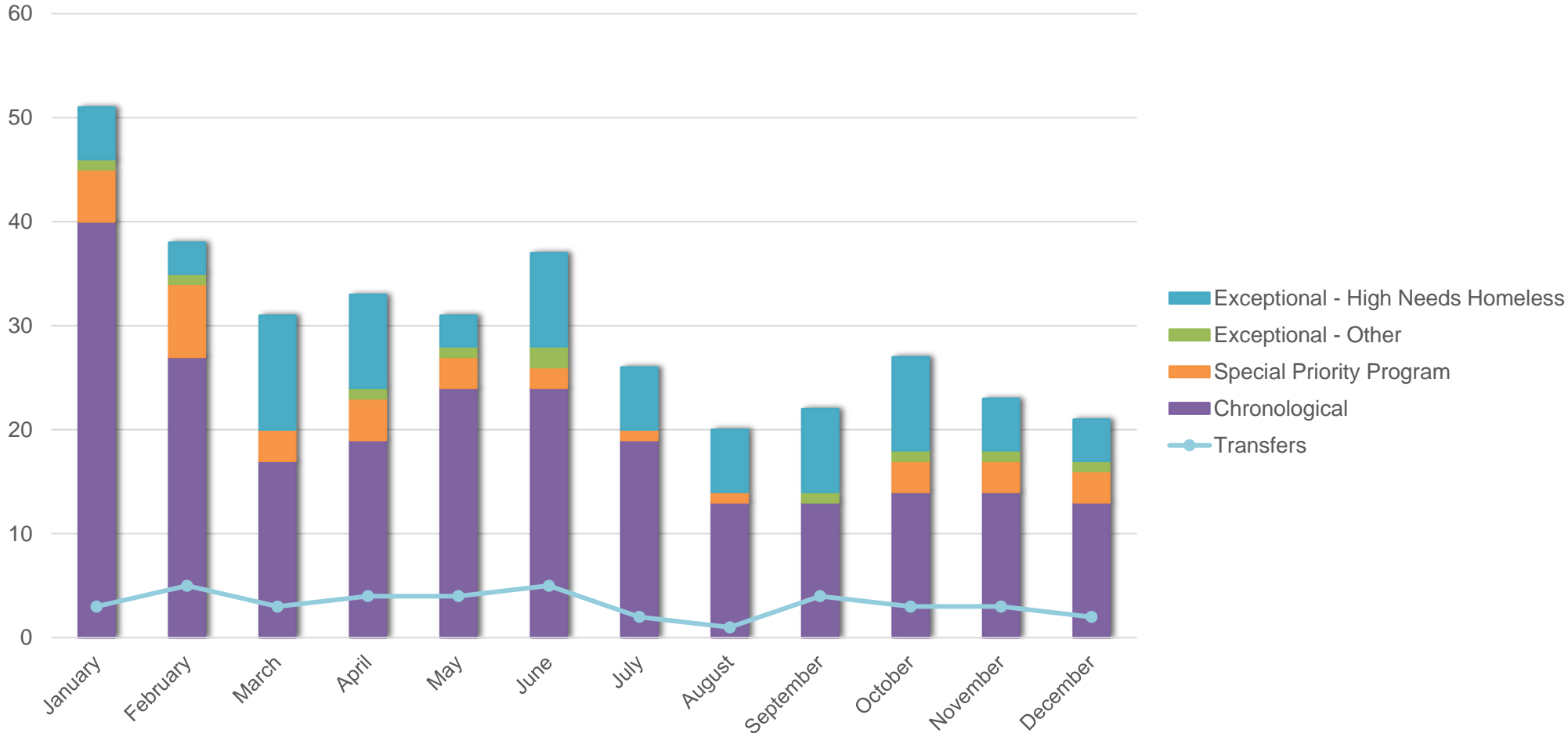


\* Includes applicants 50-64 who applied for Senior units, and special BISNO project with McKellar Place



# Social Housing: Applicants Housed

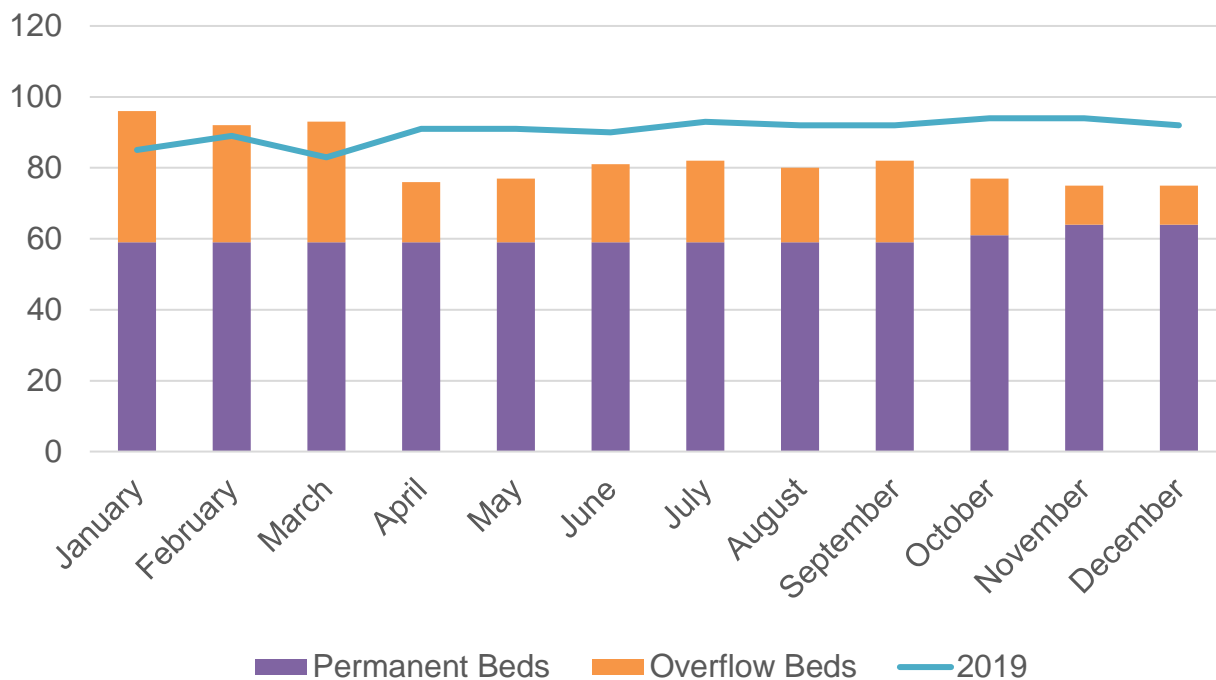
Housed by Application Type



# Shelter Use and Chronic Homelessness

[Back to Table of Contents](#)

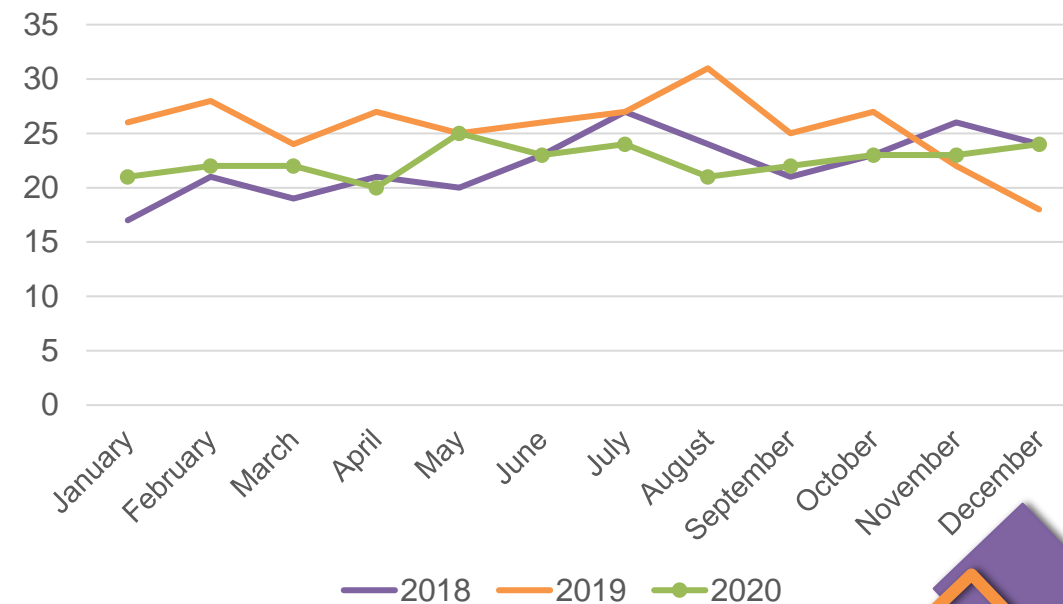
Average Daily Shelter Usage - Beds



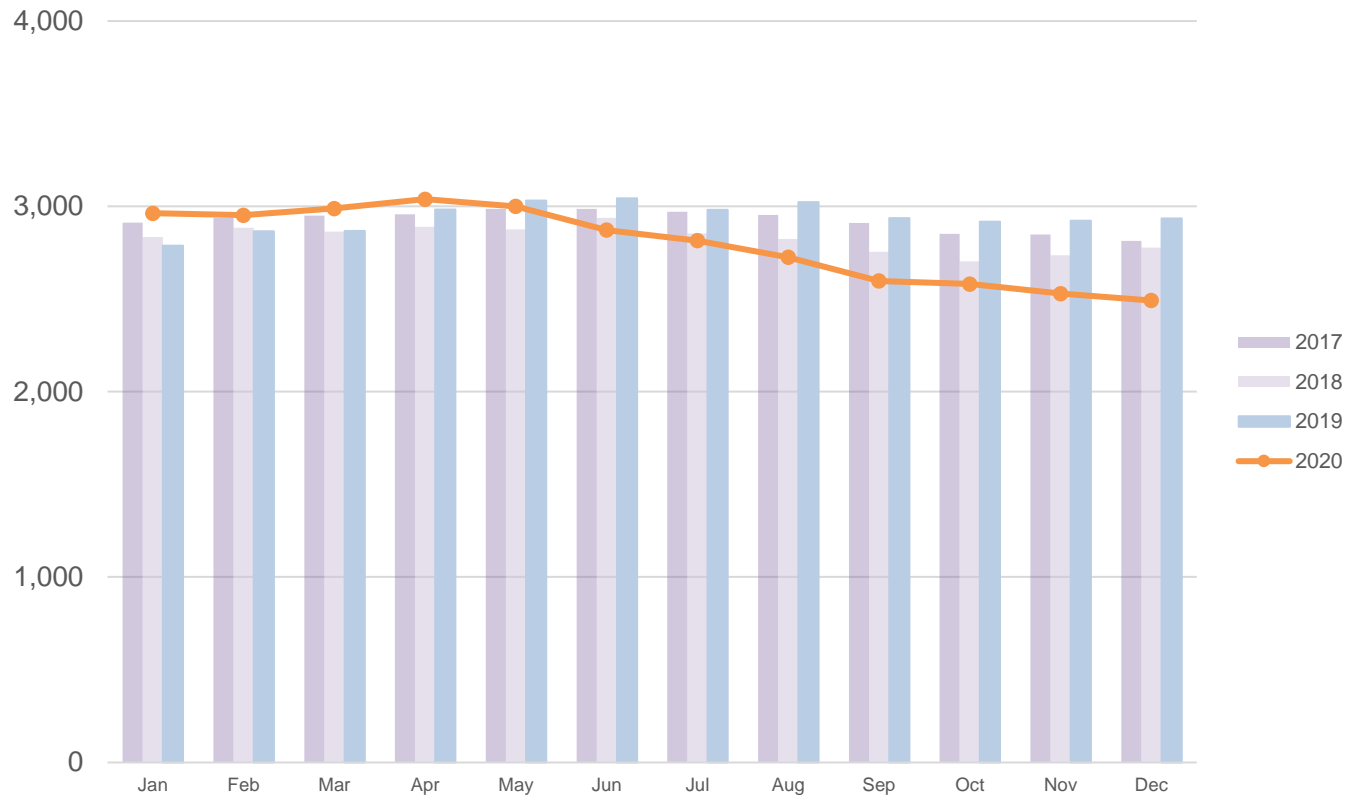
	Daily Average Number of Isolation Shelter Rooms	Daily Average Number of Overflow Shelter Rooms
October	12.0	1.7
November	14.1	1.1
December	9.9	1.5

	Q4	Year to Date
<b>Total Housed on Transitional Outreach Support Caseload</b>	<b>17</b>	<b>89</b>
Initial SPDATs Administered	17	87
Follow Up SPDAT assessments	9	34

Number of People Experiencing Chronic Homelessness Using Shelters by Month



OW Caseload <sup>1</sup>



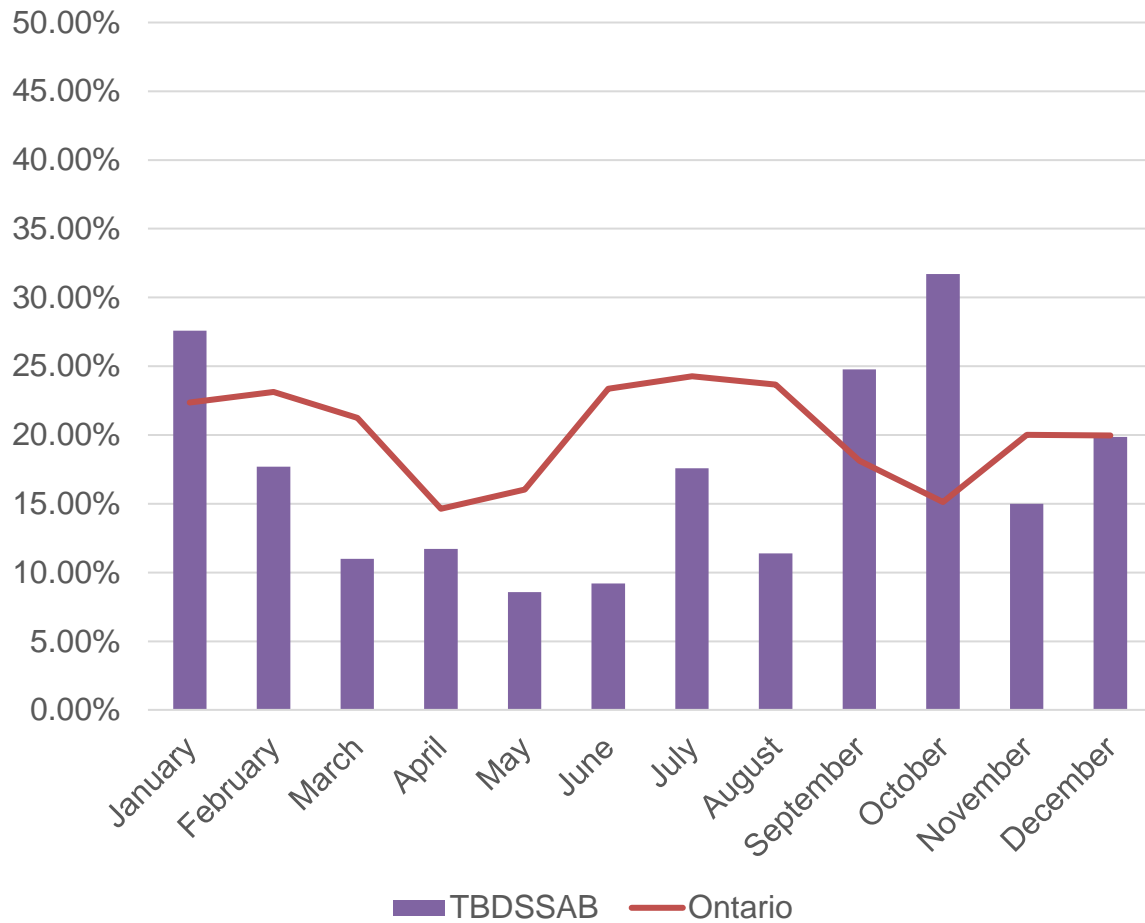
OW Caseload <sup>1</sup> **2,492**

	Number of Cases
Temp Care Cases	218
ODSP Participating	58

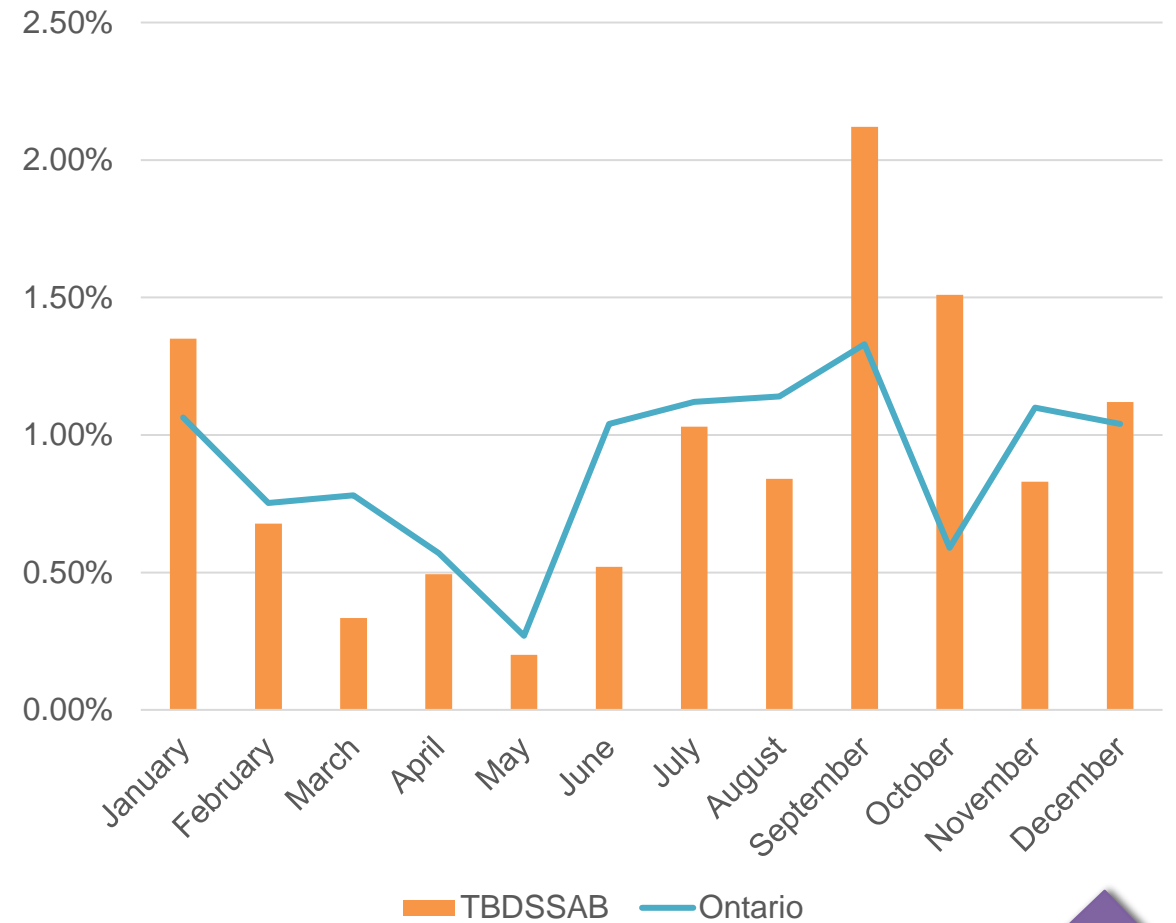


# Ontario Works: Employment Assistance Services

## % of Terminations Exiting to Employment\*



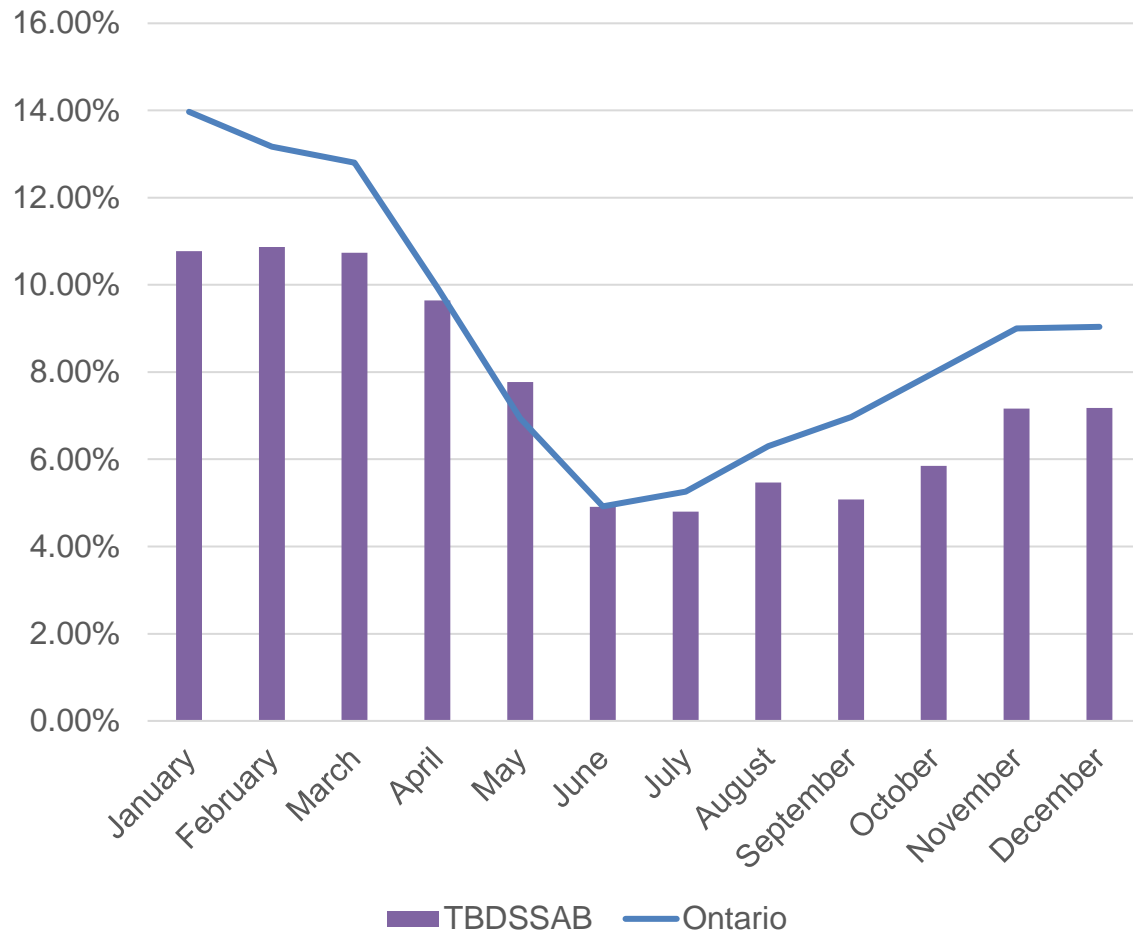
## % of Caseload Exiting to Employment



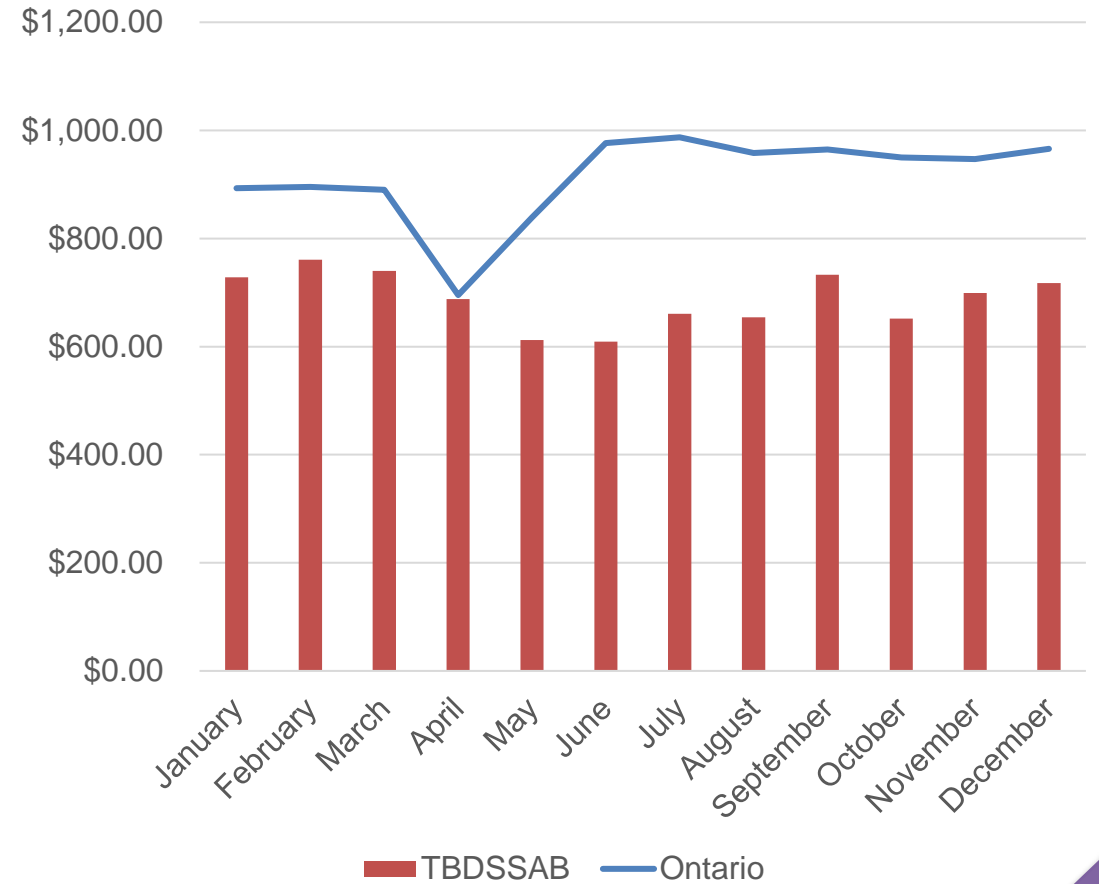


# Ontario Works: Employment Assistance Services

### % Caseload with Employment Earning



### Average Monthly Employment Earnings by Case

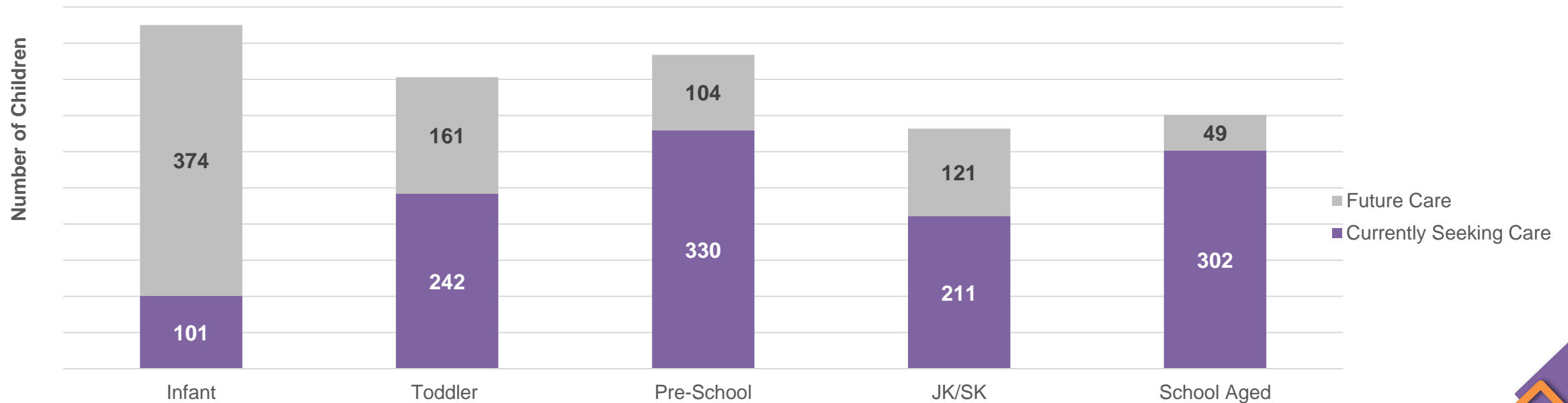


# Child Care: Waitlist by Age Category

Number of Families Applying for Fee Subsidy*	660	Number of Families for a Full Pay Space	1,335
Number of Families Applying Special Needs Services*	83	Number of Placed Children Q4	38

\*Note – applications are subject to eligibility review.

**Total Child Care Waitlist and Children Currently Waiting for Care  
(Individual/Unique Children)**

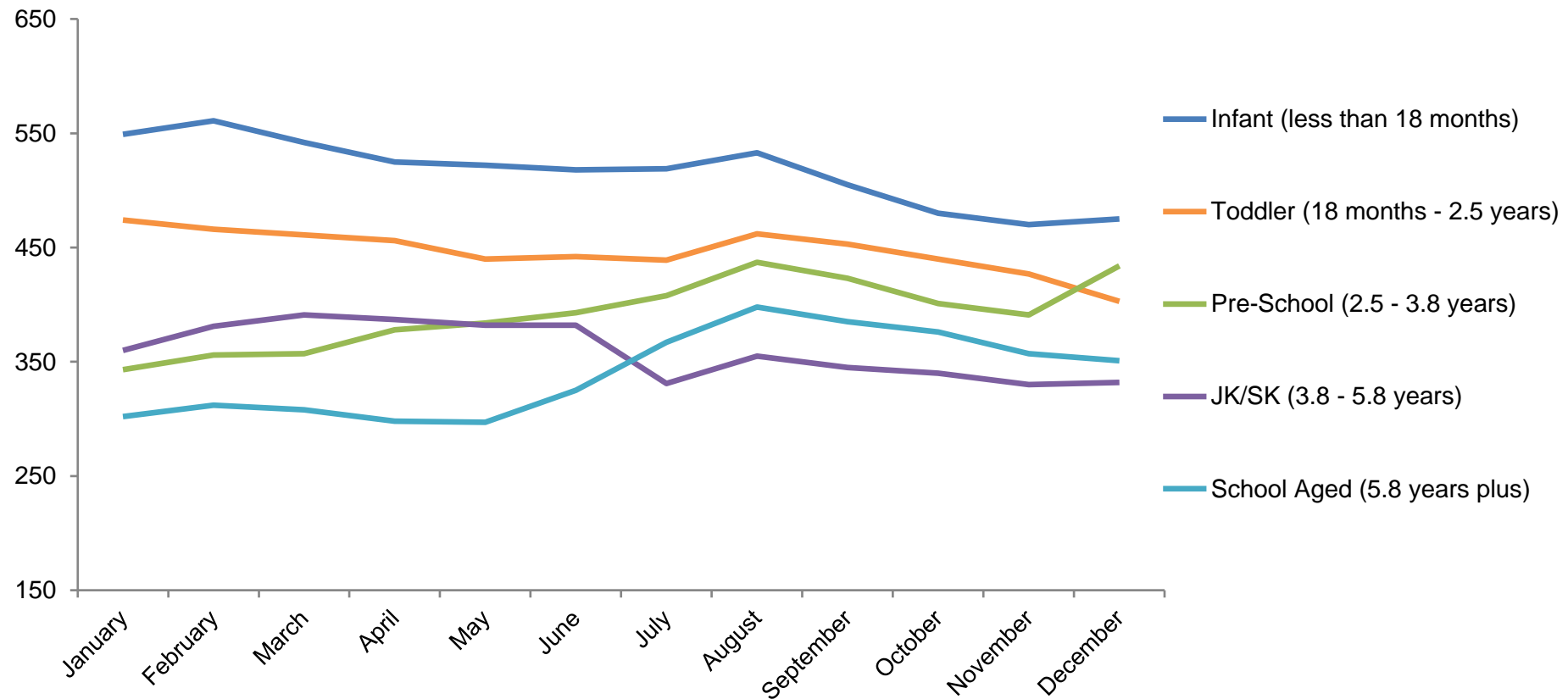


---

Total Waitlist as of end of Q4 2020    1,995    Percent of Waitlist Currently Seeking Care as of end of Q4 2020    59%

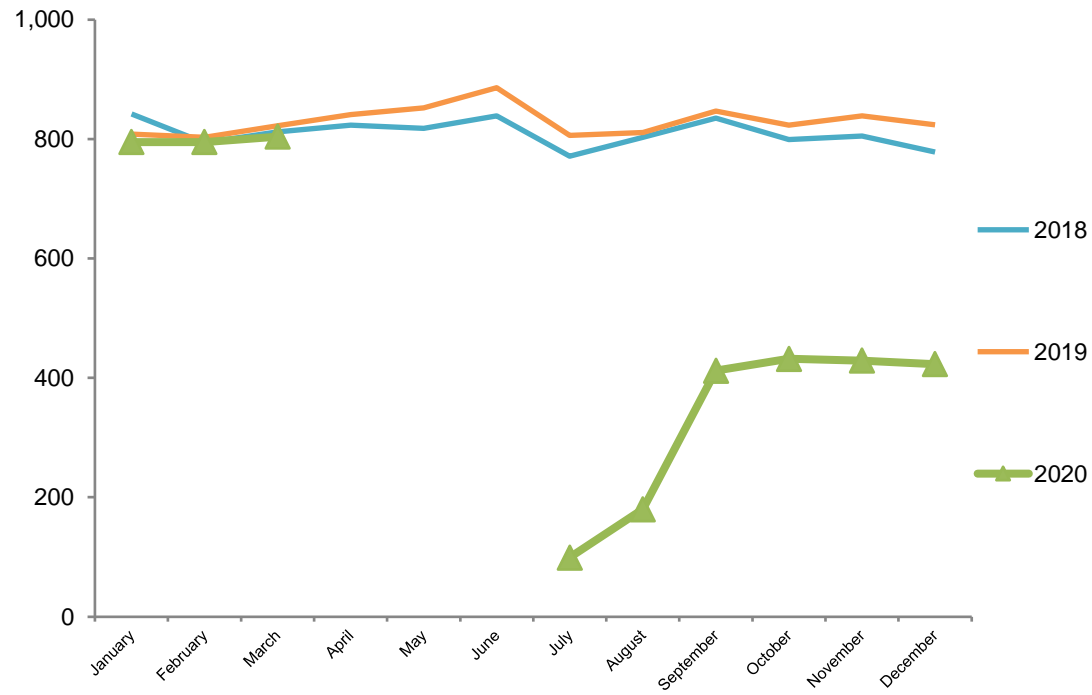
---

**Total Waitlist Trends by Program: 2020**

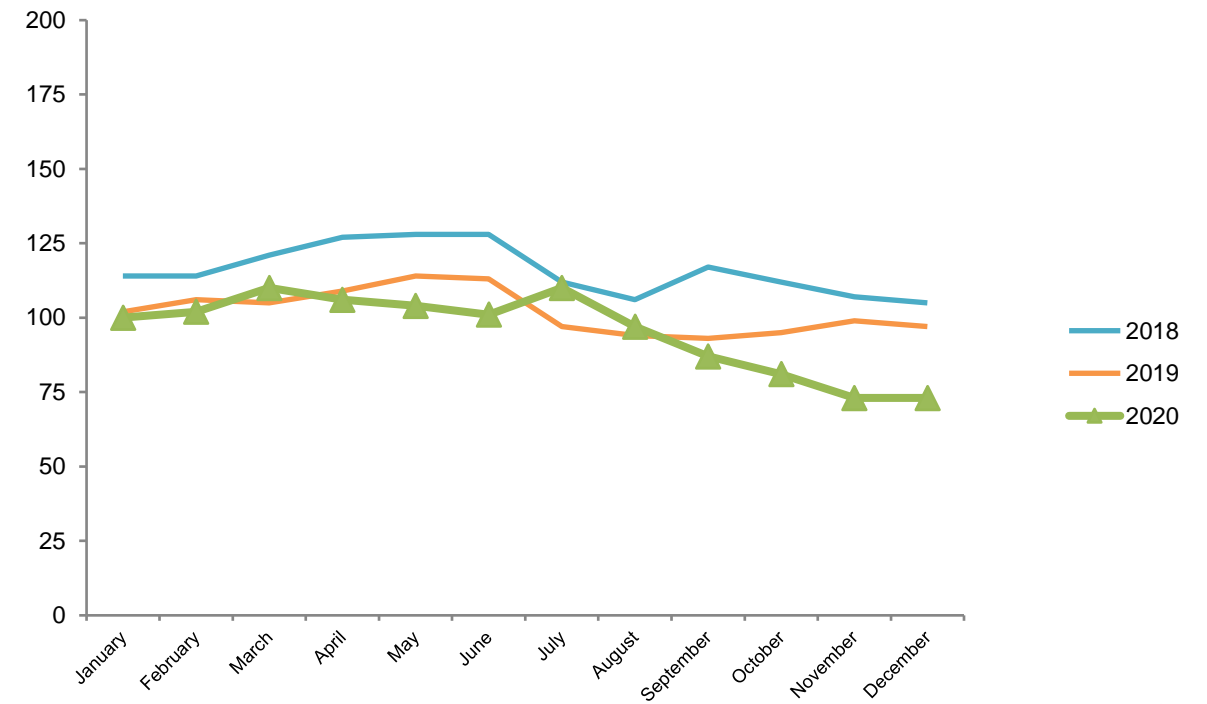


# Child Care: Current Usage Statistics

### Children Receiving Fee Subsidy

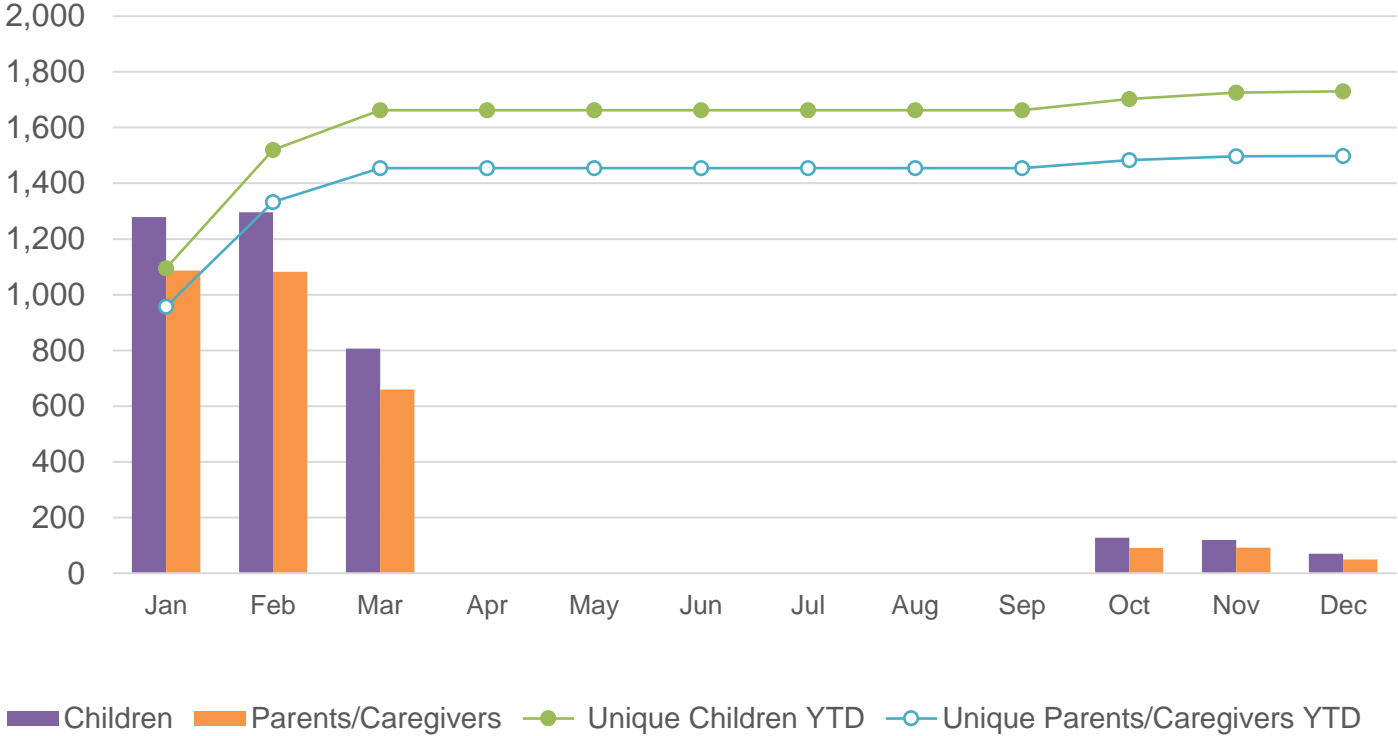


### Children Receiving Special Needs Services



# Early Years Programs: EarlyON

Children and Parents Who Attended an EarlyON Centre in the District of Thunder Bay



**Services and Programs Provided to meet clients needs during COVID-19 pandemic closure**

# of Virtual Programs offered in Q4 311

# of Contactless Delivery of Learn at Home Kits in Q4 622

NOTE: All EarlyON centres were closed for in-person visits/programs during Q2 and Q3 due to COVID-19 pandemic.

