



# TBDSSAB Quarterly Operational Report

Report No. 2020-54

TBDSSAB 3<sup>rd</sup> Quarter Operational Report

# Table of Contents

## **Social Housing**

- ❖ Waitlist and Housed Statistics 3
- ❖ Applicant Data 4
- ❖ New Tenant Data 5
- ❖ Shelter Use and Chronic Homelessness 6

## **Ontario Works**

- ❖ Caseload Statistics 7
- ❖ Employment Assistance Services 8

## **Child Care**

- ❖ Waitlist by Age Category 10
- ❖ Waitlist Trends 11
- ❖ Current Usage Statistics 12

## **Early Years Programs**

- ❖ EarlyON 13



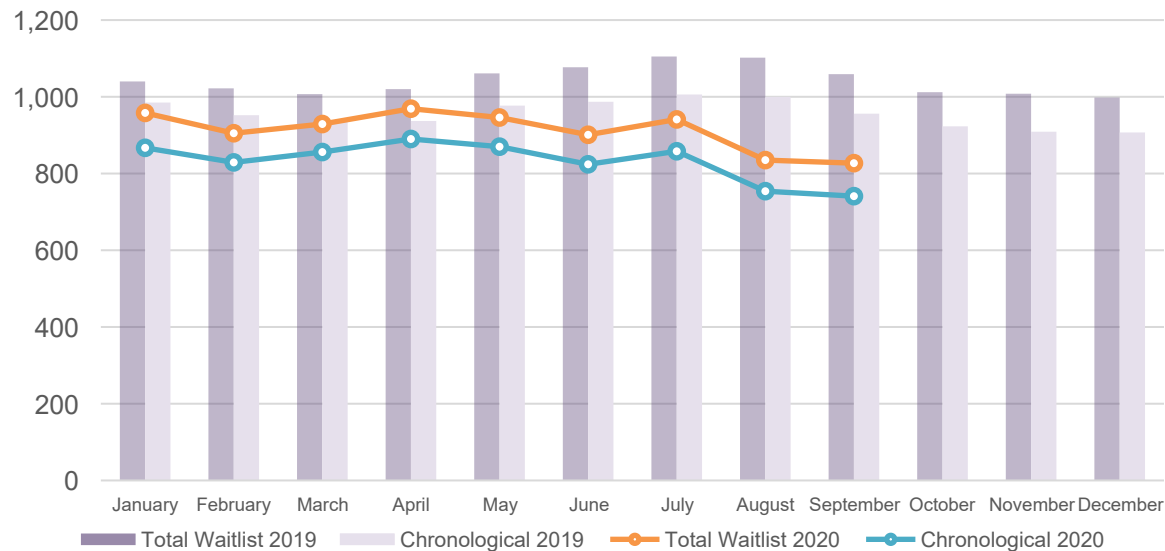
# Social Housing: Waitlist and Housed Statistics

<b>Total Applicants on Waitlist</b>	<b>827</b>
Special Priority Program (SPP)	10
Exceptional – High Needs Homeless	58
Exceptional – Other	18
Chronological	741

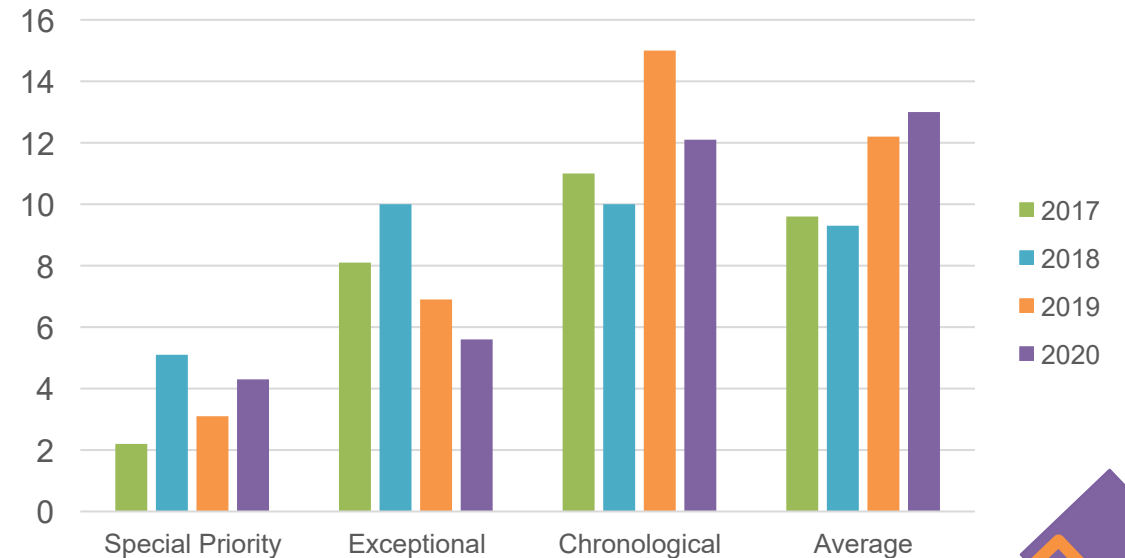
## 2020 Year to Date Average Time on Waitlist since Application

	<b>Months</b>
Special Priority Program	4.3
Exceptional	5.6
Chronological	12.1
<b>Average</b>	<b>13</b>

**Total and Chronological Waitlist Trends <sup>1</sup>**

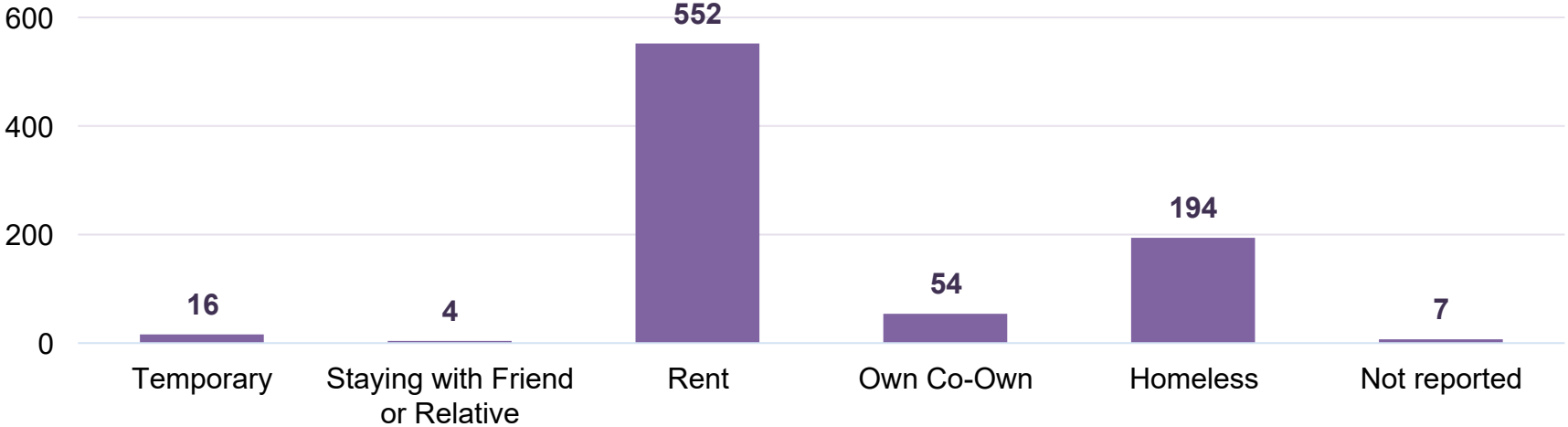


**Average Time on Waitlist Year over Year in Months**

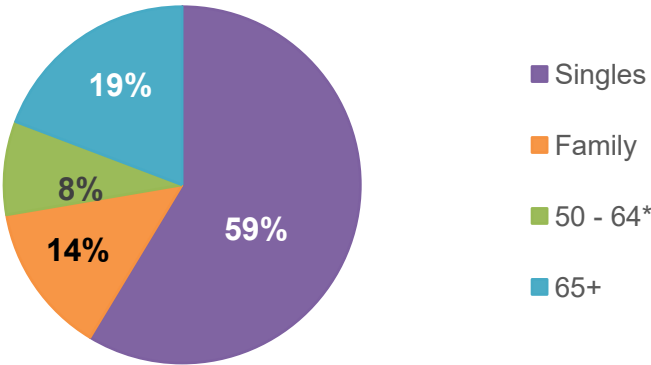


# Social Housing: Applicant Data

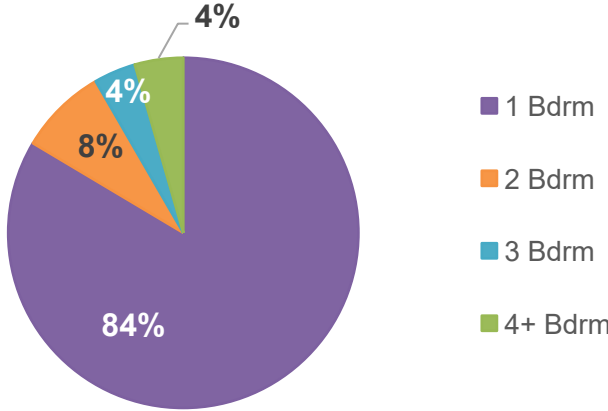
### Current Housing Status of Applicants, as of end of Q3



### Household Type Demand, as of end of Q3



### Unit Type Demand, as of end of Q3



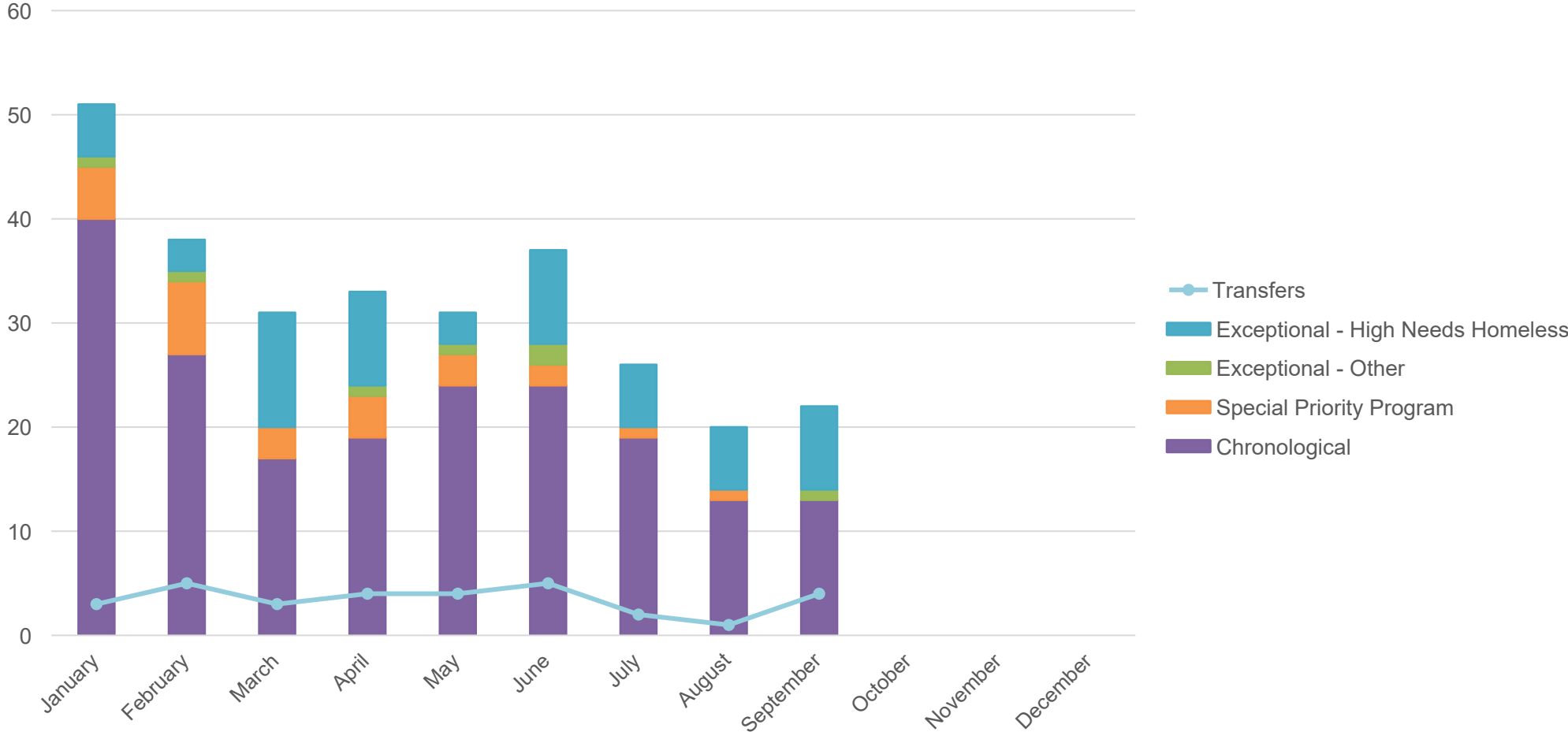
\* Includes applicants 50-64 who applied for Senior units, and special BISNO project with McKellar Place



# Social Housing: Applicants Housed



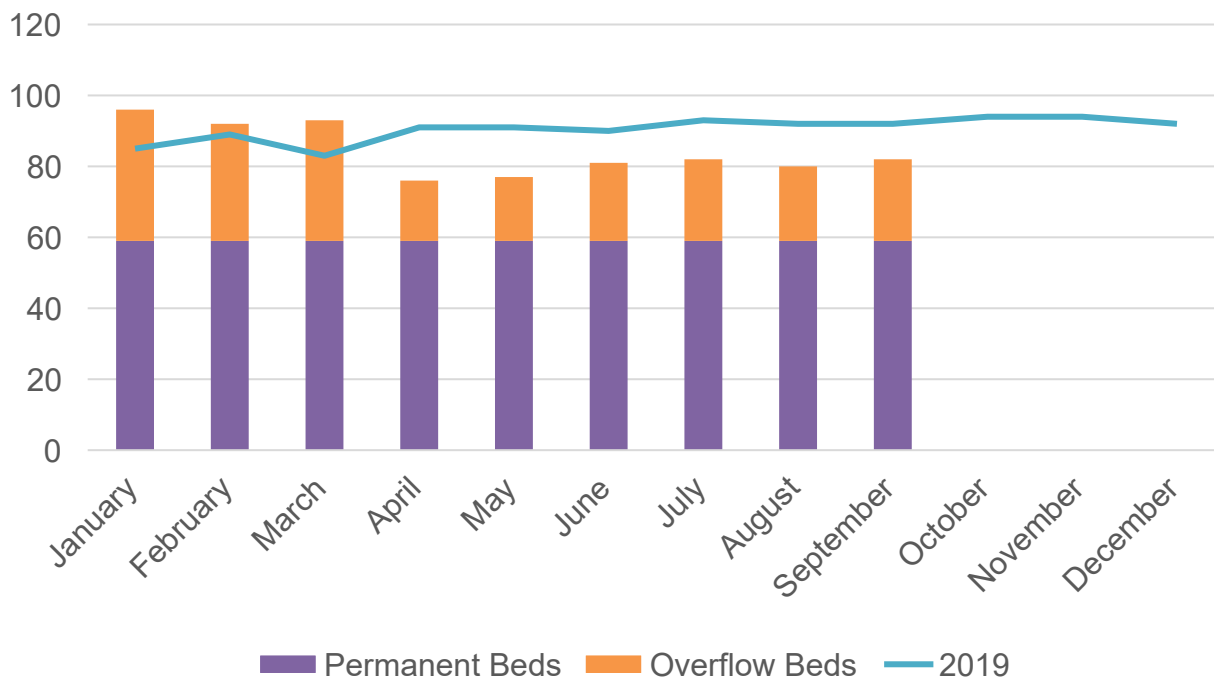
Housed by Application Type



# Shelter Use and Chronic Homelessness

[Back to Table of Contents](#)

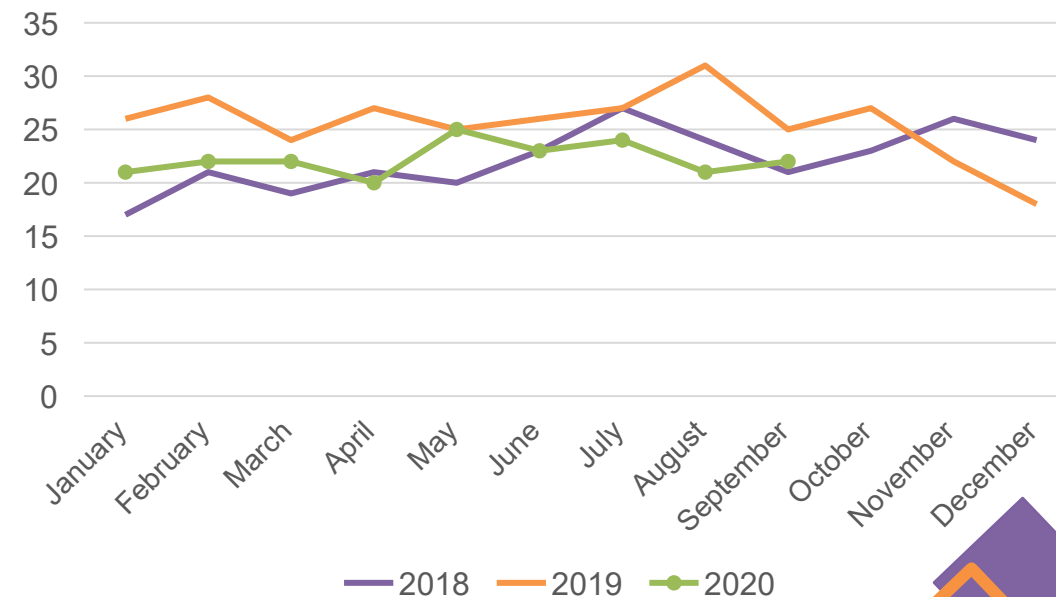
Average Daily Shelter Usage - Beds



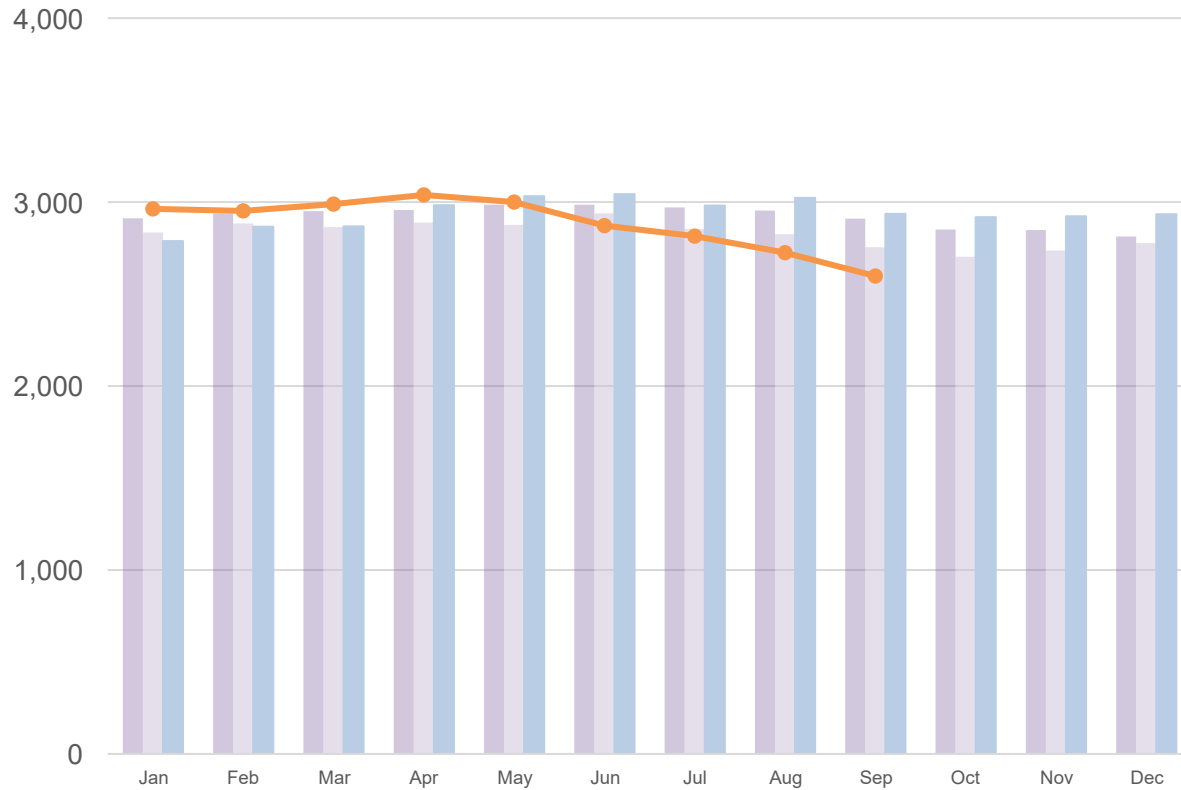
	Daily Average Number of Isolation Shelter Rooms	Daily Average Number of Overflow Shelter Rooms
July	16.35	3.39
August	15.61	2.77
September	14.7	1.4

	Q3	Year to Date
<b>Total Housed on Transitional Outreach Support Caseload</b>	<b>11</b>	<b>62</b>
Initial SPDATs Administered	19	63
Follow Up SPDAT assessments	11	21

Number of People Experiencing Chronic Homelessness Using Shelters by Month



### OW Caseload <sup>1</sup>



OW Caseload <sup>1</sup>

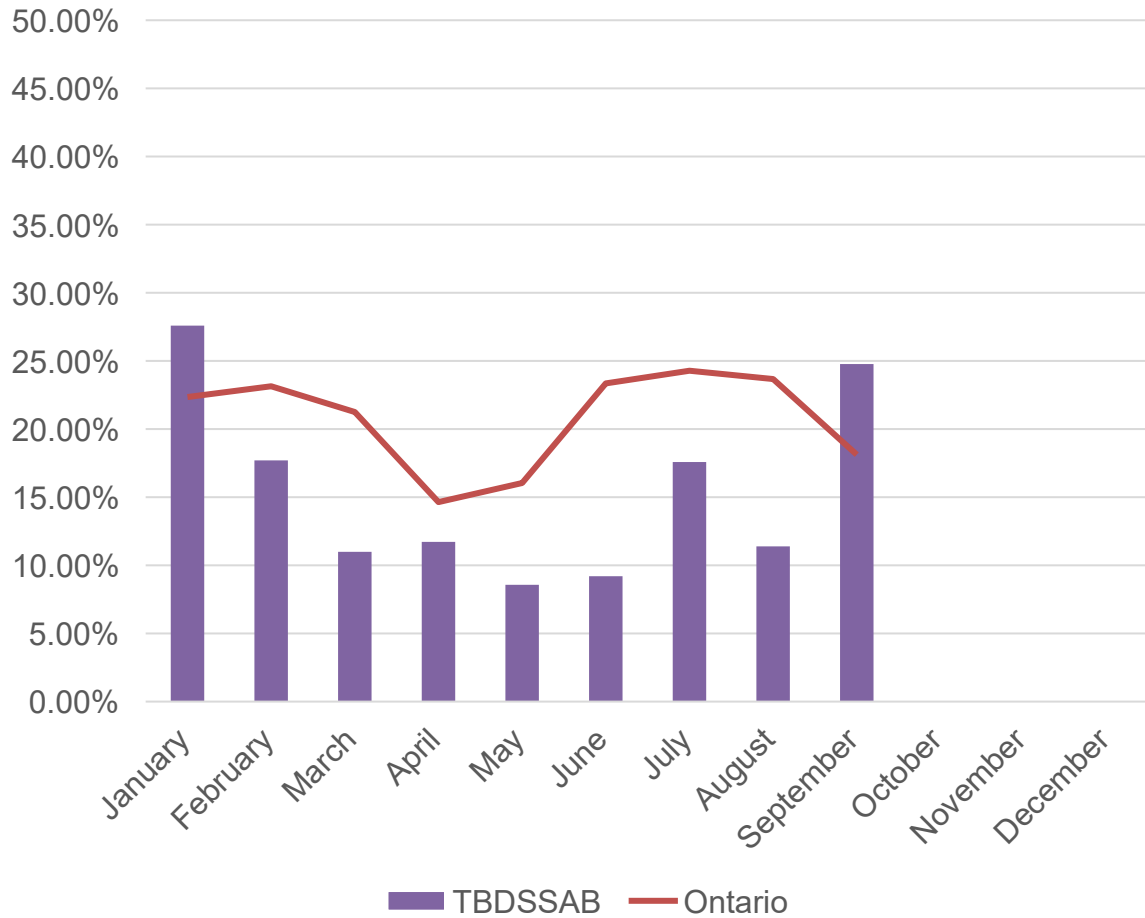
**2,598**

Number of Cases	
Temp Care Cases	214
ODSP Participating	54

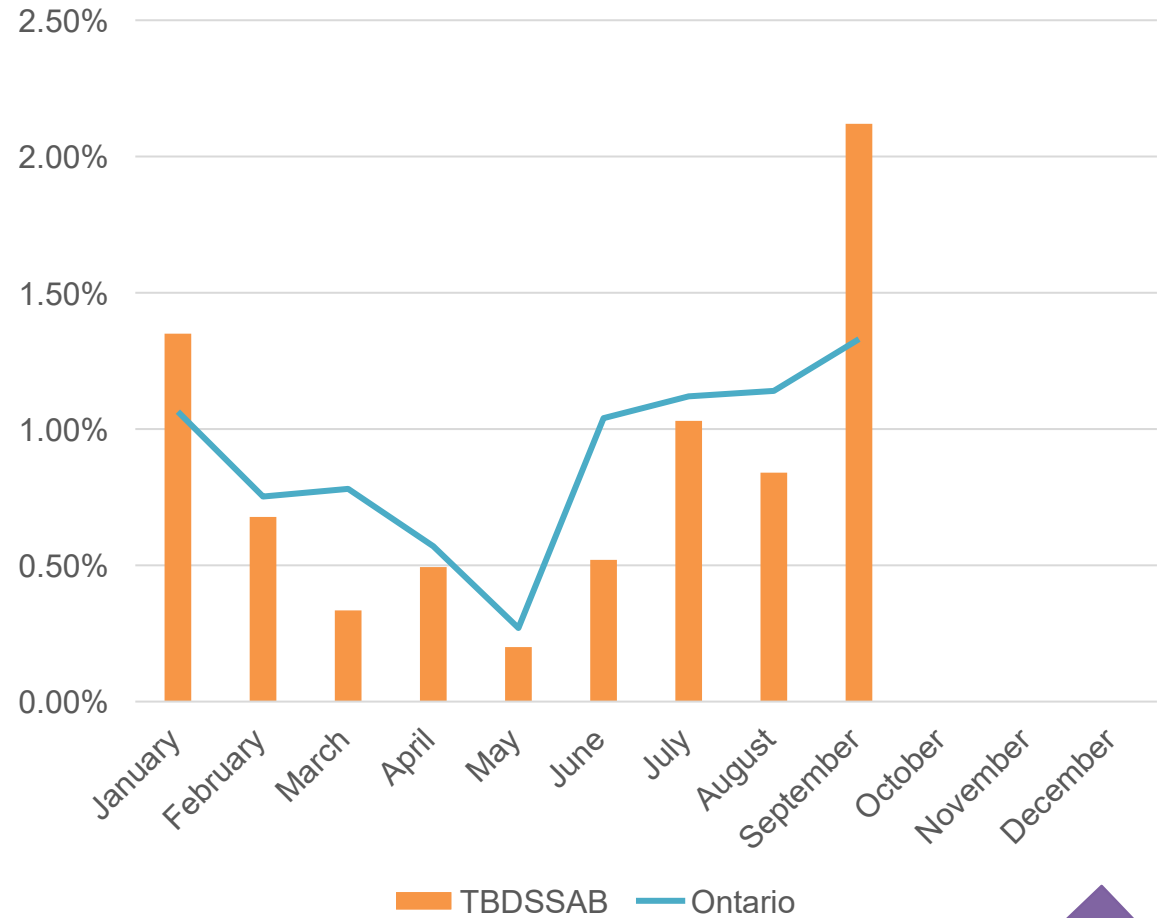


# Ontario Works: Employment Assistance Services

### % of Terminations Exiting to Employment\*



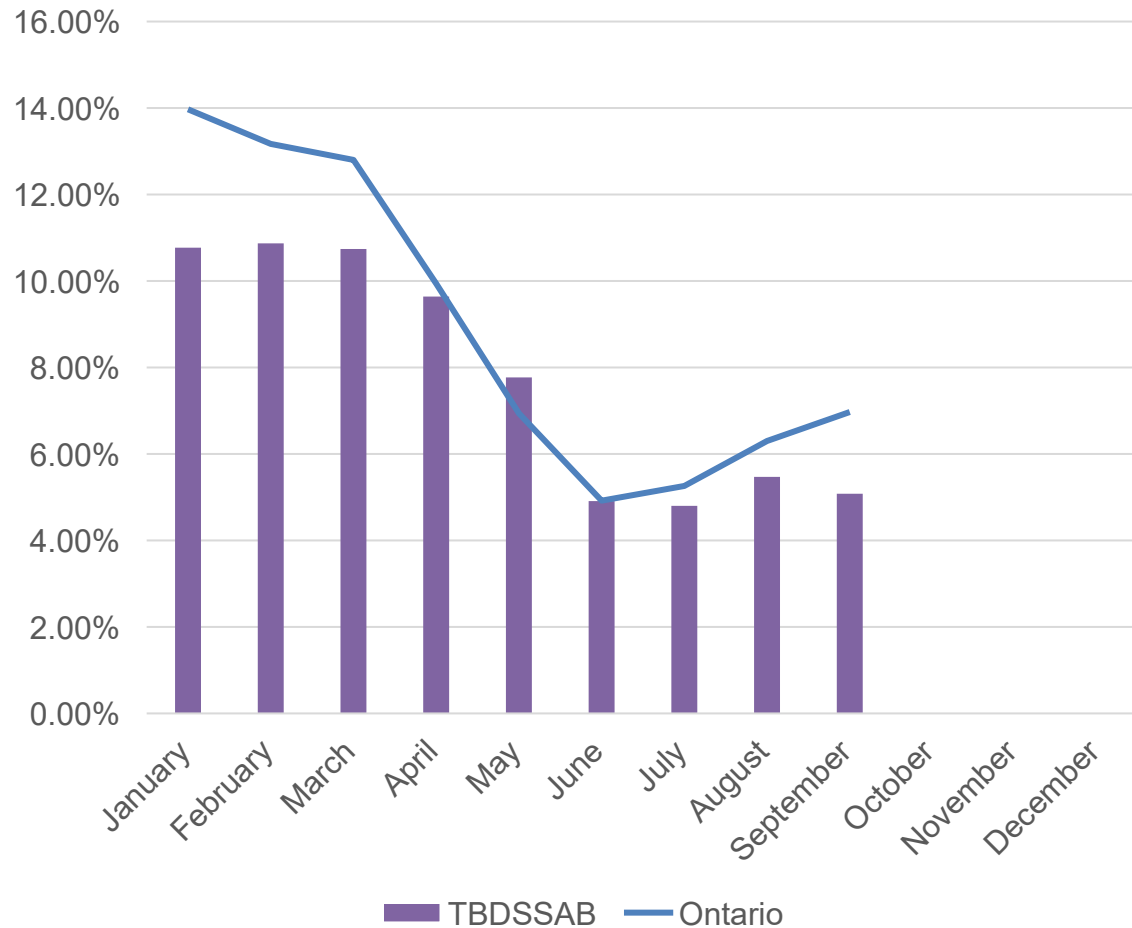
### % of Caseload Exiting to Employment



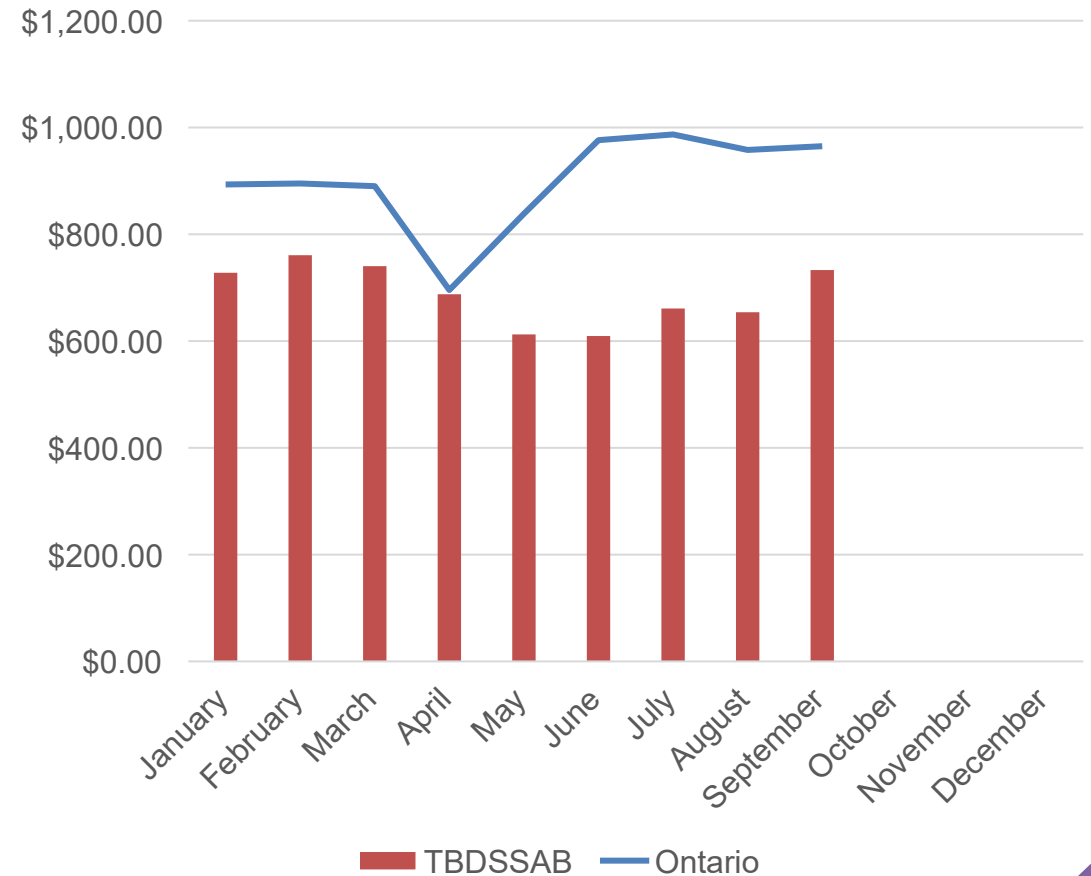


# Ontario Works: Employment Assistance Services

### % Caseload with Employment Earning



### Average Monthly Employment Earnings by Case

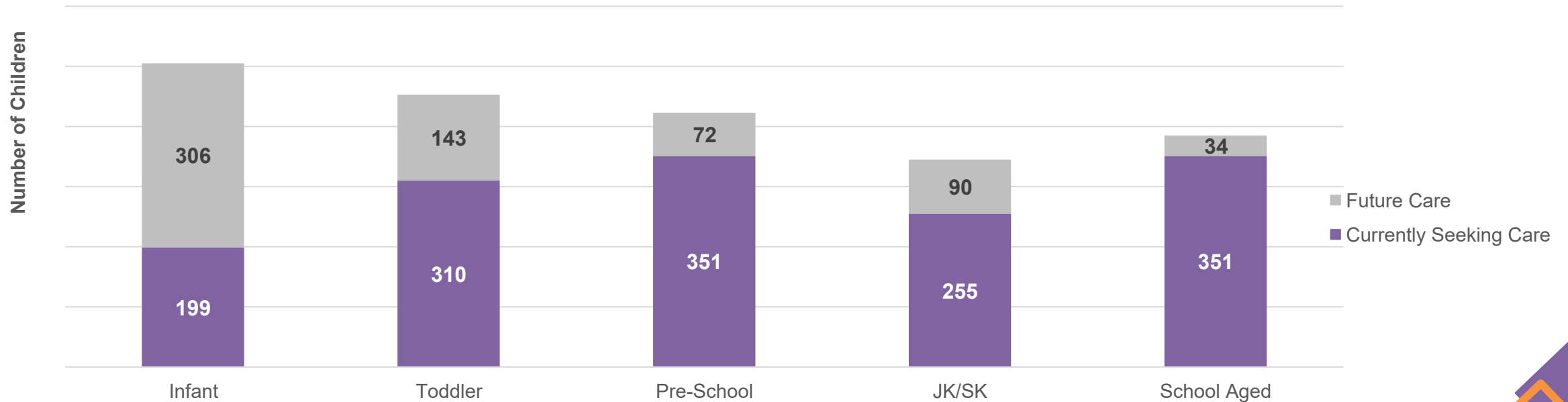


# Child Care: Waitlist by Age Category

Number of Families Applying for Fee Subsidy*	744	Number of Families for a Full Pay Space	1,367
Number of Families Applying Special Needs Services*	96	Number of Placed Children Q3	185

\*Note – applications are subject to eligibility review.

**Total Child Care Waitlist and Children Currently Waiting for Care  
(Individual/Unique Children)**

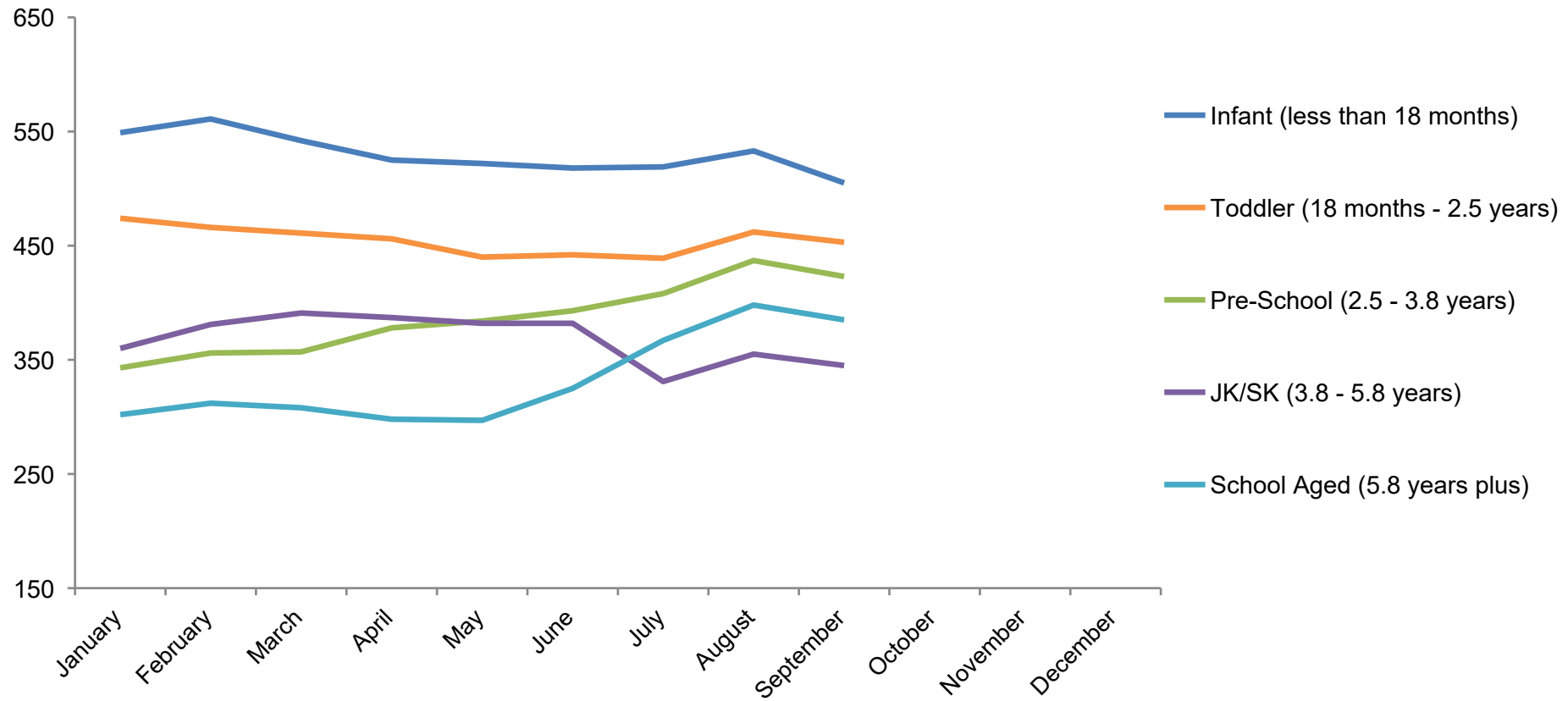


---

Total Waitlist as of end of Q3 2020    2,111    Percent of Waitlist Currently Seeking Care as of end of Q3 2020    69%

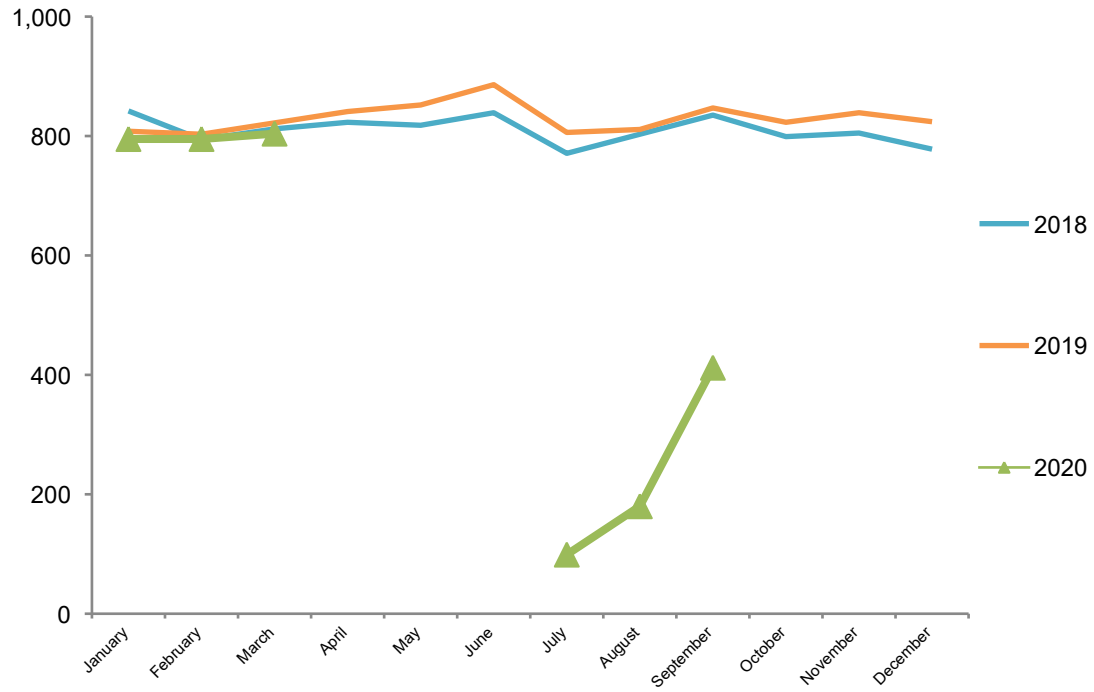
---

## Total Waitlist Trends by Program: 2020

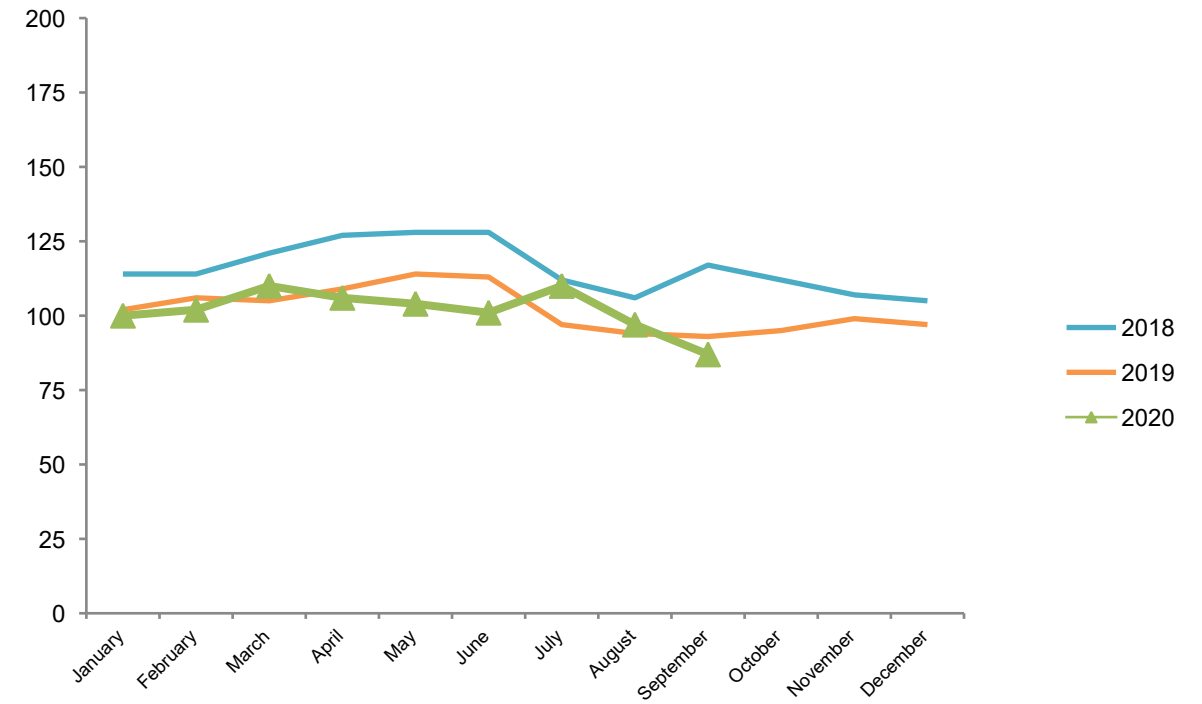


# Child Care: Current Usage Statistics

### Children Receiving Fee Subsidy

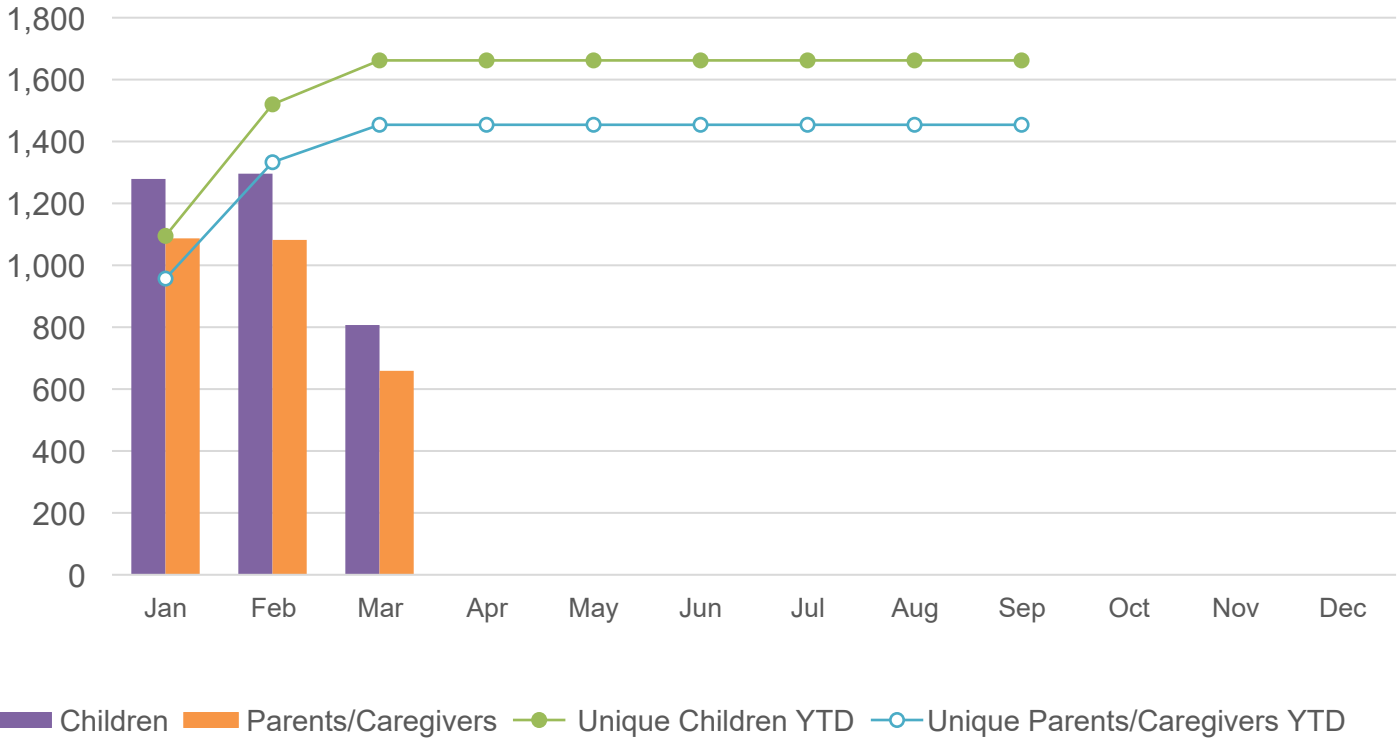


### Children Receiving Special Needs Services



# Early Years Programs: EarlyON

Children and Parents Who Attended an EarlyON Centre in the District of Thunder Bay



**Services and Programs Provided to meet clients needs during COVID-19 pandemic closure**

# of Virtual Programs offered in Q3 359

# of Contactless Delivery of Learn at Home Kits in Q3 289

NOTE: All EarlyON centres were closed for in-person visits/programs during Q2 and Q3 due to COVID-19 pandemic.

