

# Financial Context

For the 2021 Budget Process



THE DISTRICT OF THUNDER BAY  
SOCIAL SERVICES ADMINISTRATION BOARD

**TBDSSAB Board Meeting**

**Thursday, October 15, 2020**

Presented by:

**William (Bill) Bradica**  
Chief Administrative Officer

**Ken Ranta**  
Director, Integrated Social Services

**Georgina Daniels**  
Director, Corporate Services

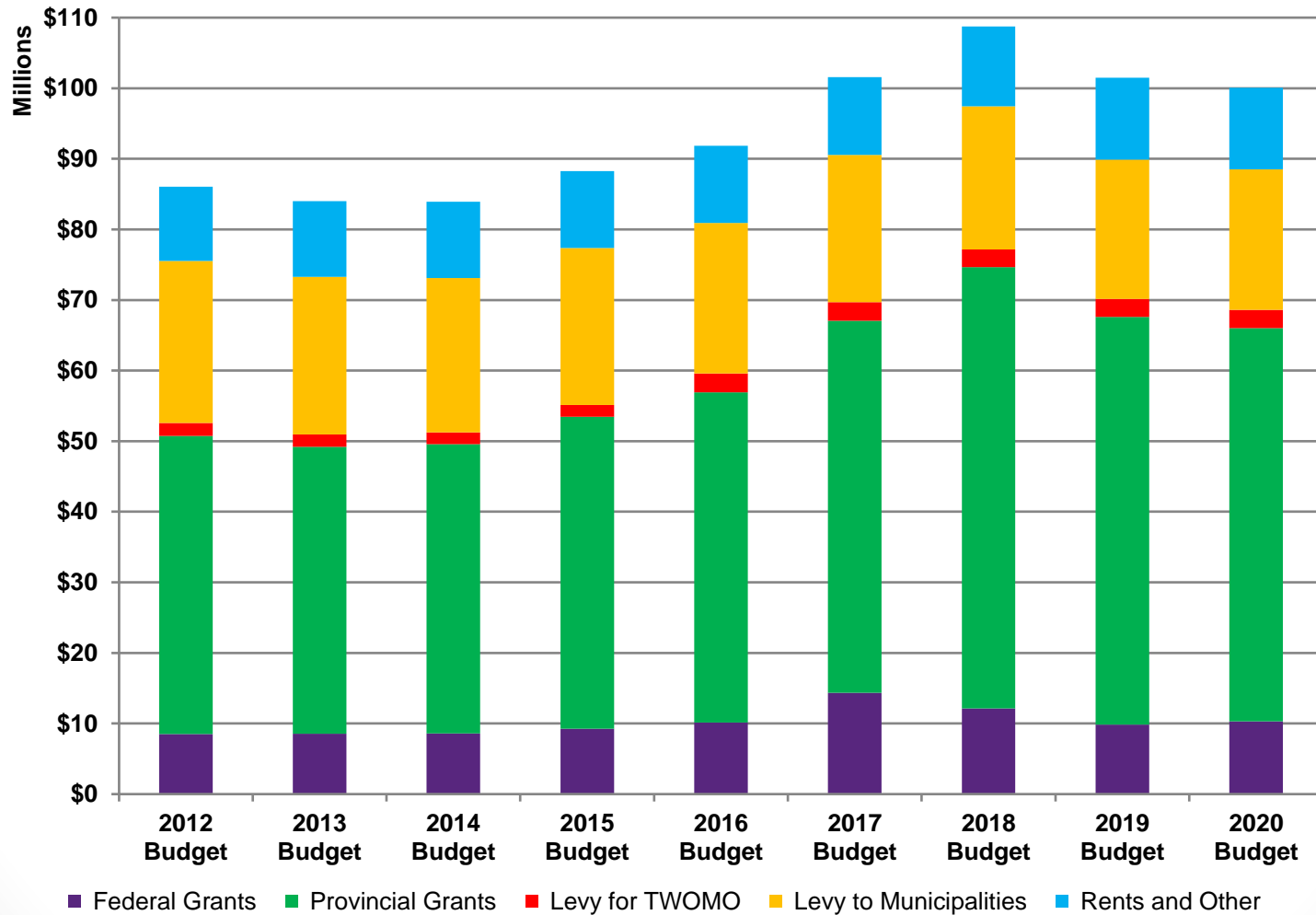


# Budget History

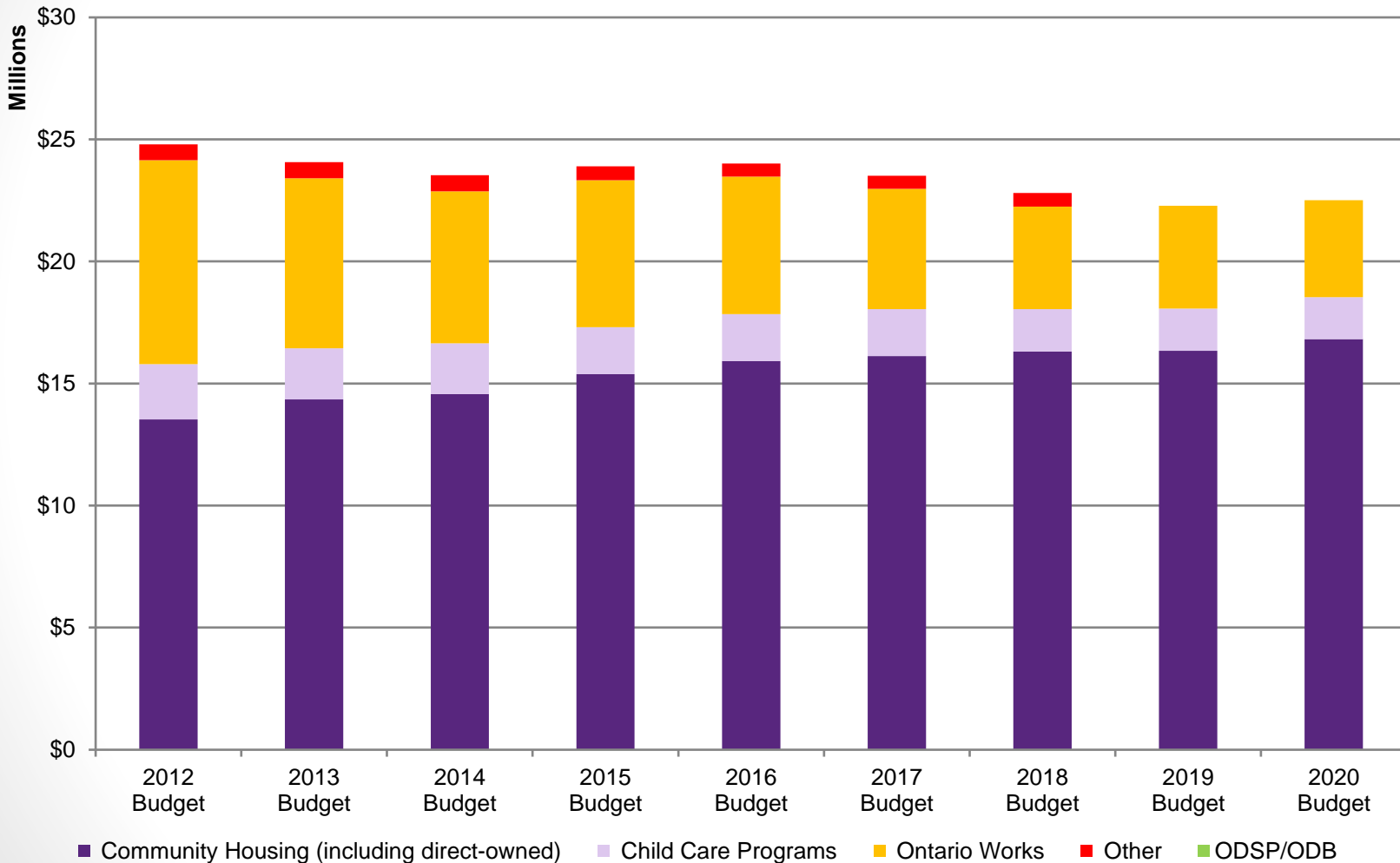
1. Revenue History and Trends
2. Levy History
3. Levy vs CPI
4. Expense History and Trends, by Program



# 1. Revenue History and Trends: REVENUE SOURCES

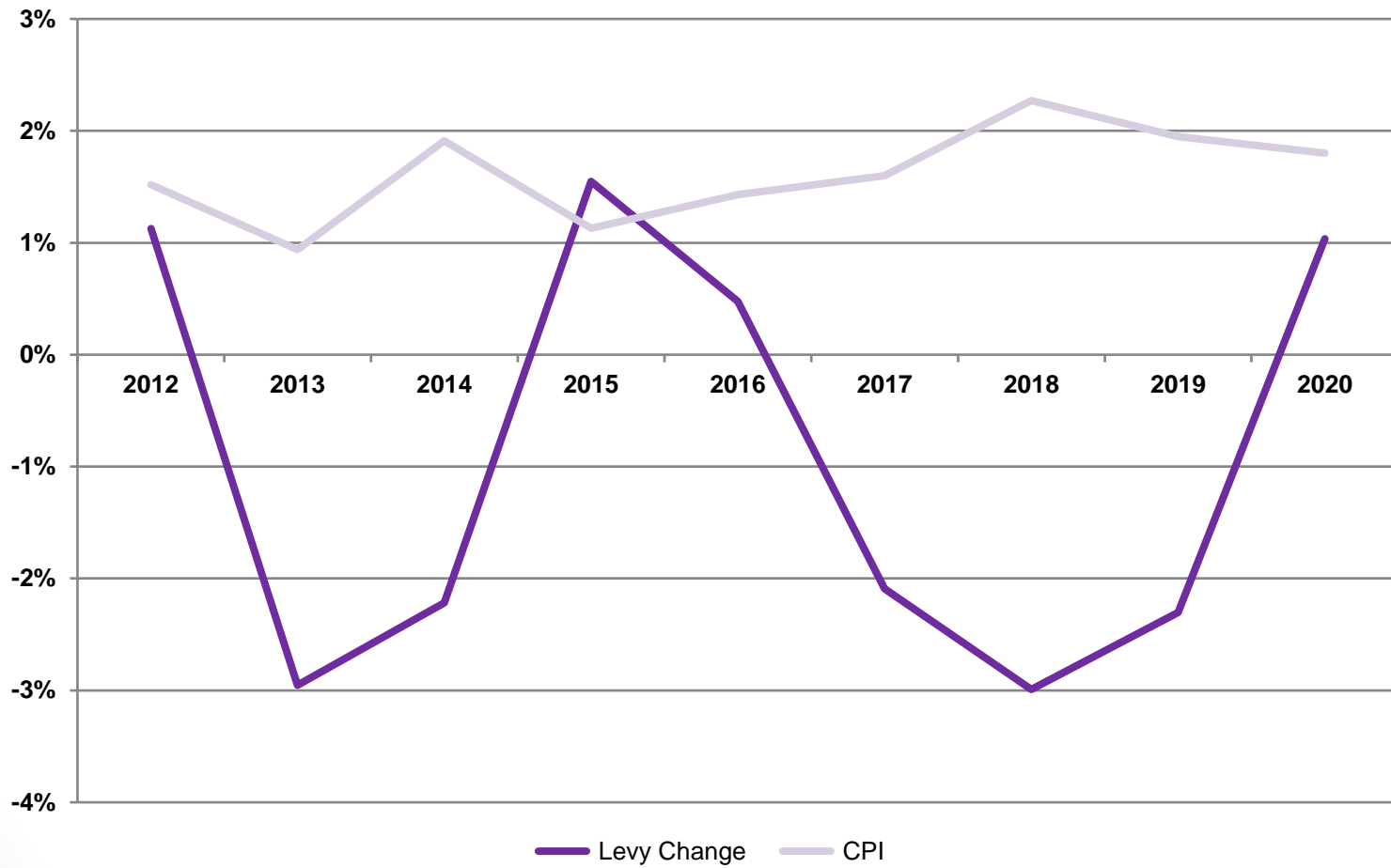


## 2. Levy History: LEVY DISTRIBUTION BY PROGRAM

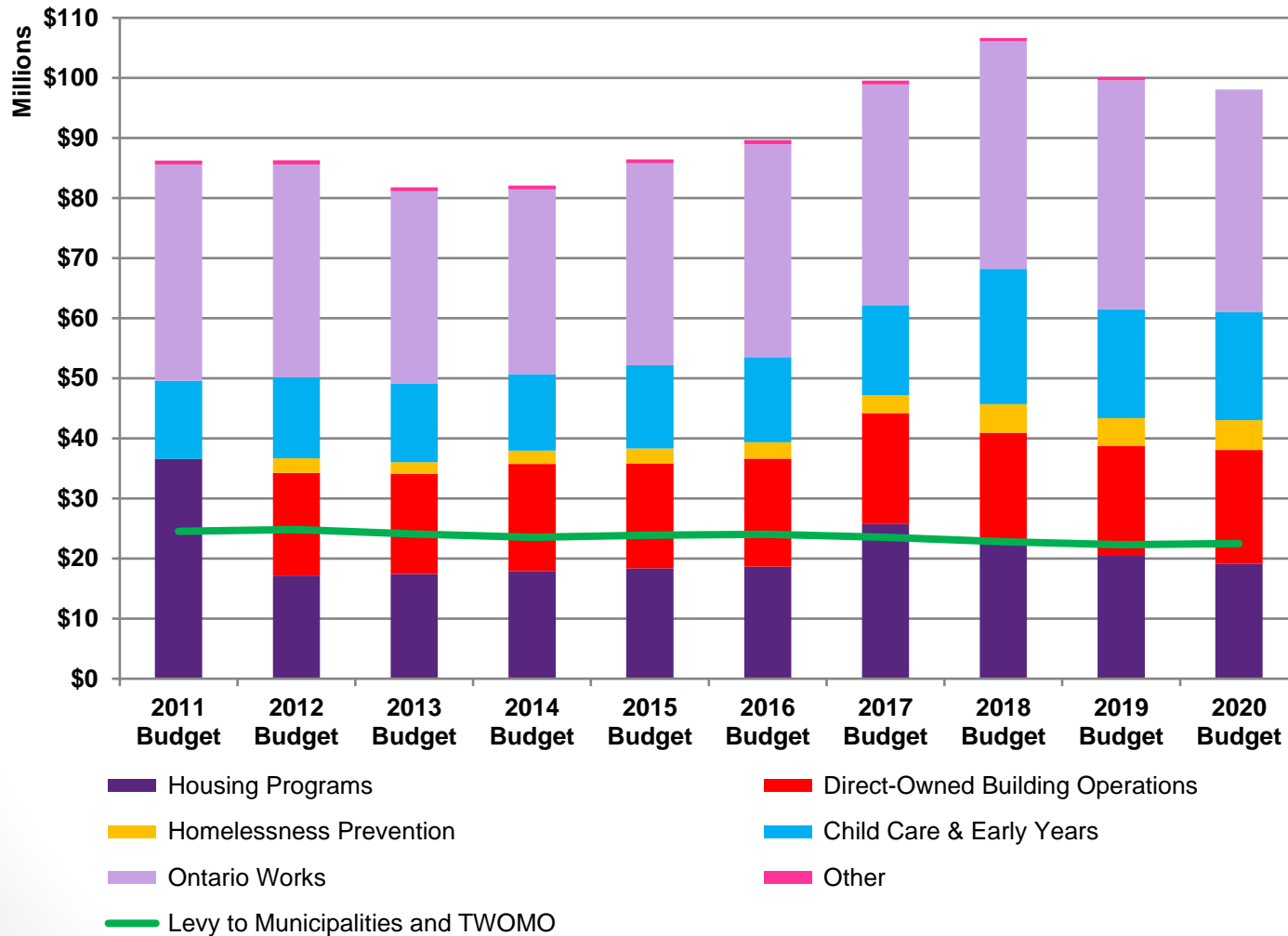


### 3. Levy vs CPI:

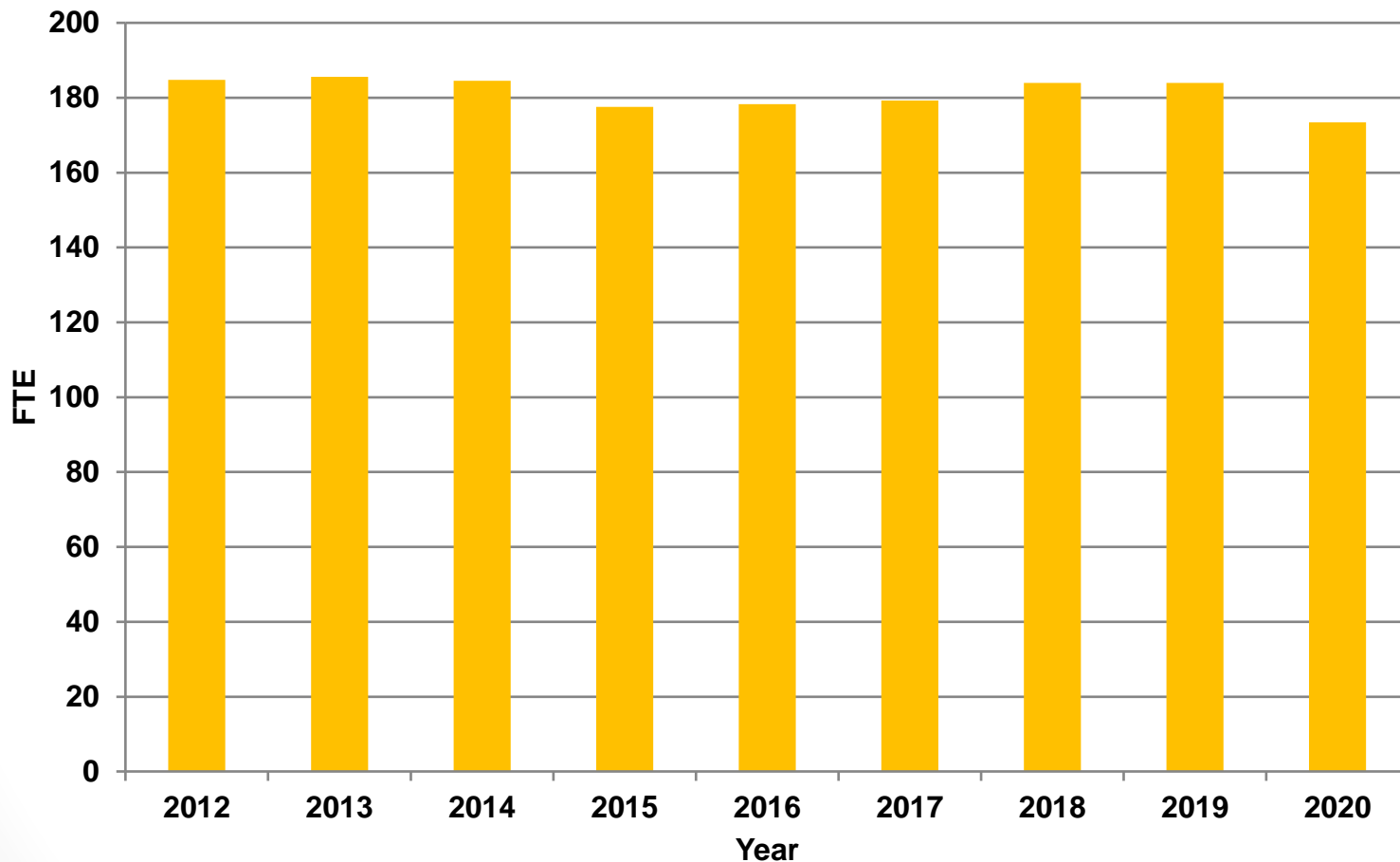
# LEVY CHANGES vs CPI CHANGES



# 4. Expense History and Trends: TOTAL BUDGET EXPENDITURES



# 4. Expense History and Trends: HISTORICAL STAFF COMPLEMENT



# Current State and Plans Impacting 2021 and Beyond

1. TBDSSAB Strategic Plan
2. Ontario Works, incl Employment
3. Child Care and Early Years
4. Community Housing and Homeless Prevention
5. Corporate Services





# 1. TBDSSAB 2020 – 2023 Strategic Plan PLANS IMPACTING 2021

## Strategic Plan Objectives with a 2021 Budget implication:

- Employment services in designated locations including housing buildings.
- 500 unique placements.
- Ten (10) community stakeholder information sharing sessions.
- Five (5) Board to Board formal relationships with Indigenous organizations.
- Community partners survey to get feedback on TBDSSAB performance as a service system manager.
- Two (2) non-business Board meetings to learn about and discuss local solutions and opportunities.



## 2. Ontario Works, Incl. Employment: PLANS IMPACTING 2021

- Modernization
- Employment Outcomes
- OW Audit by the Provincial Auditor  
– implications
- Electronic Document Management
- Clark Tool for employment



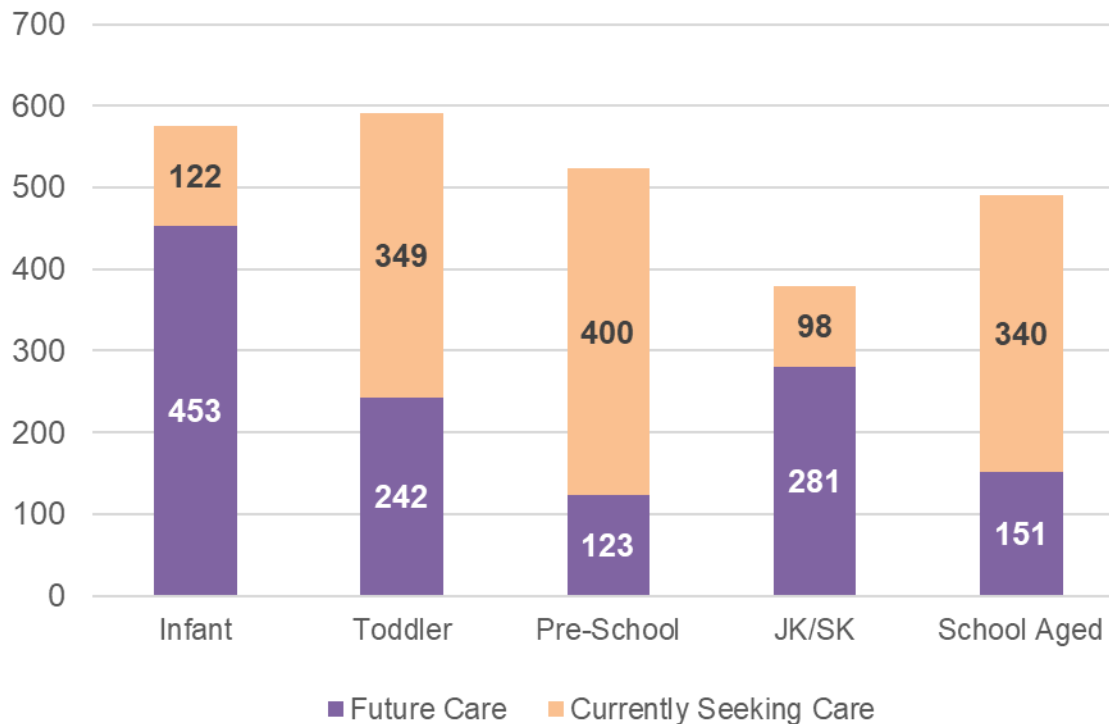
### 3. Child Care and Early Years: PLANS IMPACTING 2021

- ❖ Pedagogist Network
- ❖ Child Care and Early Years Plan
- ❖ Advisory Table



# 3. Child Care and Early Years: WAIT LIST (September 2020)

Child Care Waitlist by Children Currently Waiting for Care and Waiting for Future Care (Individual/Unique Children) <sup>1</sup>



## 4. Community Housing and Homeless Prevention: PLANS IMPACTING 2021

- ❖ Housing and Homelessness Plan
- ❖ Community Housing Renewal Strategy (COCHI, OPHI)
- ❖ End of Operating Agreements
- ❖ Impacts of 0% rent increase for 2021
- ❖ Social Services Relief Fund (SSRF)



## 5. Corporate Services PLANS IMPACTING 2021

- ❖ Accountable Advances
- ❖ Risk Management Framework and Program
- ❖ Building Condition Assessments
- ❖ Capital Regeneration
- ❖ Sustainable Building Design

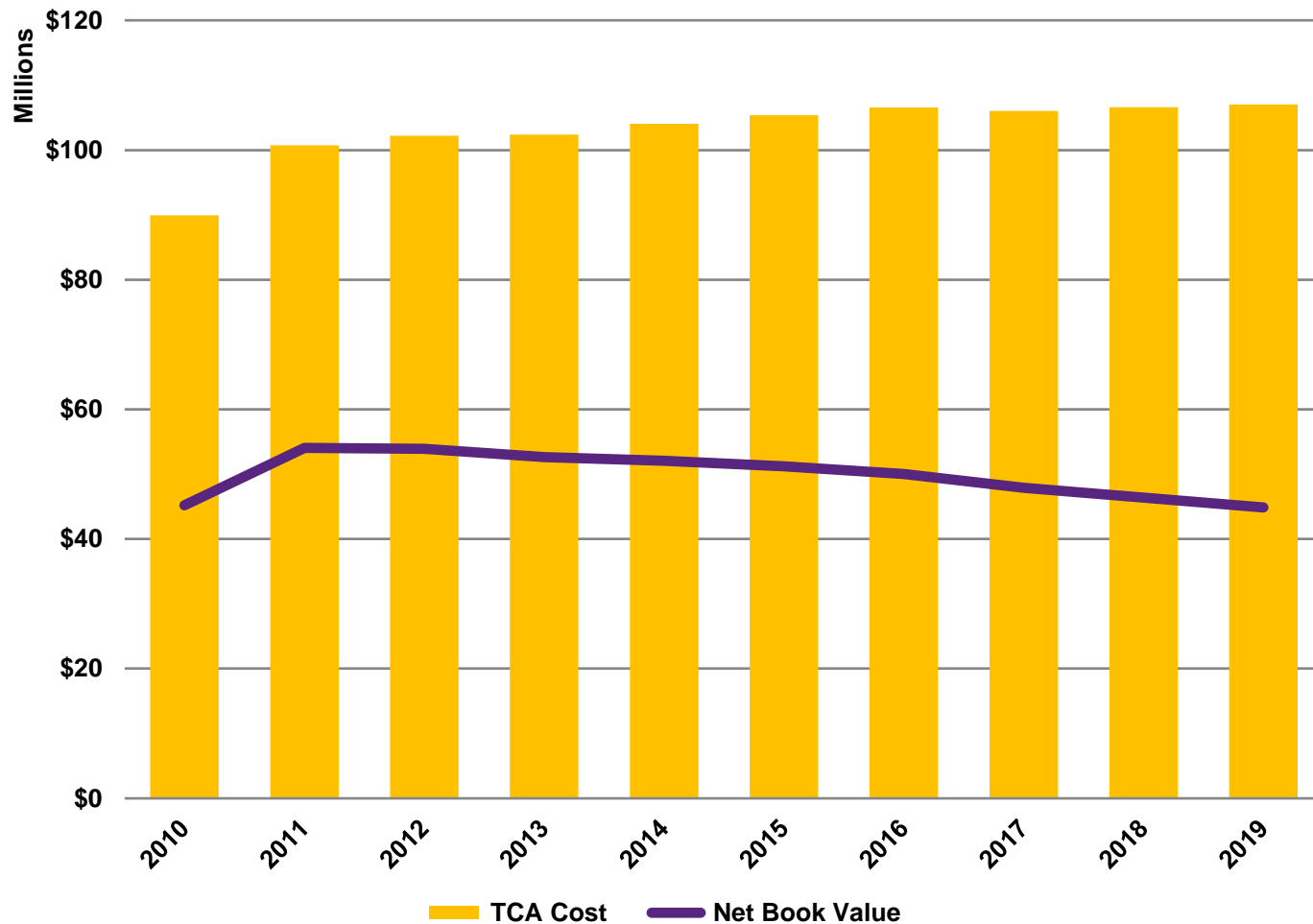


# Financial Overview – Assets and Liabilities

1. Tangible Capital Assets
2. History of Reserve Funds
3. Debt Payment History

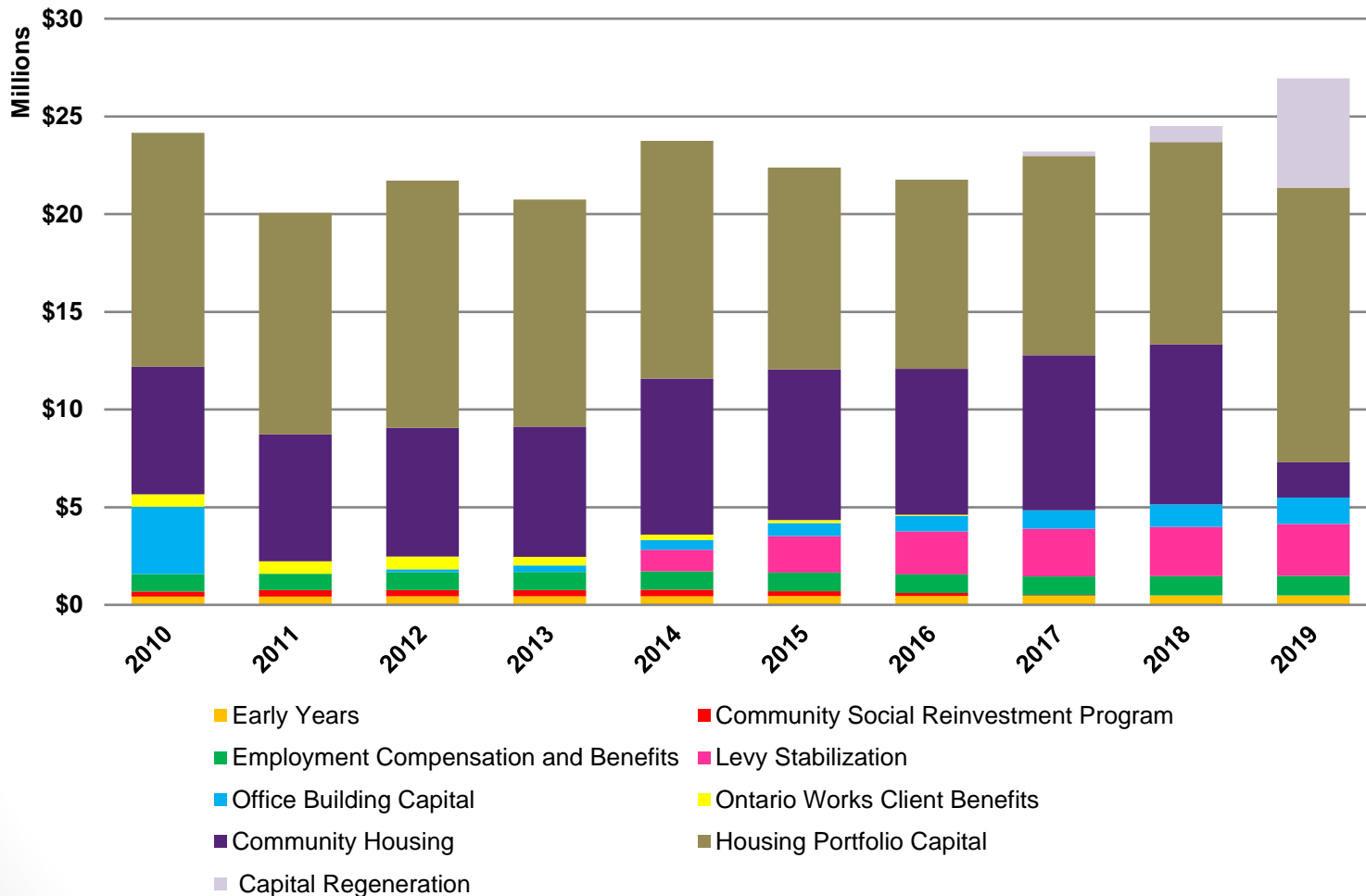


# 1. Assets and Liabilities: TANGIBLE CAPITAL ASSETS

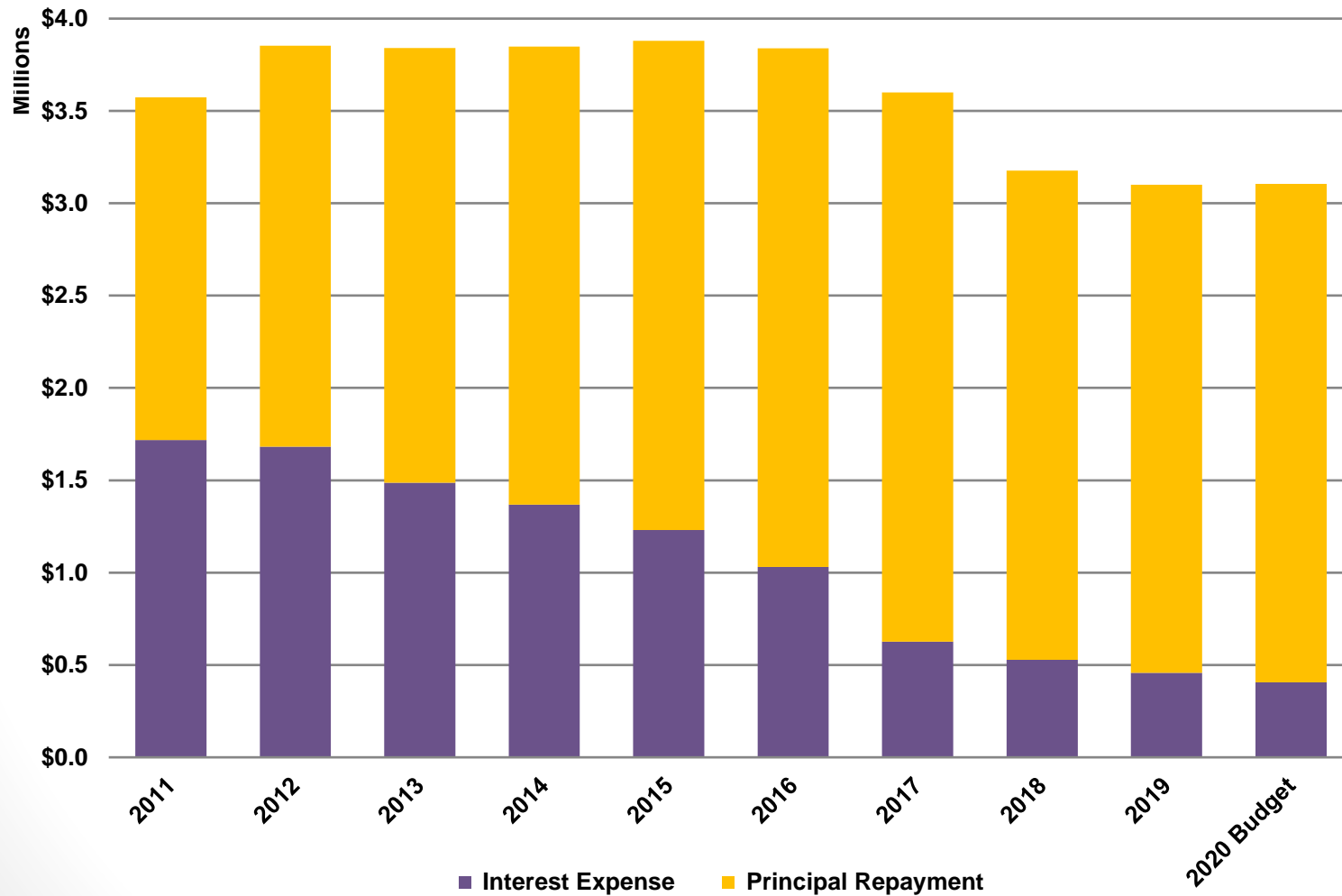




## 2. Assets and Liabilities: HISTORY OF RESERVE FUNDS



# 3. Assets and Liabilities: DEBT PAYMENT HISTORY



# Future Years

2021, 2022 Context and Impact



# 2021 Context and Assumptions:

Program Area	2021 Impacts
Ontario Works	<ul style="list-style-type: none"> <li>• Program Delivery Funding frozen at 2018 level of \$10,640,233</li> <li>• Indicator non-compliance = 15% reduction in funding</li> <li>• Funding model under review by Province</li> </ul>
Child Care and Early Years	<ul style="list-style-type: none"> <li>• Expansion Plan funded at 80:20 Provincial: Municipal, if used</li> <li>• Administration Funding: cost sharing changing from 100% Provincial to 50:50 Provincial: Municipal</li> <li>• Levy Impact: \$100,000 Increase</li> </ul>
Housing & Homelessness Prevention	<ul style="list-style-type: none"> <li>• COCHI Planning Allocation: \$508,409 (2020/21)</li> <li>• OPHI Planning Allocation: \$641,100 (2020/21)</li> <li>• CHPI Planning Allocation: \$3,542,466</li> <li>• HFG Planning Allocation: TBD</li> <li>• Rent freeze: \$???,???</li> </ul>



# 2022 Context and Assumptions:

Program Area	2022 Impacts (Known)
Ontario Works	<ul style="list-style-type: none"> <li>Unknown</li> </ul>
Child Care and Early Years	<ul style="list-style-type: none"> <li>Expansion Plan funded at 80:20 Provincial: Municipal, if used</li> <li>Administration reduced from 10% to 5%; shared 50:50 Provincial: Municipal</li> <li>Levy Impact: \$156,100 Decrease, could be less or an increase if Board decides to increase share</li> </ul>
Housing & Homelessness Prevention	<ul style="list-style-type: none"> <li>COCHI Planning Allocation: \$1,470,231 (2021/22)</li> <li>OPHI Planning Allocation: \$1,423,530 (2021/22)</li> <li>CHPI Planning Allocation: \$3,542,466</li> <li>HFG Planning Allocation: TBD</li> </ul>



Thank you.

***Questions?***

