



TBDSSAB Quarterly Operational Report

Report No. 2019-44

TBDSSAB 2019 2nd Quarter Operational Report

Table of Contents

Social Housing

- ❖ Waitlist and Housed Statistics 3
- ❖ Applicant Data 4
- ❖ New Tenant Data 5
- ❖ Shelter Use and Chronic Homelessness 6

Ontario Works

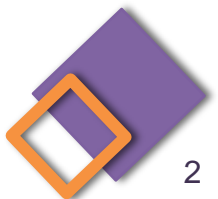
- ❖ Caseload Statistics 7
- ❖ Employment Assistance Services 8

Child Care

- ❖ Waitlist by Age Category 10
- ❖ Waitlist Trends 11
- ❖ Current Usage Statistics 12

Early Years Programs

- ❖ EarlyON 13



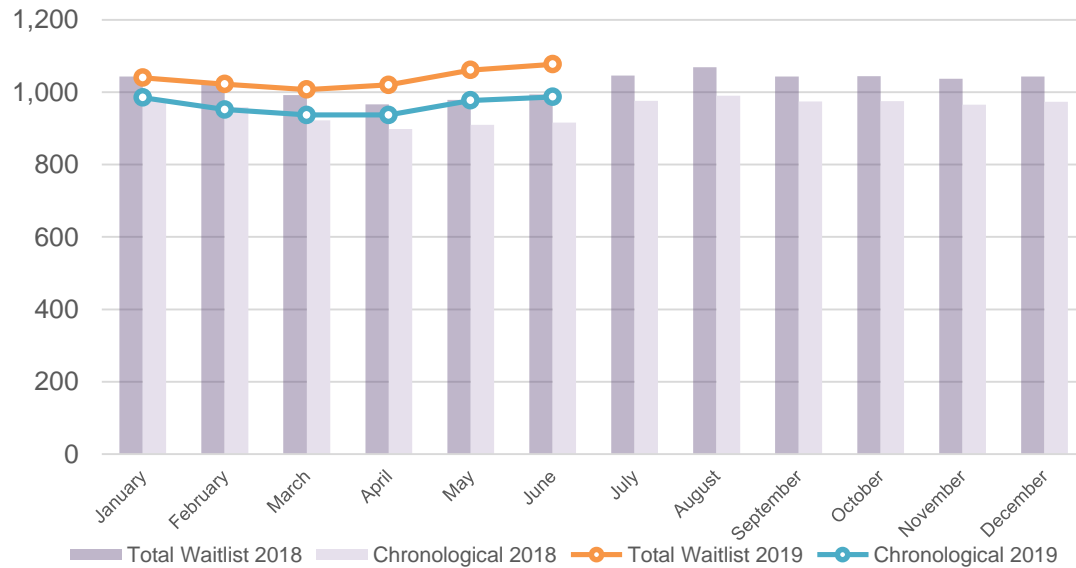
Social Housing: Waitlist and Housed Statistics

Total Applicants on Waitlist	1,077
Special Priority Program (SPP)	12
Exceptional – High Needs Homeless	58
Exceptional – Other	20
Chronological	987

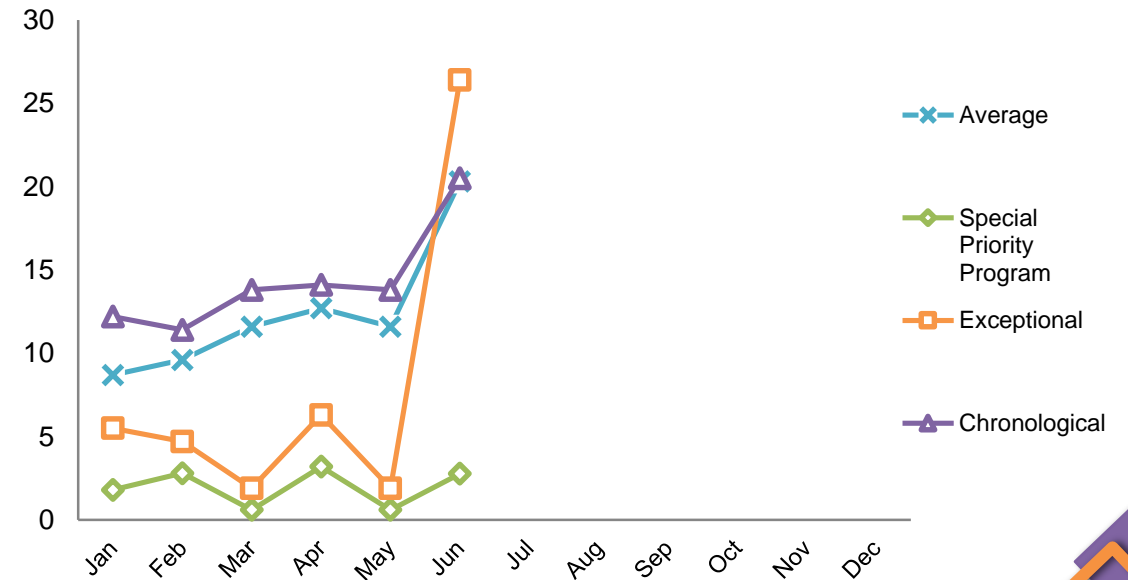
2019 Year to Date Average Time on Waitlist since Application

	Months
Special Priority Program	2.5
Exceptional	7.0
Chronological	15.1
Average	13.1

Total and Chronological Waitlist Trends ¹

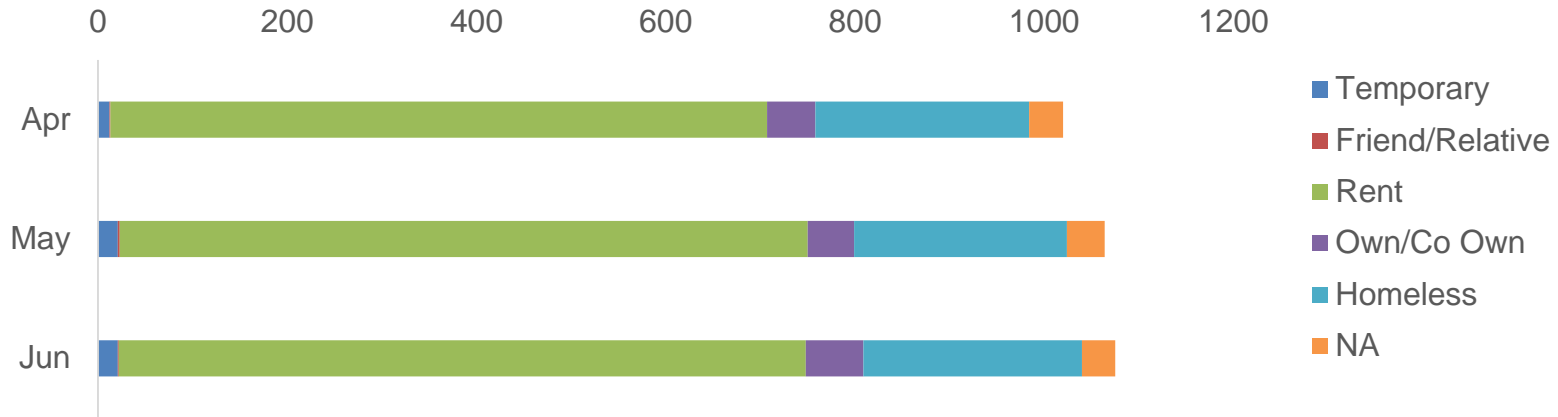


Average Time on Waitlist Since Application by Month Housed

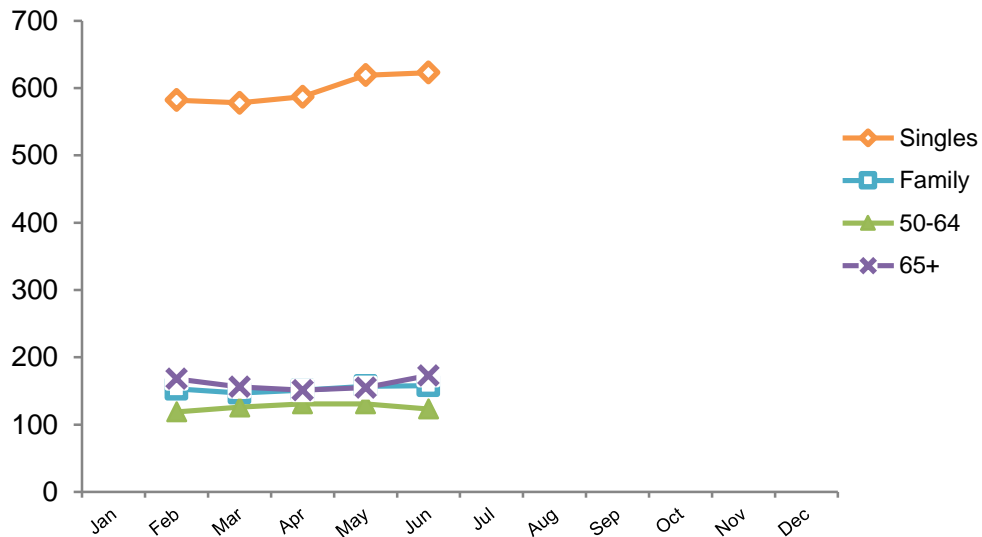


Social Housing: Applicant Data

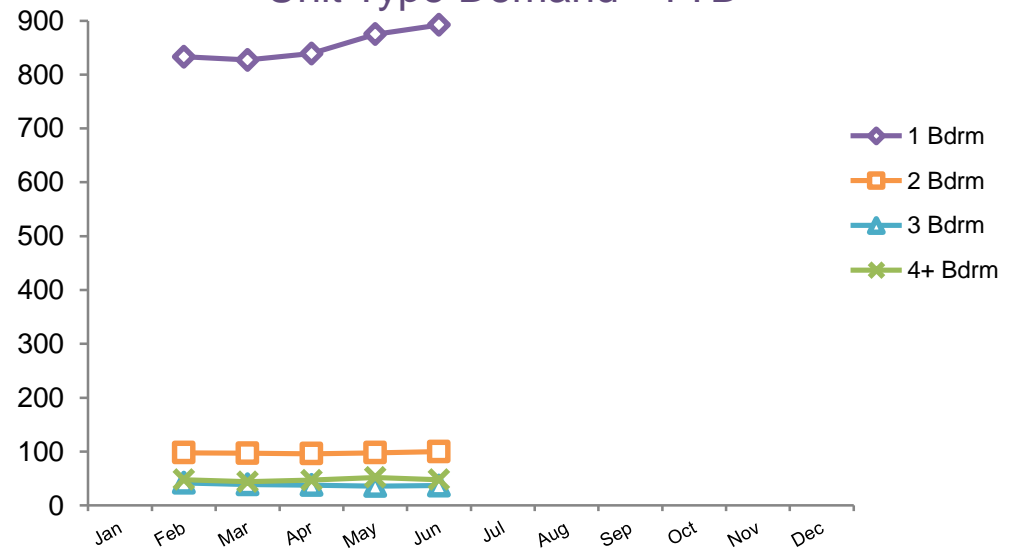
Waitlist Statistics: Housing Status ^{1,2,3,4}



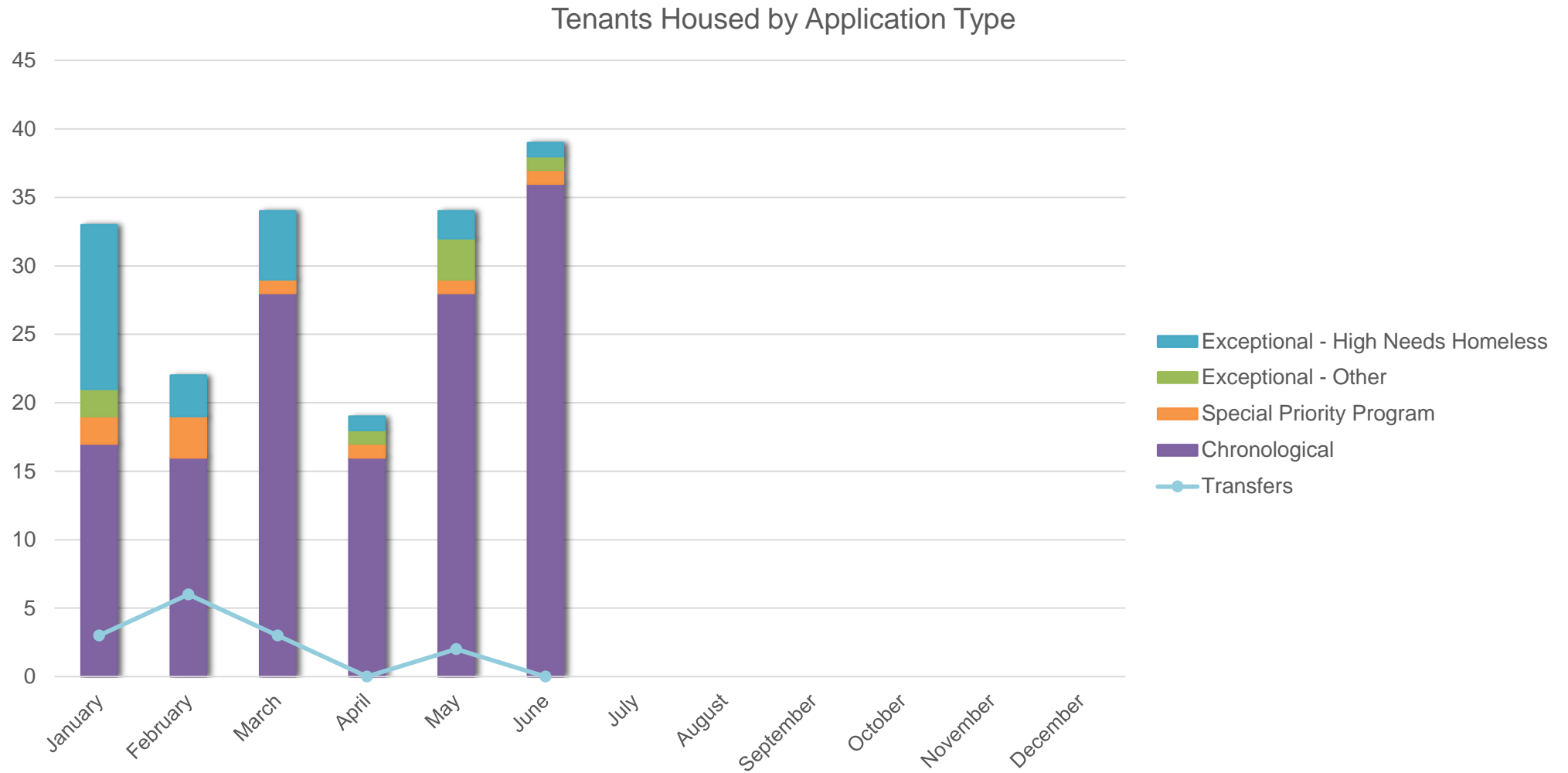
Household Type Demand - YTD



Unit Type Demand - YTD



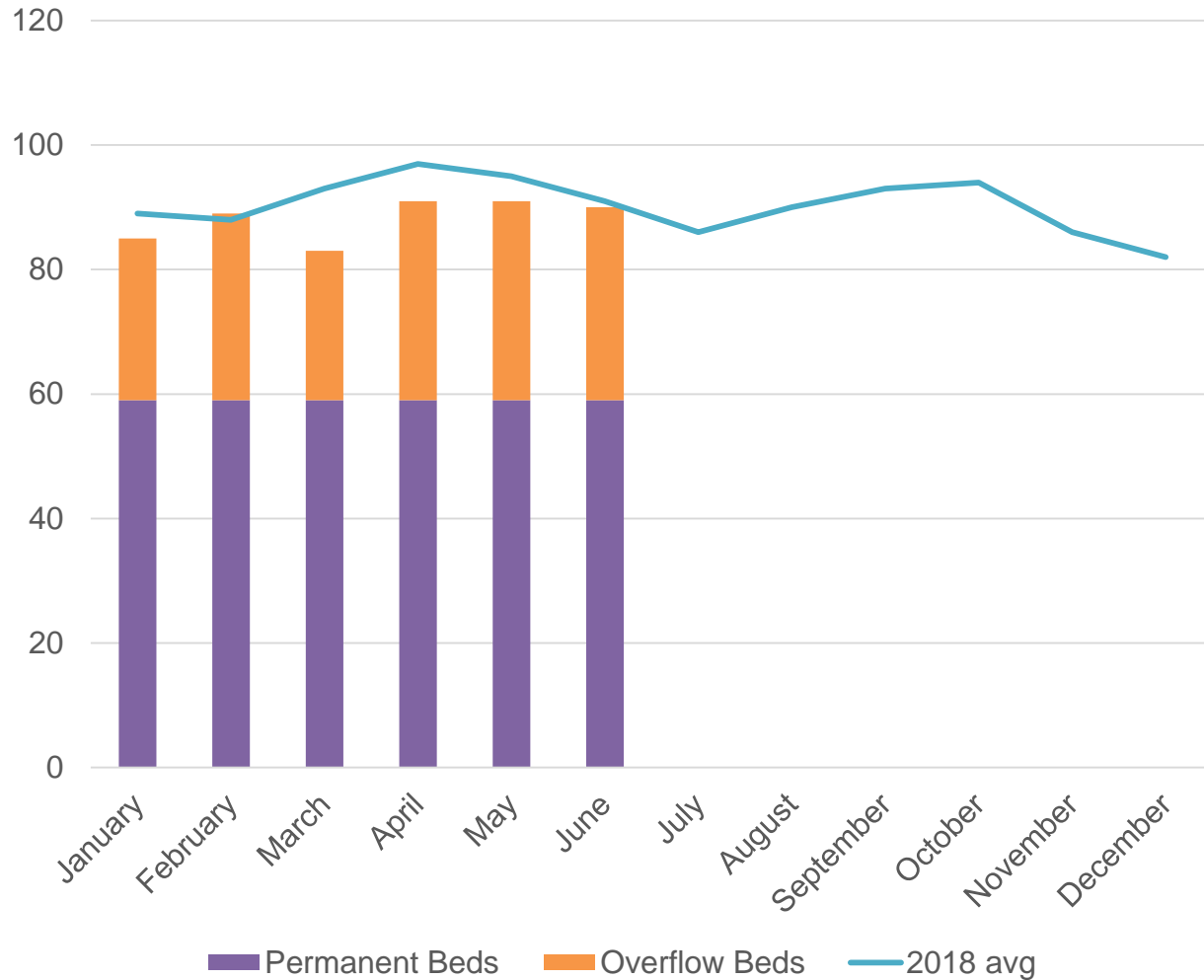
Social Housing: New Tenant Data



Shelter Use and Chronic Homelessness

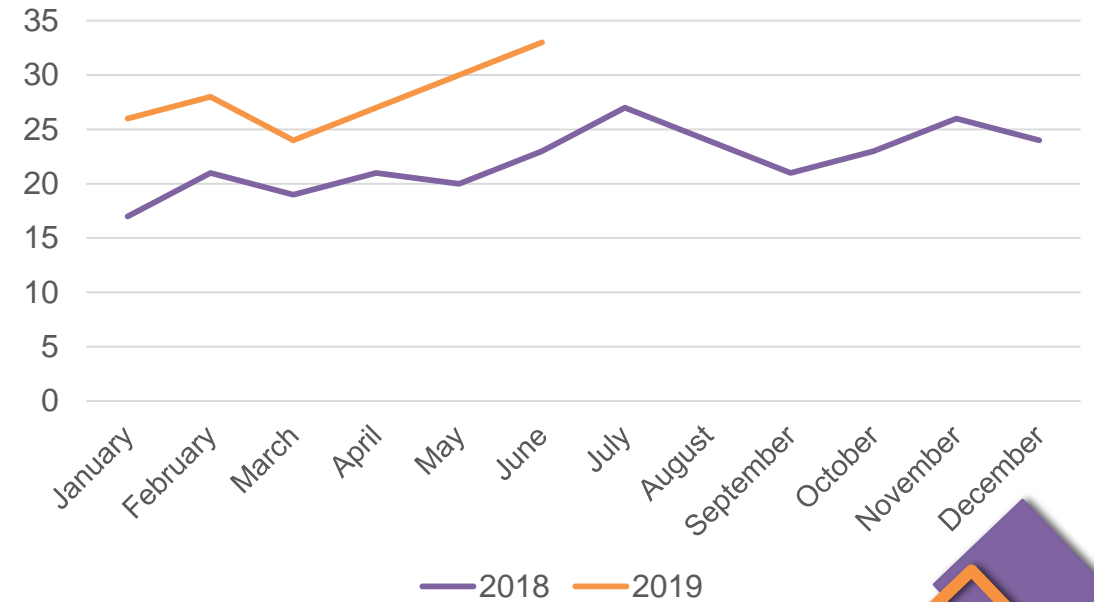
[Back to Table of Contents](#)

Average Daily Shelter Usage - Beds

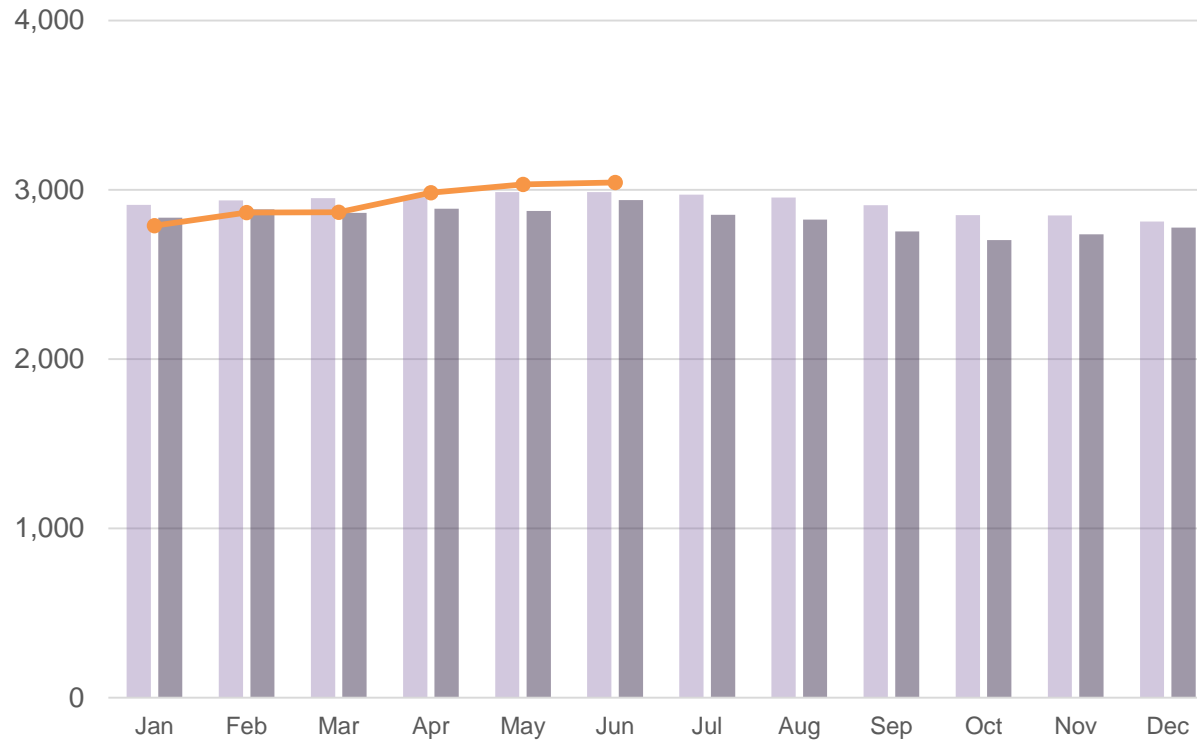


	Q2	Year to Date
Total Housed on Transitional Outreach Support Caseload	6	28
Initial SPDATs Administered	32	69
Follow Up SPDAT assessments	9	12

Number of People Experiencing Chronic Homelessness Using Shelters by Month



OW Caseload ¹



■ 2017
■ 2018
● 2019

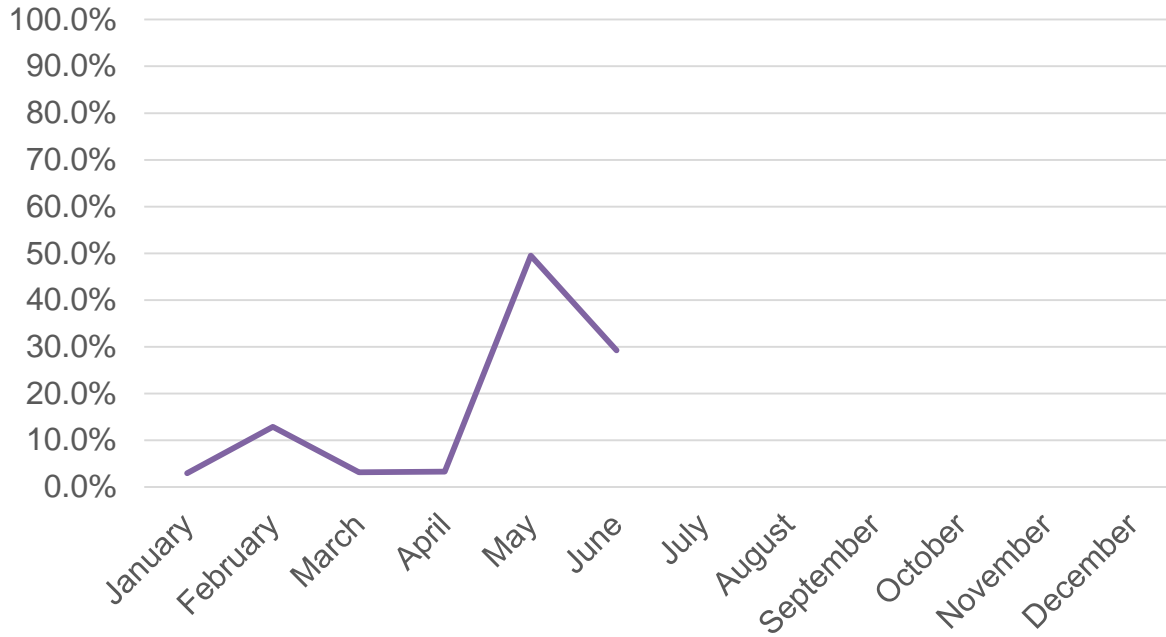
OW Caseload ¹	3,043
--------------------------	--------------

Number of Cases	
Temp Care Cases	224
ODSP Participating	25

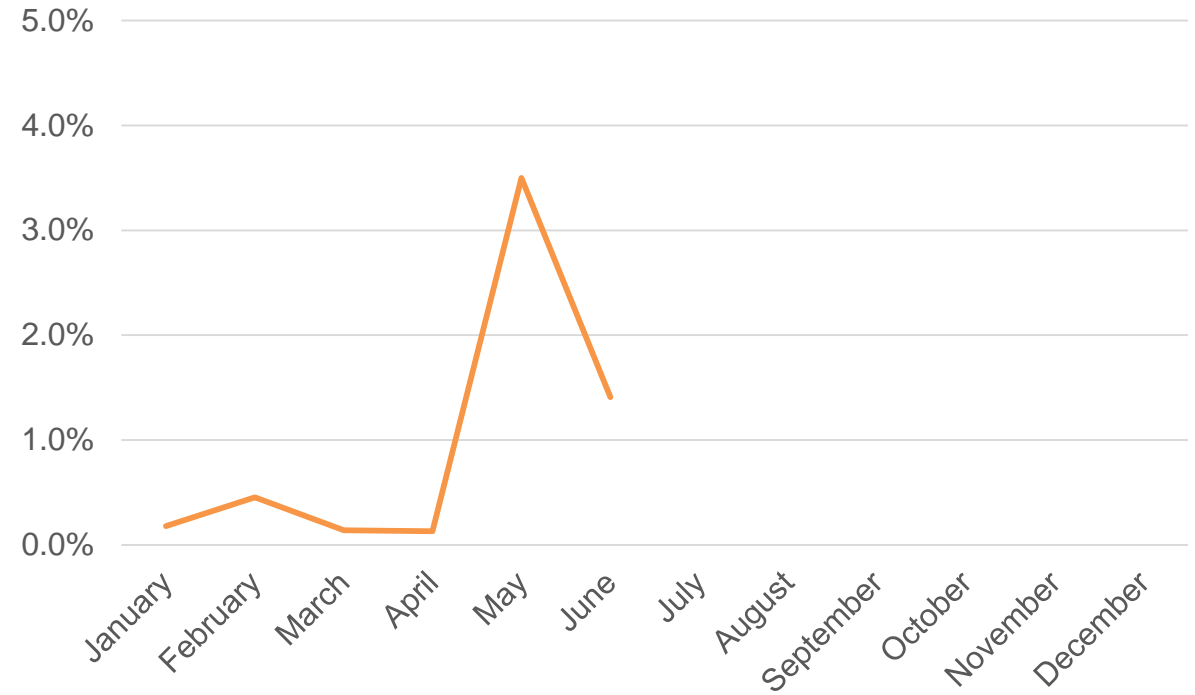


Ontario Works: Employment Assistance Services

Average % of Terminations Exiting to Employment¹



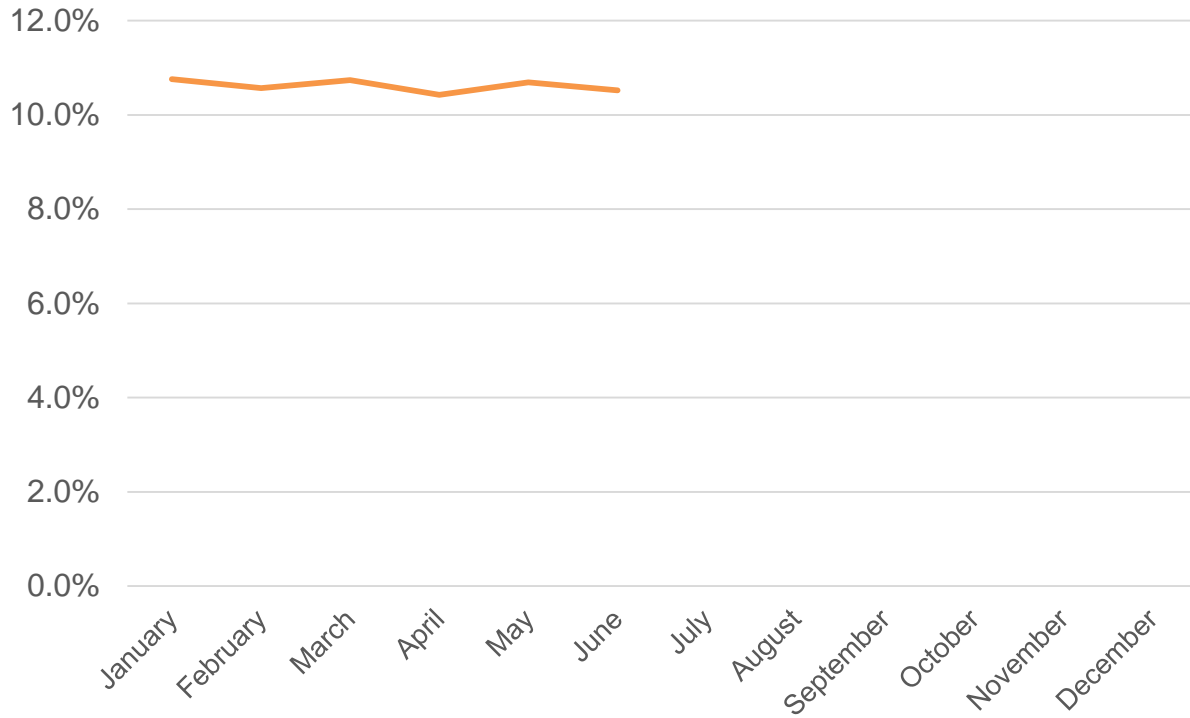
% of Caseload Exiting to Employment



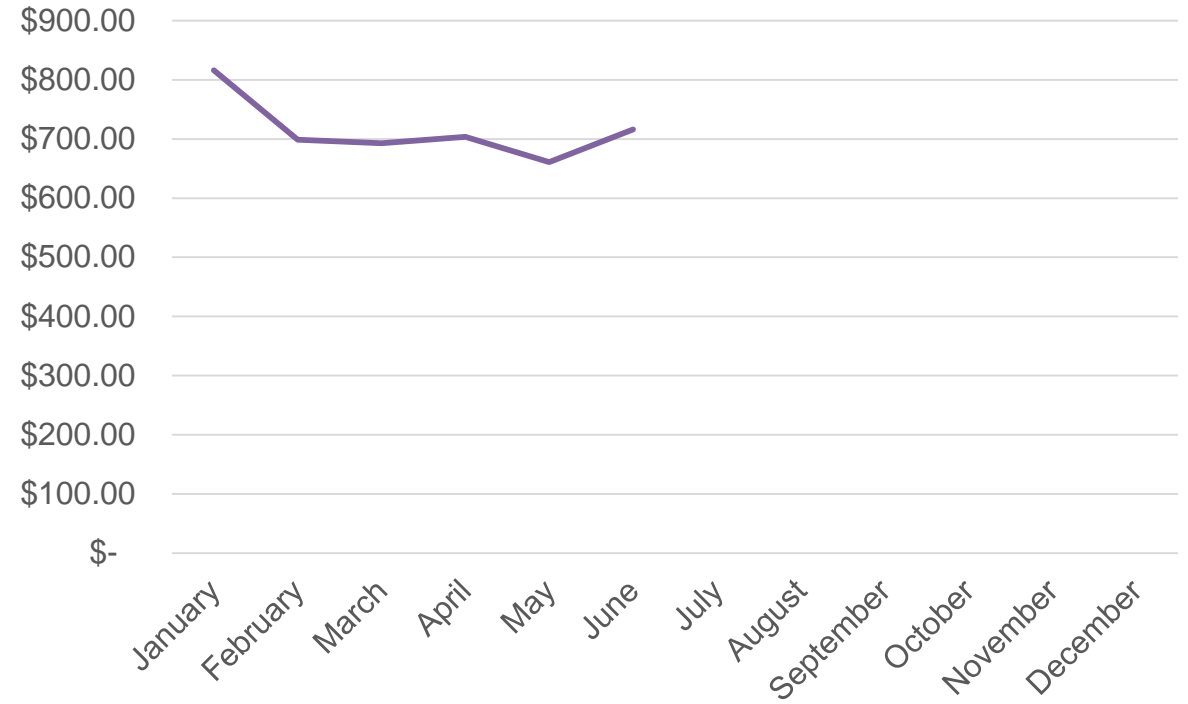
Ontario Works: Employment Assistance Services

[Back to Table of Contents](#)

% of Caseload with Employment Earnings



Average Monthly Employment Earnings per Case

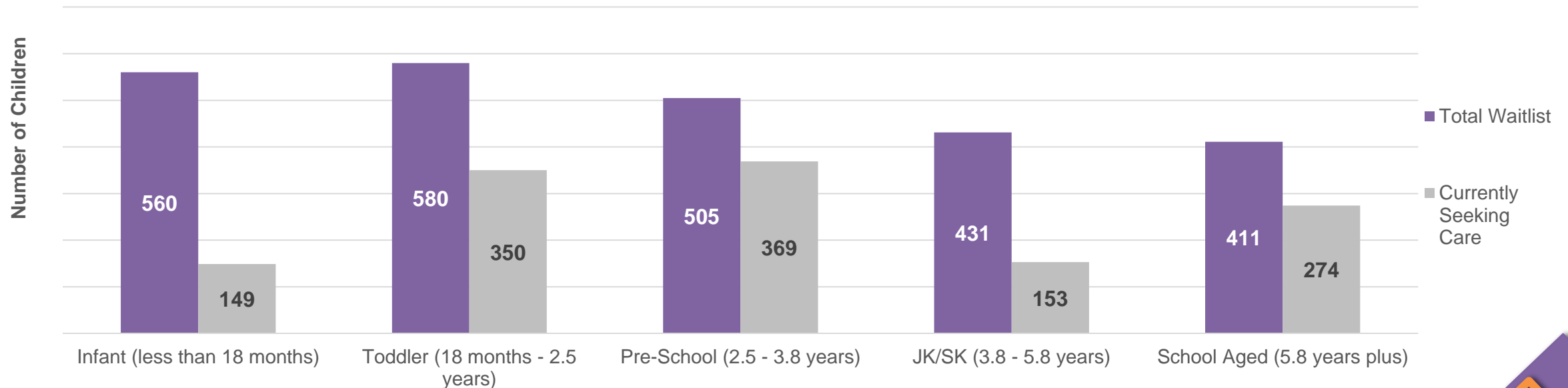


Child Care: Waitlist by Age Category

Number of Families Applying for Fee Subsidy*	1,110	Number of Families for a Full Pay Space	1,377
Number of Families Applying Special Needs Services*	94	Number of Placed Children Q2	272

*Note – applications are subject to eligibility review.

**Total Child Care Waitlist and Children Currently Waiting for Care
(Individual/Unique Children)**



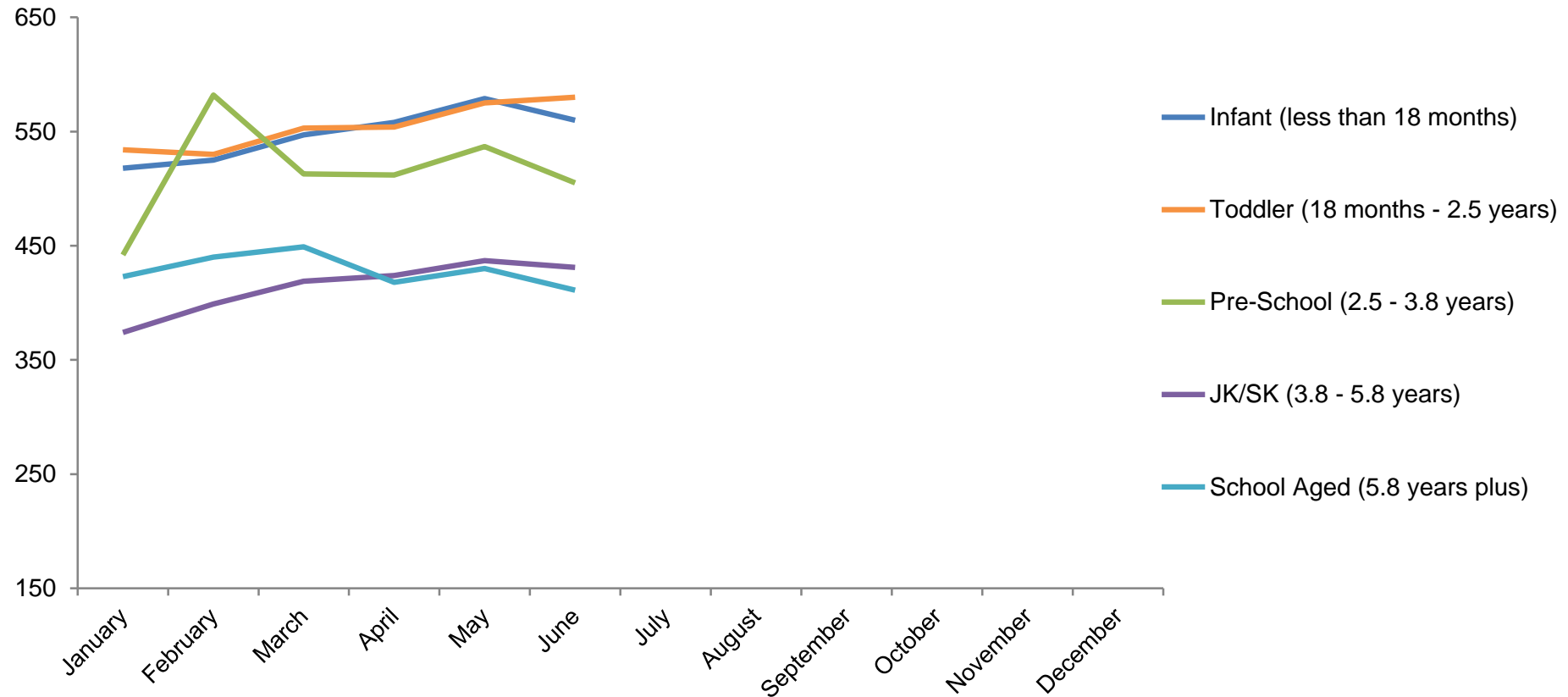
Total Waitlist Q2 2019

2,487

Percent of Waitlist Currently Seeking Care Q2 2019

52.1%

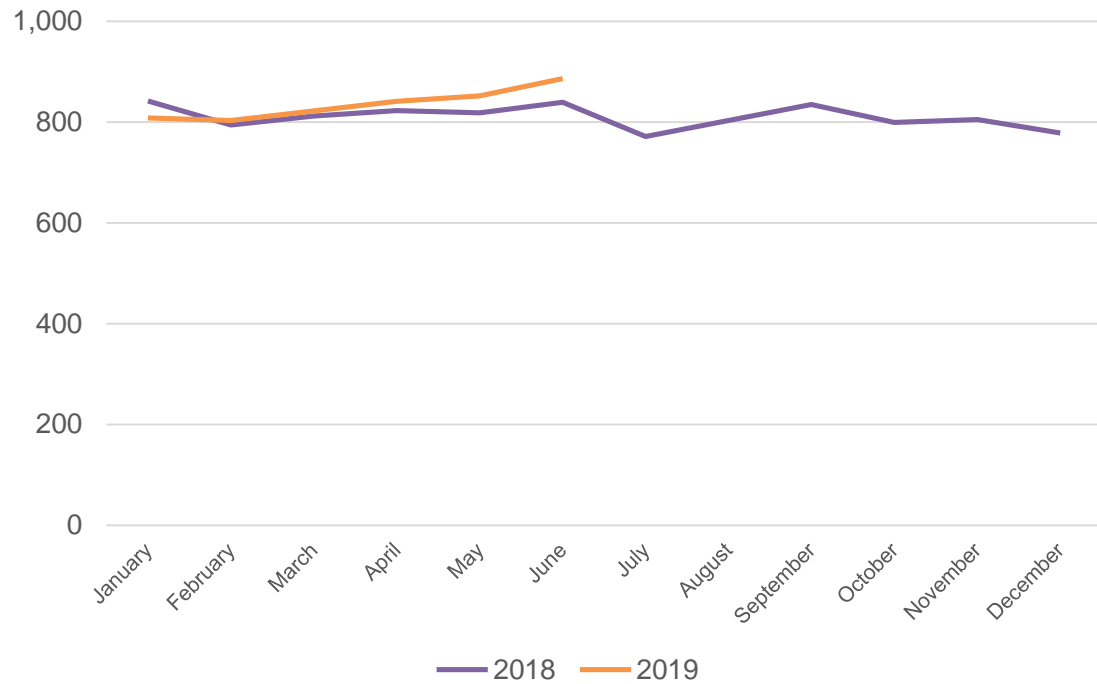
Total Waitlist Trends by Program: 2019



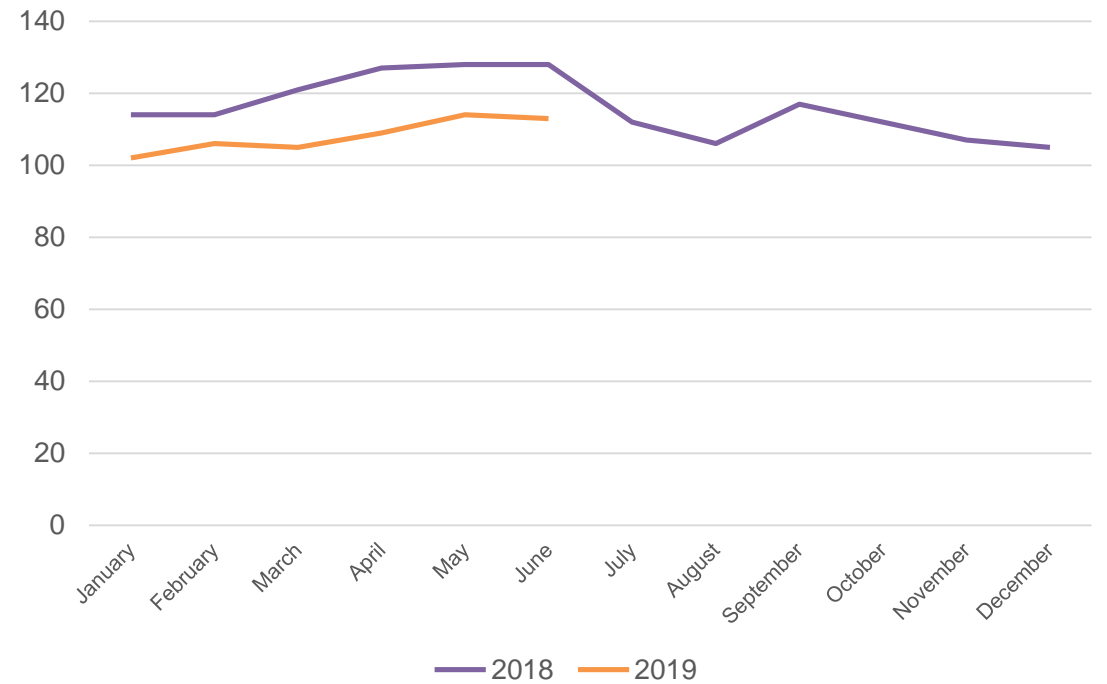
Child Care: Current Usage Statistics

[Back to Table of Contents](#)

Children Receiving Fee Subsidy



Children Receiving Special Needs Resources



Early Years Programs: EarlyON

Children and Parents Who Attended an EarlyON Centre in the District of Thunder Bay

